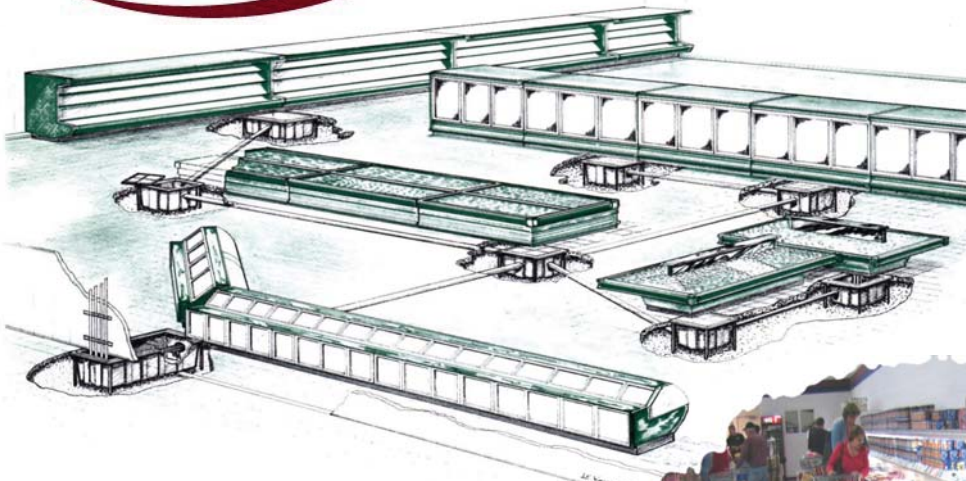
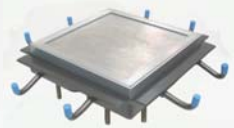




Manufacturers of In-Floor Access Enclosures



Patent 5,412,911



***Time Saving Installations, Convenience, Standardization
For Gaining Access To Under Floor Mechanicals !***



Manufactured In-Floor access enclosures and pit systems for providing access to under-floor:

- Mechanicals
- Water piping and valves
- Drainage hubs and piping
- Electrical wiring and controls
- Refrigeration piping and controls



***In-Floor Access for Grocery, Retail, Manufacturing,
Industrial and Institutional***

***Available for use with our composite liners or your
on-site constructed pit.***

***We can configure a unit to any size and cover
requirements.***

Craig Manufacturing Corp.
Manufacturers of In-Floor Access Enclosures
700 Henry Circle, Sinking Spring, PA 19608

Phone: 610-678-8200 Fax: 610-678-8201
E-mail: craiggmfg@craigg.com
www.CRAIGG.com



Table of Contents

SECTION 1

Technical Data

The ADJUSTOR
Construction Detail
Installation Detail

SECTION 2

Model ADL

The POUROVER
Construction Detail
Installation Detail

SECTION 3

Model POL

ADJUSTOR FRAME
Construction Detail
Installation Detail

SECTION 4

Model ADF

RIGIDCAST
Construction Detail
Installation Detail

SECTION 5

Model RCF

RIGIDCAST TRU SCREED
Construction Detail
Installation Detail

SECTION 6

Model RTS

POUROVER FRAME
Construction Detail
Installation Detail

SECTION 7

Model POF

Bordered Covers
Borderless Covers
Flush Covers
Two Piece Cover
Partial Covers
Cover Supports

SECTION 8

Cover Styles

Two Part Frame Assembly
Combination Adjustor and Pourover Frame & Liner
Angled Adjustor and Pourover Frame & Liner
Double End Adjustor with Pourover Center Frame & Liner
Combination Adjustor ,Pourover and Open Area Frame & Liner
Flush Mounting Unit Frame & Liner
Fixed Cover with Frame & Liner

SECTION 9

Variations

Craig Manufacturing Corp.
Manufacturers of In-Floor Access Enclosures
700 Henry Circle, Sinking Spring, PA 19608

12

Phone: 610-678-8200 Fax: 610-678-8201
E-mail: craiggmfg@craig.com
www.CRAIGG.com



Technical Data

SPECIFICATIONS

ASTM

UPPER: Extruded Aluminum 6105-T5	B221
LOWER: 7 Gauge (0.1793") thick, Low Carbon Steel	A36
GASKET: Shore Type A Cork-Rubber w/ Acrylic PSA	D2240
STUD: 7/16-14 TPI x 4" Lg., Low Carbon Steel w/ Yellow Zinc Grade 2	A307

FRAMES

BORDER FRAME: Extruded Aluminum 6105-T5	B 221
PLATE: 0.25" or 0.375" thick, Aluminum Plate 6061, Temper T651, Mill Finish	B209
ALUMINUM TREAD PLATE: 0.25" or 0.375" thick, 6061, Temper T651	B632
STEEL PLATE: 0.25" Thick, Low Carbon Steel, Hot Rolled	A36
POL/POF METAL DECK: 22 Gauge G60 Galvanized Raised Rib	A653

COVERS

COMPOSITE: Fiber Reinforced Polyester Resin Molded Vertical Support Gussets Color: Gray Weight Density: 1.5 Pounds Per Square Foot (Average) Tensile Strength: PSI 10,000 @ 45% Styrene	D638
--	------

USERS

This data is composite of manufacturers data of raw goods and current industry ratings of such goods.
Craig Mfg. assumes no responsibility for any possible errors in these ratings and believes this data to be correct at this printing.

Craig Manufacturing Corp.
Manufacturers of In-Floor Access Enclosures

12

Phone: 610-678-8200 Fax: 610-678-8201
E-mail: craiggmfg@craig.com
www.CRAIGG.com

Features That Make Us Your First Choice:

- ◆ **Attractively Finished Aluminum Frame Mounted Within A Steel Structural Frame**
- ◆ **Highly Durable Composite Liner That Will Provide A Lifetime Of Service**
- ◆ **Steel Securing Rods That Holds The Unit In Alignment During Installation**



Patent 5.412.911

- ◆ **Adjustability** Allowing Frame & Cover To Compensate For Uneven Floor and Different Floor Covering Material
- ◆ **Vast Selection Of Unit Sizes, Cover Sizes And Cover Styles**

The **ADJUSTOR** is a unitized in-floor pit enclosure that allows access to refrigeration, electrical, plumbing, pumps and many other mechanicals. It's unitized construction provides for a **One Step** installation that's quick and easy, which directly relates to a labor savings. Installers like its workability and ease of handling. If penetrations are required they will not compromise the liner strength.

No special site preparation is needed, just place the unit on a solid substrate base that's free of piercing objects. Securing rods stabilize the unit until backfilled and the concrete floor is poured.

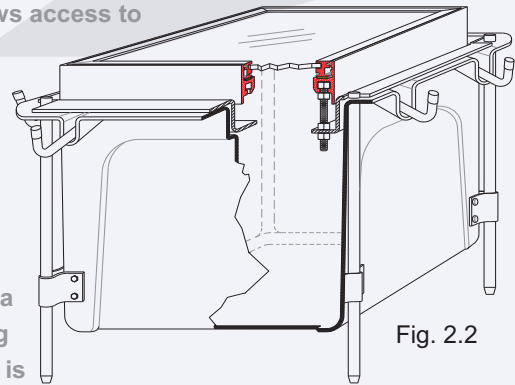


Fig. 2.2

FRAME AND COMPOSITE LINER ASSEMBLY

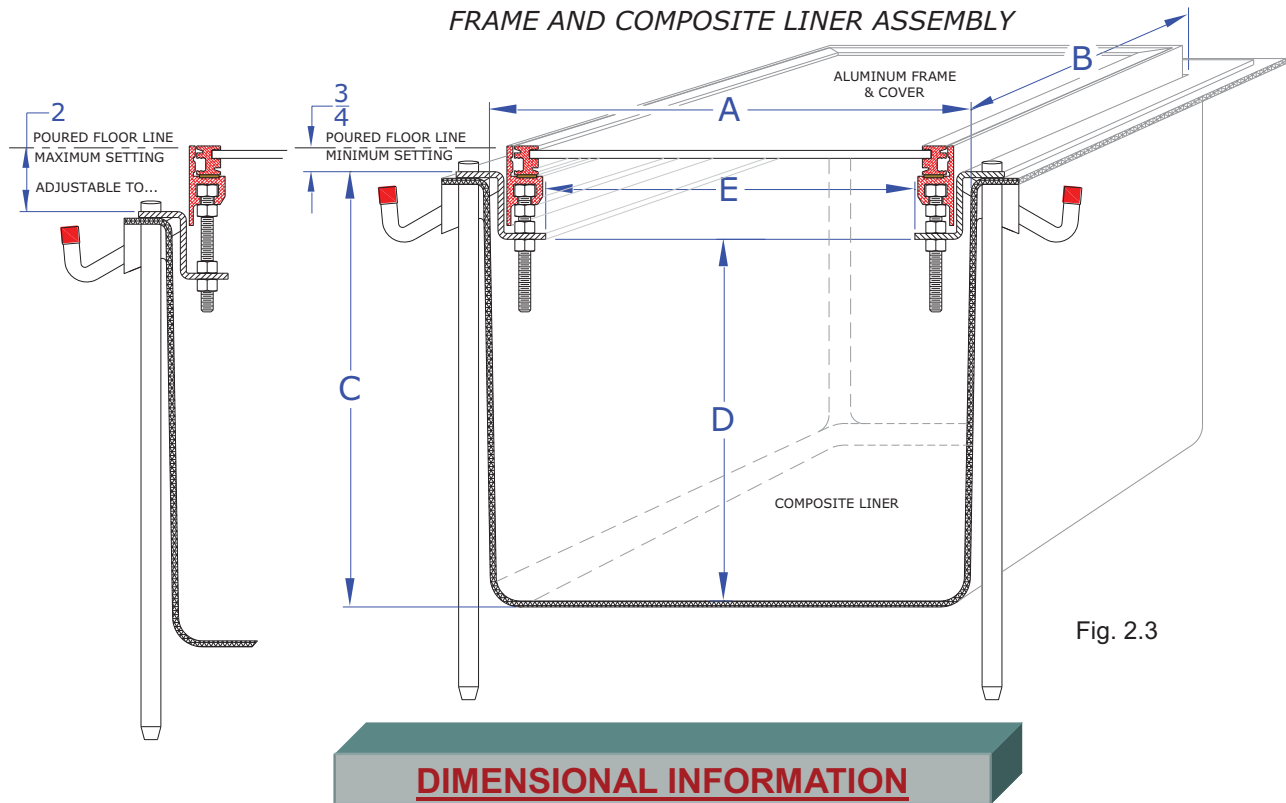


INSTALLATION BEFORE
POURING FLOOR

Fig. 2.1

Positive alignment of the liner is not necessary when setting. The aluminum frame can be adjusted to be fine tuned for uneven floors and flooring materials by raising and leveling to match the surrounding conditions.

Covers can be selected from our numerous variety of sizes, materials, styles and offsets available. Provided in steel or lightweight aluminum and then finished to match any type floor covering .



Liners are offered in an almost unlimited selection of sizes from 12" x 12" x 15" deep to 60" x 60" x 36" deep. Other sizes are available upon special request. Liners are available in six inch increments in any direction.

Oth-

INTERIOR WIDTH OR LENGTH OF COMPOSITE LINER "A" OR "B"																								
NOMINAL SIZE	12"	18"	24"	30"	36"	42"	48"	54"	60"	66"	72"	78"	84"	90"	96"									
ACTUAL SIZE	12-13/16"	18-3/4"	24-7/8"	30-3/4"	36-1 1/16"	42-5/8"	48-9/16"	54-1/2"	60-7/16"	66-3/8"	72-5/16"	78-1/4"	84-3/16"	90-1/8"	96-1/16"									
OVERALL DEPTH OF COMPOSITE LINER - "C"															DIMENSIONS MAY VARY DUE TO MOLD CONFIGURATION.									
	13"	* 15"	18"	24"	30"	36"	* 12" x 12" IS ONLY AVAILABLE IN 15" DEPTH.																	
USEABLE DEPTH OF COMPOSITE LINER - "D"																								
	10-3/4"	* 12-3/4"	15-3/4"	21-3/4"	27-3/4"	33-3/4"	THE ALUMINUM FRAME HAS AN ADJUSTMENT RANGE OF 2" TO ALLOW FOR SETTING VARIABLES, UNEVENLY POURED FLOORS AND FLOOR COVERING MATERIALS.																	
ACTUAL OPENING OF FRAMEWORK - "E" - IS 3-1/2" LESS THAN ACTUAL SIZE OF WIDTH OR LENGTH																								

Installation can be accomplished in several ways. The preferred way takes advantage of ADL's adjusting feature.

Place and level the unit with the top edge of the finished aluminum frame even with the proposed final poured floor. This allows for concrete finishers to produce a clean and level floor around the unit's frame. After the concrete cures, evenly turn the adjusters on the underside of the frame to raise it out of the concrete to a level that matches your choice of flooring material.

An alternative method is to level the frame's top edge to its final elevation, including the flooring material. Pour and finish the concrete to a level allowing for the flooring material.

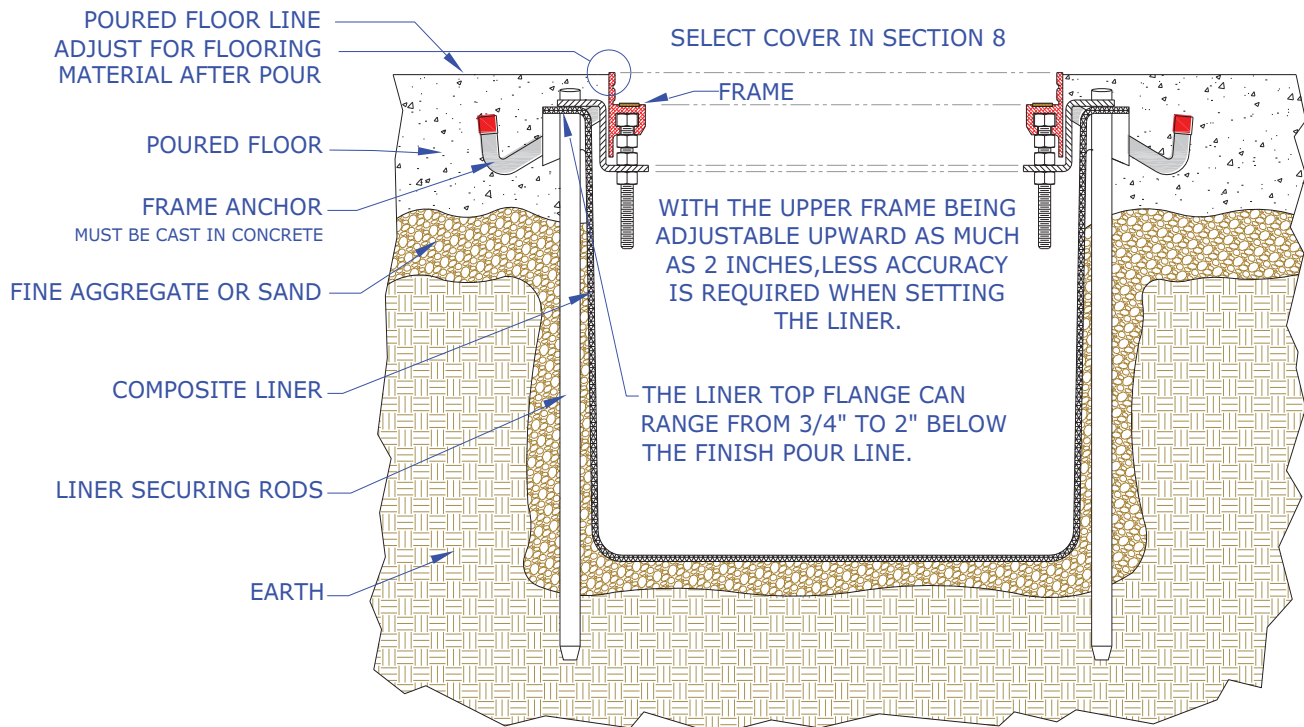


Fig. 2.4

Features That Make Us Your First Choice:

- ◆ **Steel Structural Frame** with Supporting Concrete Anchors
- ◆ **Highly Durable Composite Liner** That Will Provide A Lifetime Of Service
- ◆ **Steel Securing Rods** That Holds The Unit In Alignment During Installation



- ◆ **Wood Pour Stop** Included for Concrete Finishing Convenience
- ◆ **Vast Selection** Of Unit Sizes
- ◆ **Optional Ribbed Steel** to Support Poured Cover or a Non-Load Bearing Removable Closeoff

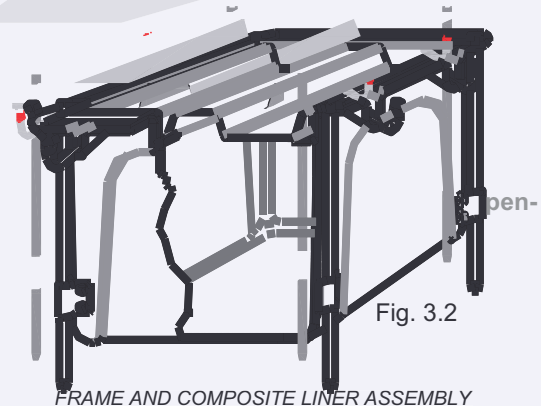
The **Pourover** is a unitized in-floor pit enclosure that allows access to refrigeration, electrical, plumbing, pump and many other mechanicals. Its unitized construction provides for a **One Step** installation that's fast and easy, reducing your labor cost. Installers like its workability and ease of handling. Cutting operations will not compromise the liner strength.

No special site preparation is needed, just place the unit on a solid substrate base that's free of piercing objects. Securing rods stabilize the unit until backfilled and the concrete floor is poured.

The provided **wood pourstop** creates a concrete stop to prevent wet concrete from entering the unit. The provided blocking is designed to allow for a 4" poured cap if it is to be used. The pourstop has been designed with a 10 degree taper, this helps avoid settlement of the cap at a future time.

Model POL combines the frame and liner assembly that can, with the use of a ribbed steel cover, create a completely hidden unit. After all necessary work has been performed in the unit, a concrete cap is poured over the opening forming a non-accessible enclosure. Unit can also be left accessible through a non-load bearing galvanized steel closeoff.

Covers available are 22 gauge galvanized ribbed decking , (concrete pour), and 20 gauge galvanized steel closeoff.



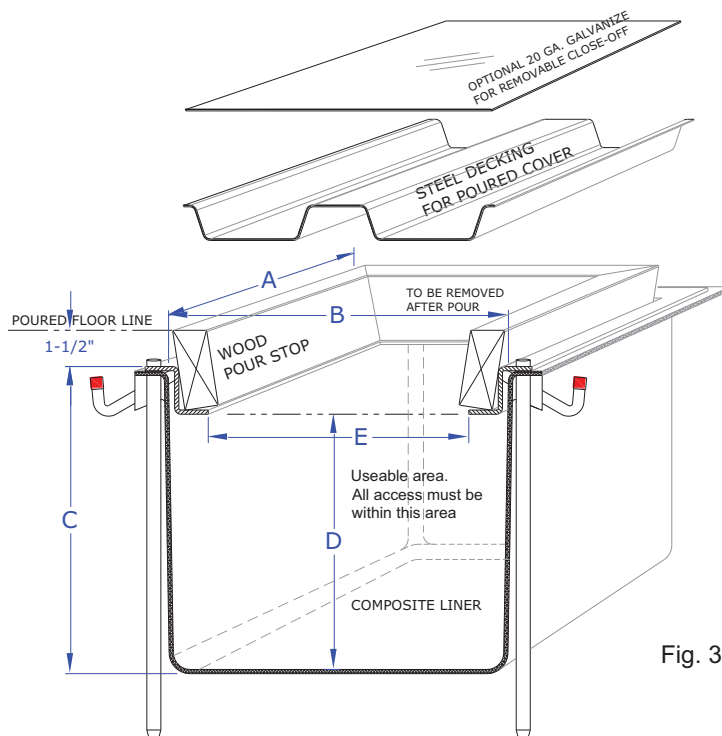


Fig. 3.3

DIMENSIONAL INFORMATION

Liners are offered in an almost unlimited selection of sizes from 12" x 12" x 15" deep to 60" x 60" x 36" deep. Other sizes are available upon special request. Liners are available in six inch increments in any direction.

Oth-

INTERIOR WIDTH OR LENGTH OF COMPOSITE LINER "A" OR "B"																													
NOMINAL SIZE	12"	18"	24"	30"	36"	42"	48"	54"	60"	66"	72"	78"	84"	90"															
ACTUAL SIZE	12-13/16"	18-3/4"	24-7/8"	30-3/4"	36-11/16"	42-5/8"	48-9/16"	54-1/2"	60-7/16"	66-3/8"	72-5/16"	78-1/4"	84-3/16"	90-1/8"															
OVERALL DEPTH OF COMPOSITE LINER - "C"															DIMENSIONS MAY VARY DUE TO MOLD CONFIGURATION.														
	13"	* 15"	18"	24"	30"	36"																							
USEABLE DEPTH OF COMPOSITE LINER - "D"																													
	10-3/4"	* 12-3/4"	15-3/4"	21-3/4"	27-3/4"	33-3/4"									* 12" x 12" IS ONLY AVAILABLE IN 15" DEPTH.														
ACTUAL OPENING OF FRAMEWORK - "E" - IS 3-1/2" LESS THAN ACTUAL SIZE OF WIDTH OR LENGTH																													

Installation Detail

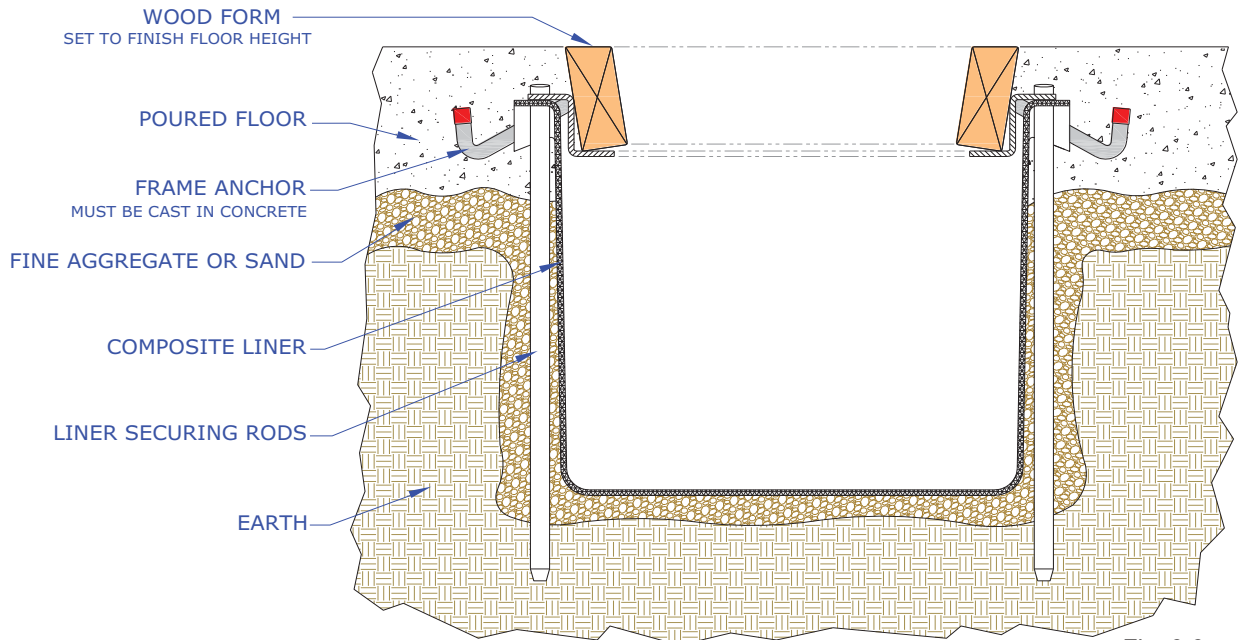


Fig. 3.3

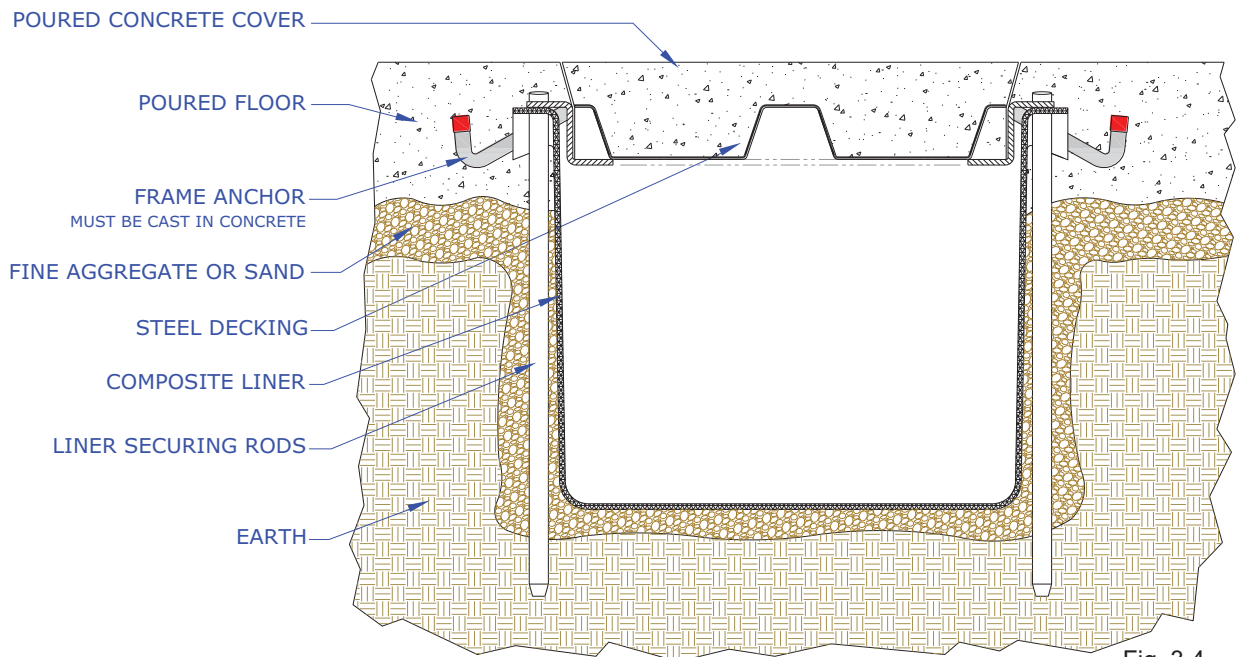
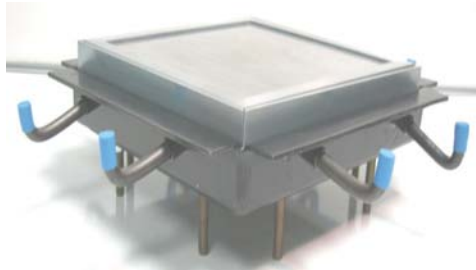


Fig. 3.4

Features That Make Us Your First Choice:

- ◆ **Attractively Finished Aluminum Frame Mounted Within A Steel Structural Frame**
- ◆ **Structural Steel Base Frame with Anchors for Casting Directly into Floor**
- ◆ **Full Perimeter Sealing Gasket**



- ◆ **Vast Selection** of Cover Designs, Sizes, Material
- ◆ **Adjustability** Allowing Frame & Cover To Compensate For Uneven Floor and Different Floor Covering Material

ADJUSTABLE ASSEMBLY TO BE USED WITH ON-SITE CONSTRUCTED PITS

The **Adjustor Frame** and cover assembly is designed to be mounted on top of a field designed and built pit. It has all the adjustability features as our Model ADL that's would mount in our composite liner. The structural steel frame with its anchors, rests on top of the field constructed pit walls and will cast directly into the poured floor. It is the ideal frame assembly to be utilized with field designed and built enclosures allowing access to refrigeration, electrical, plumbing, pump and many other mechanicals.

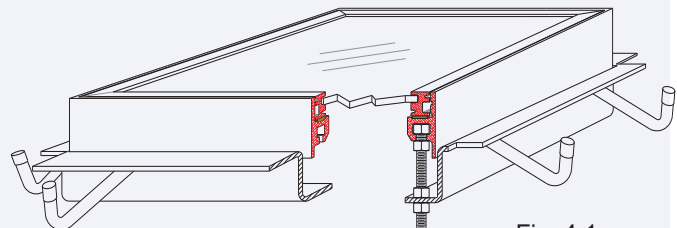


Fig. 4.1

FRAME ASSEMBLY

Positive alignment of the frame is not necessary when setting. The aluminum frame can be fine tuned later for levelness and floor cover matching by raising and leveling the exposed frame to match surrounding conditions.

Covers can be selected from the numerous variety of sizes, materials, styles and offsets. Available in steel or lightweight aluminum and then finished to match any type floor covering .

**ADJUSTABLE ASSEMBLY TO BE USED WITH
ON-SITE CONSTRUCTED PITS**

**FRAME & COVER
Construction Detail**

AT MINIMUM ADJUSTMENT

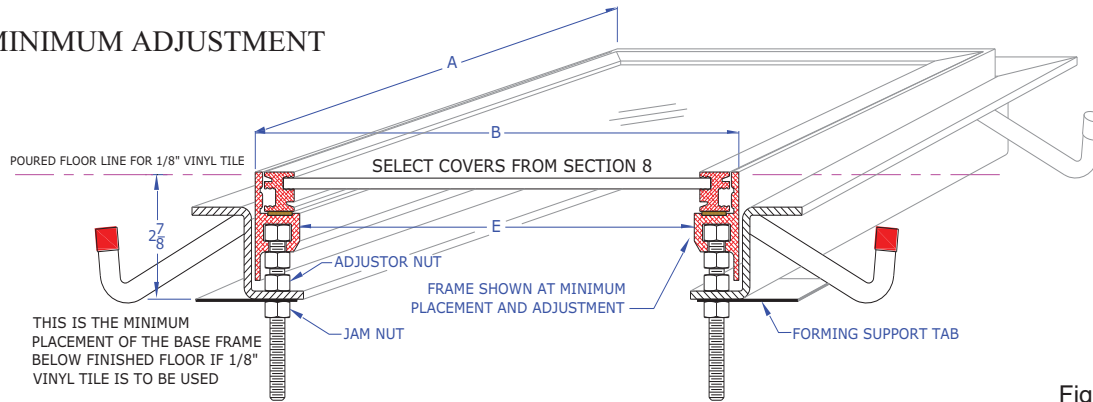


Fig. 4.2

AT MAXIMUM ADJUSTMENT

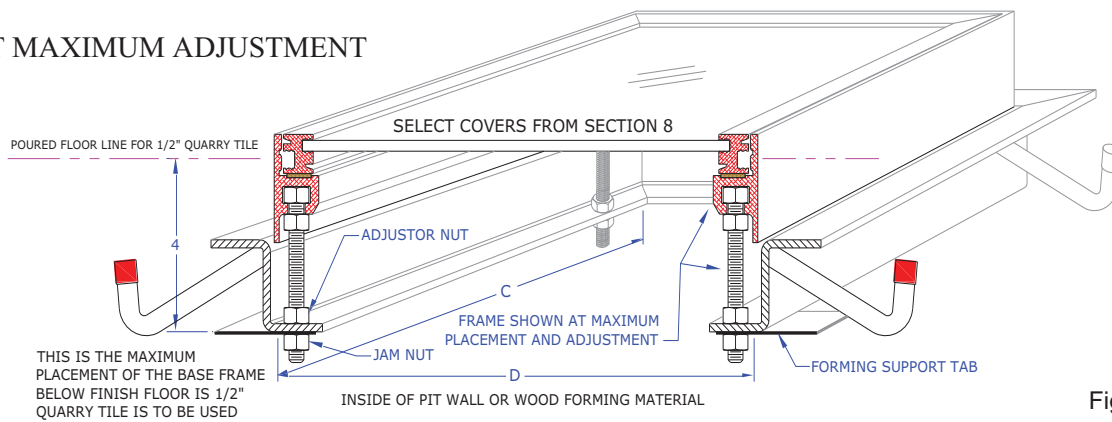


Fig. 4.3

DIMENSIONAL INFORMATION

WIDTH OR LENGTH OF ALUMINUM FRAME "A" OR "B"															
NOMINAL SIZE	12"	18"	24"	30"	36"	42"	48"	54"	60"	66"	72"	78"	84"	90"	96"
ACTUAL SIZE	11-7/8"	17-13/16"	23-3/4"	29-11/16"	35-5/8"	41-9/16"	47-1/2"	53-7/16"	59-3/8"	65-5/16"	71-1/4"	77-3/16"	83-1/8"	89-1/16"	95"
WIDTH OR LENGTH OF INSIDE WALL OF FIELD FORMED PIT- "C" OR "D"															
	10"	15-15/16"	21-7/8"	27-13/16"	33-3/4"	39-11/16"	47-5/8"	51-9/16"	57-1/2"	63-7/16"	69-3/8"	75-5/16"	81-1/4"	87-3/16"	93-1/8"
ACTUAL OPENING OF FRAMEWORK - "E" - IS 2-1/2" LESS THAN ACTUAL SIZE OF WIDTH OR LENGTH															

Manufactured sizes shown. Custom sizes also available.

Craigg Manufacturing Corp.
Manufacturers of In-Floor Access Enclosures

Phone: 610-678-8200 Fax: 610-678-8201
E-mail: craiggmfg@craigg.com
www.CRAIGG.com

Installation Detail

ADJUSTABLE ASSEMBLY TO BE USED WITH ON-SITE CONSTRUCTED PITS

Formed Monolithic

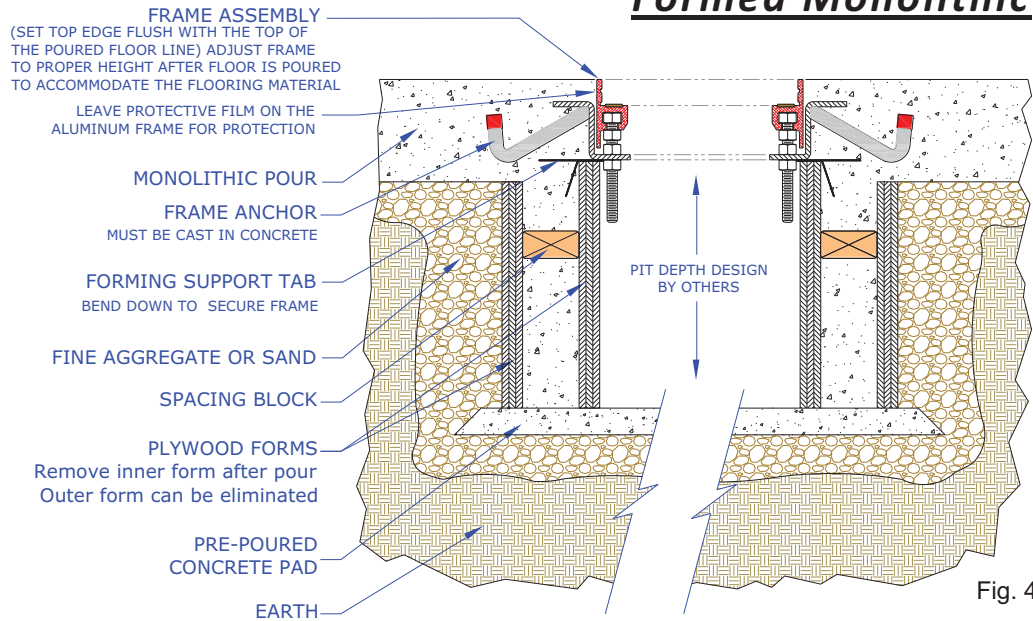


Fig. 4.4

Concrete Block Pit

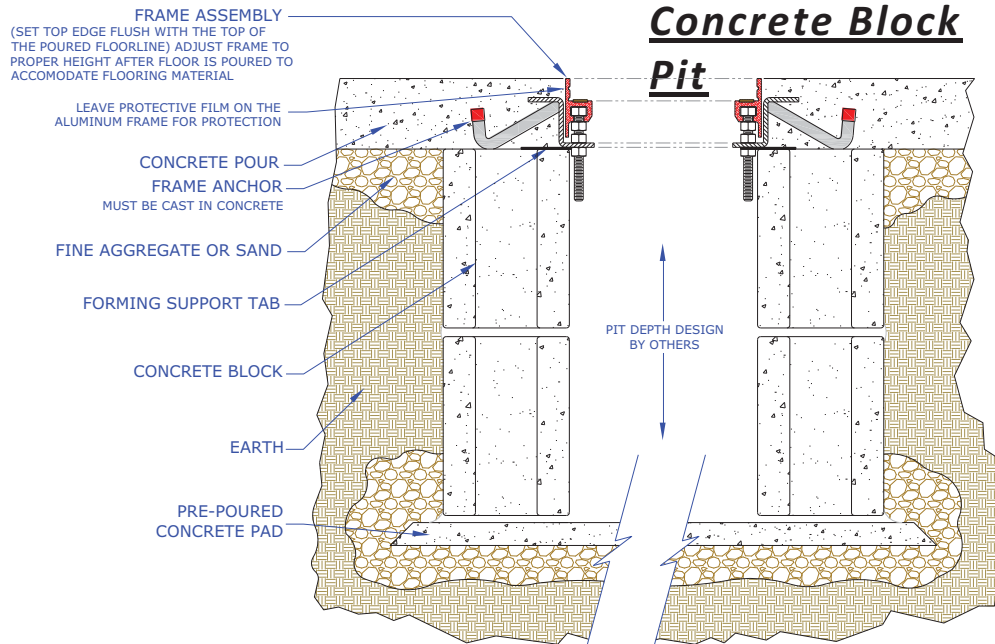


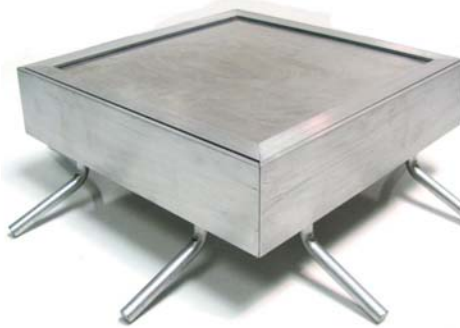
Fig. 4.5



RIGID FRAME ASSEMBLY TO BE USED WITH ON-SITE CONSTRUCTED PITS

Features That Make Us Your First Choice:

- ◆ **Attractively Finished Aluminum** frame with in-fitting cover choices
- ◆ **Securing Anchors** that secures frame firmly in the concrete floor pour
- ◆ **Full Perimeter Sealing Gasket**



- ◆ **Fastener Free Cover** rest in to the deep setting frame channel eliminating the need for mechanical fasteners
- ◆ **Vast Selection** of Cover Designs, Sizes, Material Substrates

CASTS DIRECTLY INTO THE POURED CONCRETE FLOOR

The **RigidCast Frame** and cover is a straight forward designed frame that casts directly into a poured floor or can be utilized with field designed and built enclosures. It is the ideal unit to allow access to refrigeration, electrical, plumbing, pump and many other mechanicals. Choose this unit when a straight forward approach is needed.

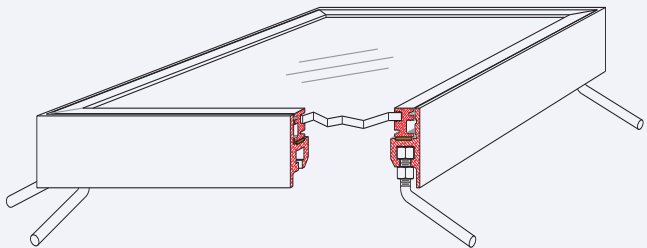


Fig. 5.1

FRAME ASSEMBLY

Its unitized construction provides for a **One Step** installation that's fast and easy. Securing anchors provides support to the frame for a more secure cover loading. The aluminum finish will prove to be attractive and maintenance free for years ahead.

Covers can be selected from the numerous variety of sizes, materials, styles and offsets. Available in steel or lightweight aluminum and then finished to match any type floor covering.

Craig Manufacturing Corp.
Manufacturers of In-Floor Access Enclosures

12

Phone: 610-678-8200 Fax: 610-678-8201
E-mail: craiggmfg@craig.com
www.CRAIGG.com

**RIGID FRAME ASSEMBLY TO BE USED WITH
ON-SITE CONSTRUCTED PITS**

**CASTS DIRECTLY INTO THE POURED
CONCRETE FLOOR**

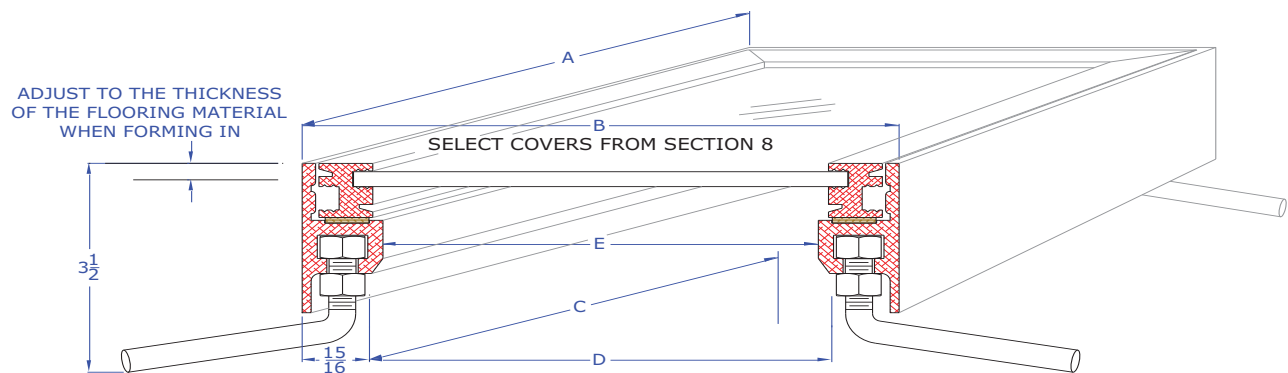


Fig. 5.2

DIMENSIONAL INFORMATION

WIDTH OR LENGTH OF ALUMINUM FRAME "A" OR "B"															
NOMINAL SIZE	12"	18"	24"	30"	36"	42"	48"	54"	60"	66"	72"	78"	84"	90"	96"
ACTUAL SIZE	11-7/8"	17-13/16"	23-3/4"	29-11/16"	35-5/8"	41-9/16"	47-1/2"	53-7/16"	59-3/8"	65-5/16"	71-1/4"	77-3/16"	83-1/8"	89-1/16"	95"
WIDTH OR LENGTH OF INSIDE WALL OF FIELD FORMED PIT- "C" OR "D"															
	10"	15-15/16"	21-7/8"	27-13/16"	33-3/4"	39-11/16"	47-5/8"	51-9/16"	57-1/2"	63-7/16"	69-3/8"	75-5/16"	81-1/4"	87-3/16"	93-1/8"
ACTUAL OPENING OF FRAMEWORK - "E" - IS 2-1/2" LESS THAN ACTUAL SIZE OF WIDTH OR LENGTH															

Manufactured sizes shown. Custom sizes also available.

Craigg Manufacturing Corp.
Manufacturers of In-Floor Access Enclosures

Phone: 610-678-8200 Fax: 610-678-8201
E-mail: craiggmfg@craigg.com
www.CRAIGG.com

RIGID FRAME ASSEMBLY TO BE USED WITH ON-SITE CONSTRUCTED PITS

**FRAME & COVER
INSTALLATION DETAIL**

Formed Monolithic

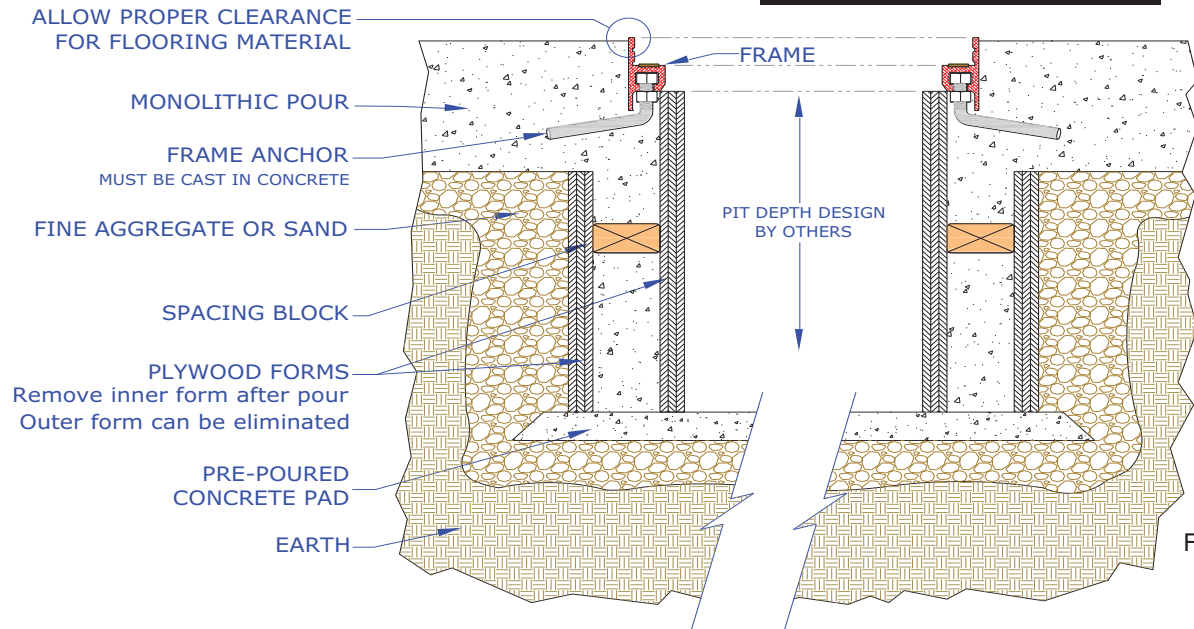


Fig. 5.3

Concrete Block

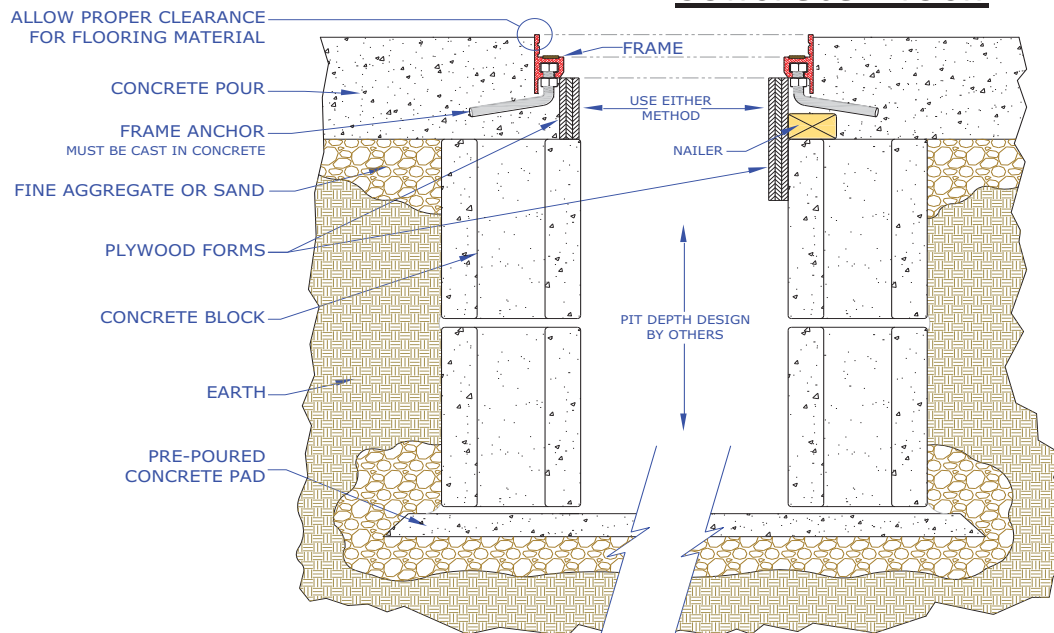


Fig. 5.4



Model RTS

RIGIDCAST TRU SCREED

FRAME & COVER

RIGID FRAME ASSEMBLY TO BE USED WITH ON-SITE CONSTRUCTED PITS

Features That Make Us Your First Choice:

- ◆ **Attractively Finished Aluminum** frame with in-fitting cover choices
- ◆ **Securing Anchors** that secure frame firmly in the concrete floor
- ◆ **Full Perimeter Sealing Gasket**



- ◆ **Attached Flange** around the perimeter provides a screed guide for a perfectly level finished edge.
- ◆ **Vast Selection** of Cover Designs, Sizes, Material

CASTS DIRECTLY INTO THE CONCRETE POUR

The **RigidCast TruScreed Frame** and cover is a straight forward designed frame with the added feature of a finishing guide around its perimeter. The unit casts directly into a poured floor or can be utilized with field designed and built enclosures. It is the ideal unit allowing access to refrigeration, electrical, plumbing, pump and many other mechanicals. To help eliminate the problem of finishing floors evenly around floor frames we built the needed flooring material thickness into a finishing guide angle. When you order the unit with the required offset we provide a perfect edge for concrete finishing.

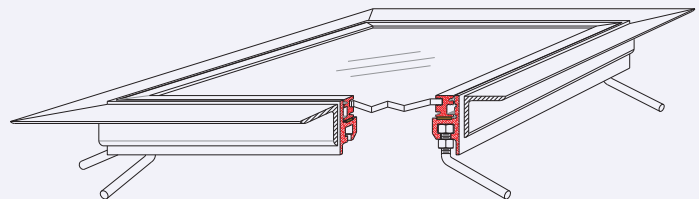


Fig. 6.1

Covers can be selected from the numerous variety of sizes, materials, styles and offsets. Available in steel or lightweight aluminum and then finished to match any type floor covering .

Craig Manufacturing Corp.
Manufacturers of In-Floor Access Enclosures

12

Phone: 610-678-8200 Fax: 610-678-8201
E-mail: craiggmfg@craig.com
www.CRAIGG.com

RIGIDCAST TRU SCREED

**RIGID FRAME ASSEMBLY TO BE USED WITH
ON-SITE CONSTRUCTED PITS**

**FRAME & COVER
Construction Detail**

**CASTS DIRECTLY INTO THE POURED
CONCRETE FLOOR**

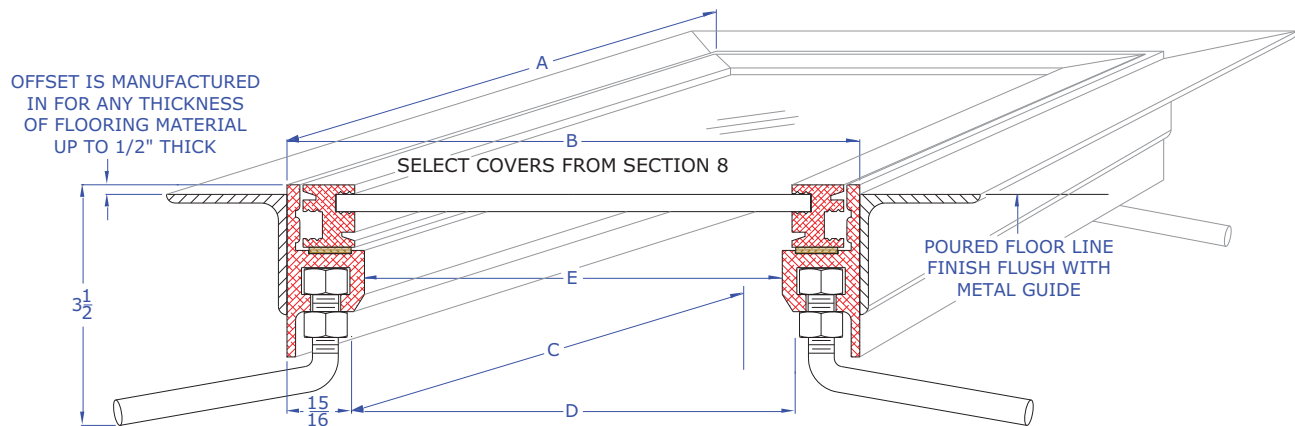


Fig. 6.2

DIMENSIONAL INFORMATION

WIDTH OR LENGTH OF ALUMINUM FRAME "A" OR "B"															
NOMINAL SIZE	12"	18"	24"	30"	36"	42"	48"	54"	60"	66"	72"	78"	84"	90"	96"
ACTUAL SIZE	11-7/8"	17-13/16"	23-3/4"	29-11/16"	35-5/8"	41-9/16"	47-1/2"	53-7/16"	59-3/8"	65-5/16"	71-1/4"	77-3/16"	83-1/8"	89-1/16"	95"
WIDTH OR LENGTH OF INSIDE WALL OF FIELD FORMED PIT- "C" OR "D"															
	10"	15-15/16"	21-7/8"	27-13/16"	33-3/4"	39-11/16"	47-5/8"	51-9/16"	57-1/2"	63-7/16"	69-3/8"	75-5/16"	81-1/4"	87-3/16"	93-1/8"
ACTUAL OPENING OF FRAMEWORK - "E" - IS 2-1/2" LESS THAN ACTUAL SIZE OF WIDTH OR LENGTH															

Manufactured sizes shown. Custom sizes also available.

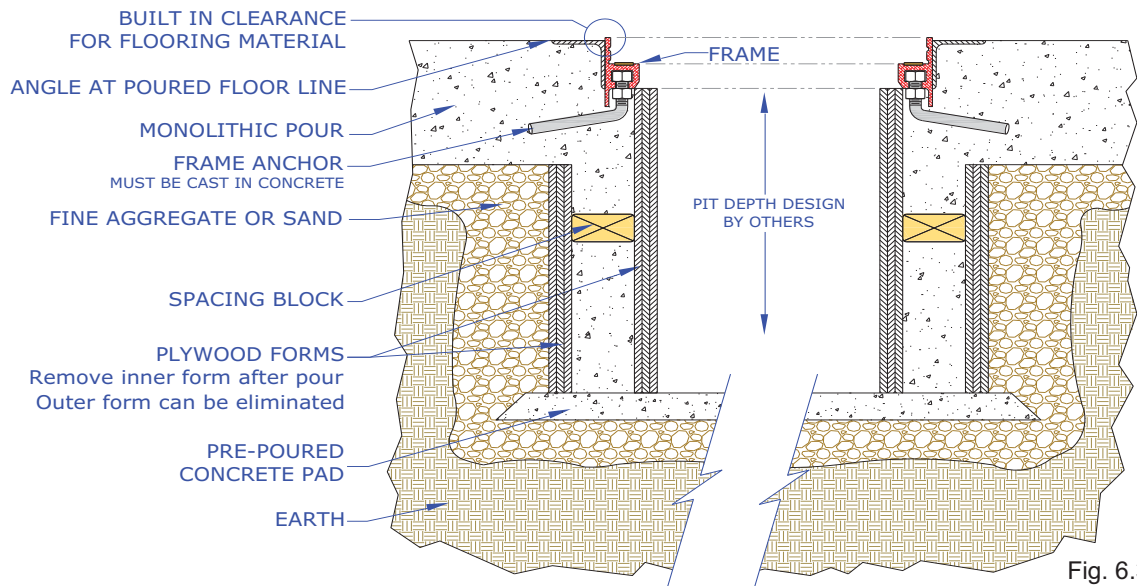
Craigg Manufacturing Corp.
Manufacturers of In-Floor Access Enclosures

Phone: 610-678-8200 Fax: 610-678-8201
E-mail: craiggmfg@craigg.com
www.CRAIGG.com

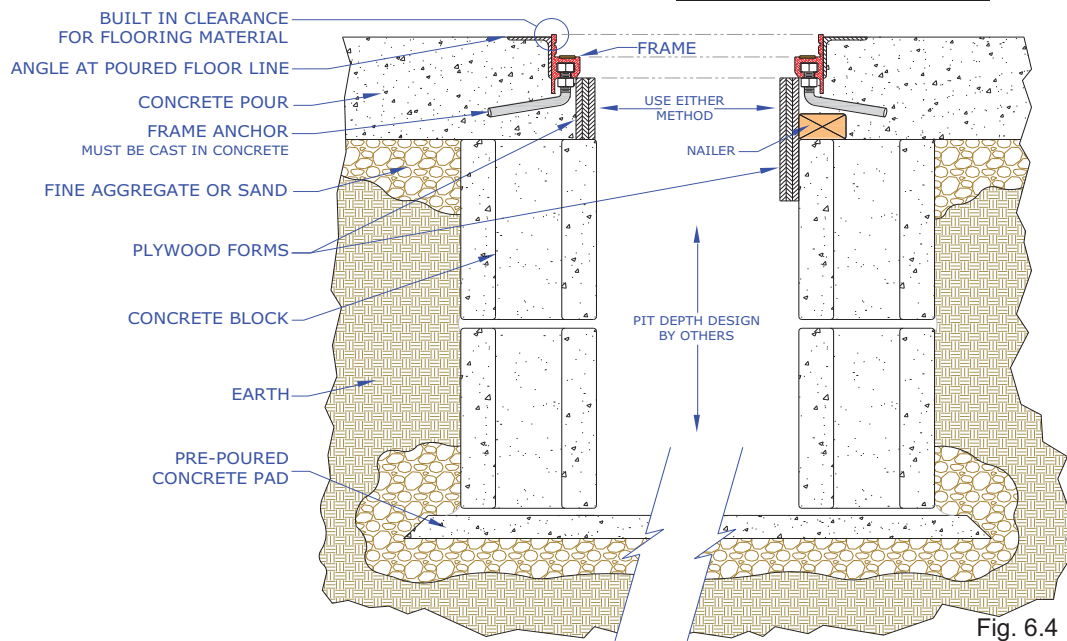
**RIGID FRAME ASSEMBLY TO BE USED WITH
ON-SITE CONSTRUCTED PITS**

FRAME & COVER
Installation Detail

Formed Monolithic



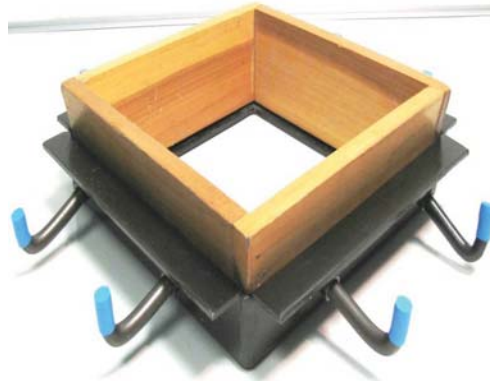
Concrete Block



**POUROVER ASSEMBLY TO BE USED WITH
ON-SITE CONSTRUCTED PITS**

Features That Make Us Your First Choice:

- ◆ **Structural Steel** frame for supporting cover or poured cap
- ◆ **Wood pourstop** holds back wet concrete and provides the needed offset



- ◆ **Securing Anchors** secures frame firmly into concrete floor
- ◆ **Cover Selection** of 20 gauge ribbed decking or 20 gauge galvanized smooth

**CASTS DIRECTLY INTO THE
CONCRETE POUR**

The **Pourover Frame** assembly gives support to floor openings and also creates support for a poured concrete cover or metal closeoff. The flanged edge and mounted anchors allows it to embed firmly into the concrete floor for greater load bearing.

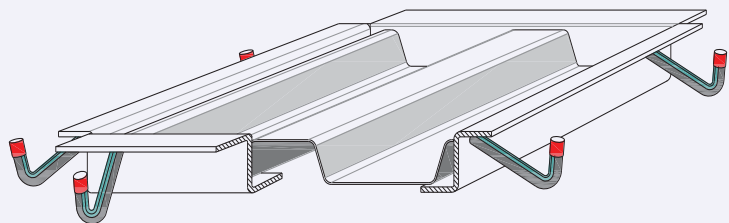


Fig. 7.1

The provided **wood pourstop** creates a concrete stop to prevent cement while pouring from entering the unit. The provided blocking is designed to allow for a 4" poured cap if it is to be used. The pourstop has been designed with a 10 degree taper, this helps avoid settlement of the cap at a future time.

Covers available are 22 gauge galvanized ribbed decking , (concrete pour), and 20 gauge galvanized steel closeoff

**POUROVER ASSEMBLY TO BE USED WITH
ON-SITE CONSTRUCTED PITS**

**FRAME ASSEMBLY
Construction Detail**

**CASTS DIRECTLY INTO THE
CONCRETE POUR**

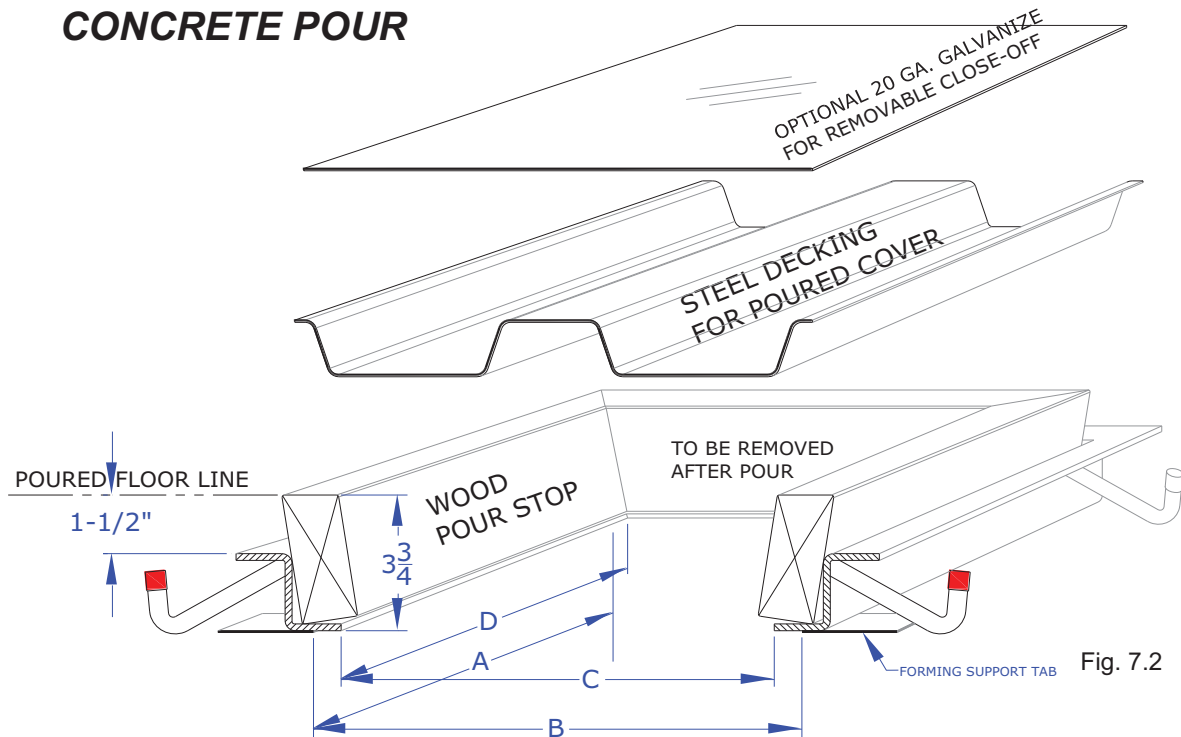


Fig. 7.2

DIMENSIONAL INFORMATION

INTERIOR WIDTH OR LENGTH OF INSIDE WALL OF FIELD FORMED PIT "A" OR "B"															
NOMINAL SIZE	12"	18"	24"	30"	36"	42"	48"	54"	60"	66"	72"	78"	84"	90"	96"
ACTUAL SIZE	10"	15-15/16"	21-7/8"	27-13/16"	33-3/4"	39-1 1/16"	47-5/8"	51-9/16"	57-1/2"	63-7/16"	69-3/8"	75-5/16"	81-1/4"	87-3/16"	93-1/8"
INTERIOR WIDTH OR LENGTH OF FRAME OPENING - "C" OR "D"															
	9-7/16"	15-3/8"	21-5/16"	27-1/4"	33-3/16"	39-1/8"	45-1/16"	51"	56-15/16"	62-7/8"	68-13/16"	75-3/4"	80-1 1/16"	86-5/8"	92-9/16"

Manufactured sizes shown. Custom sizes also available.

**POUROVER ASSEMBLY TO BE USED WITH
ON-SITE CONSTRUCTED PITS**

**FRAME ASSEMBLY
Installation Detail**

Formed Monolithic

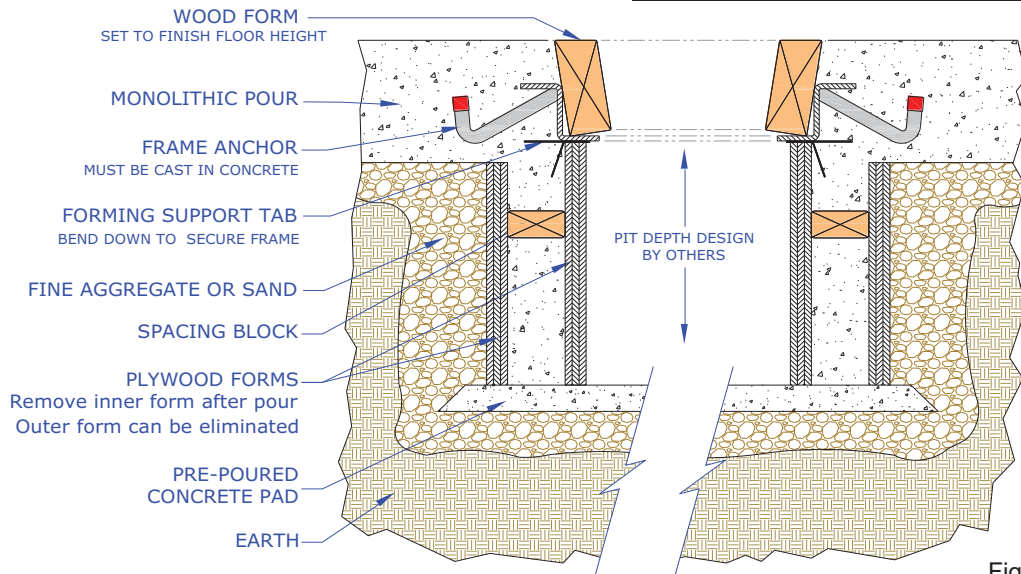


Fig. 7.3

Concrete Block Pit

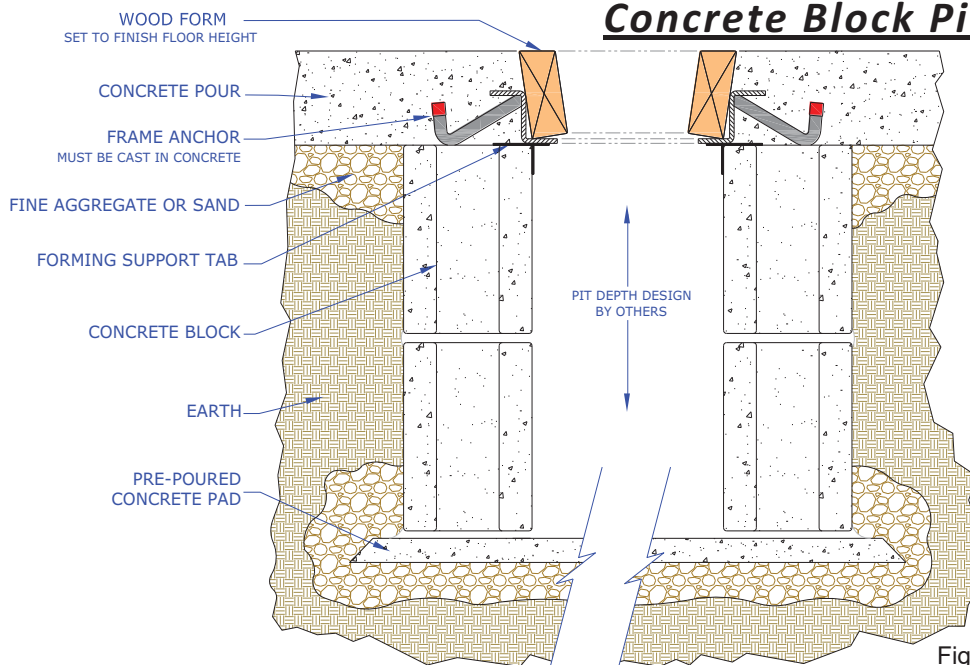


Fig. 7.4

**POUROVER ASSEMBLY TO BE USED WITH
ON-SITE CONSTRUCTED PITS**

**FRAME ASSEMBLY
Installation Detail**

Poured Cover Cap In-Place

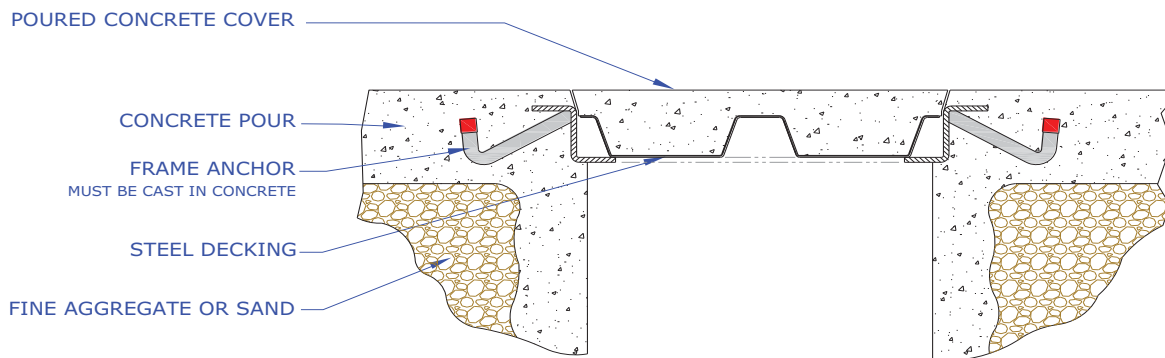


Fig. 7.5

Removable 20 Gauge Galvanized Closeoff
(For non load bearing applications)

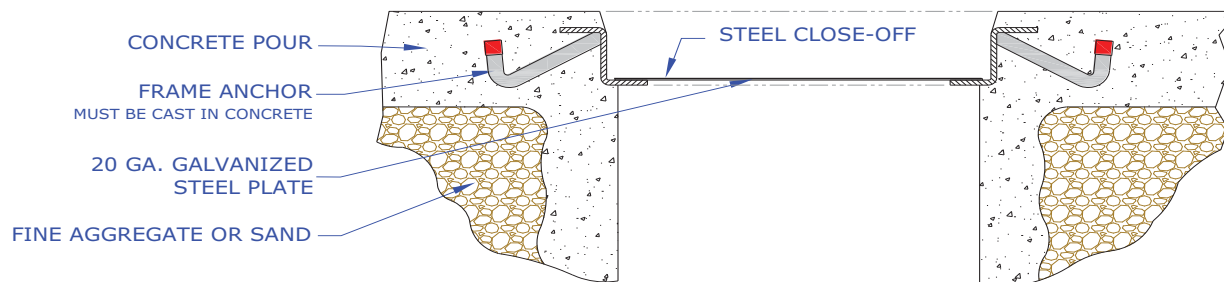
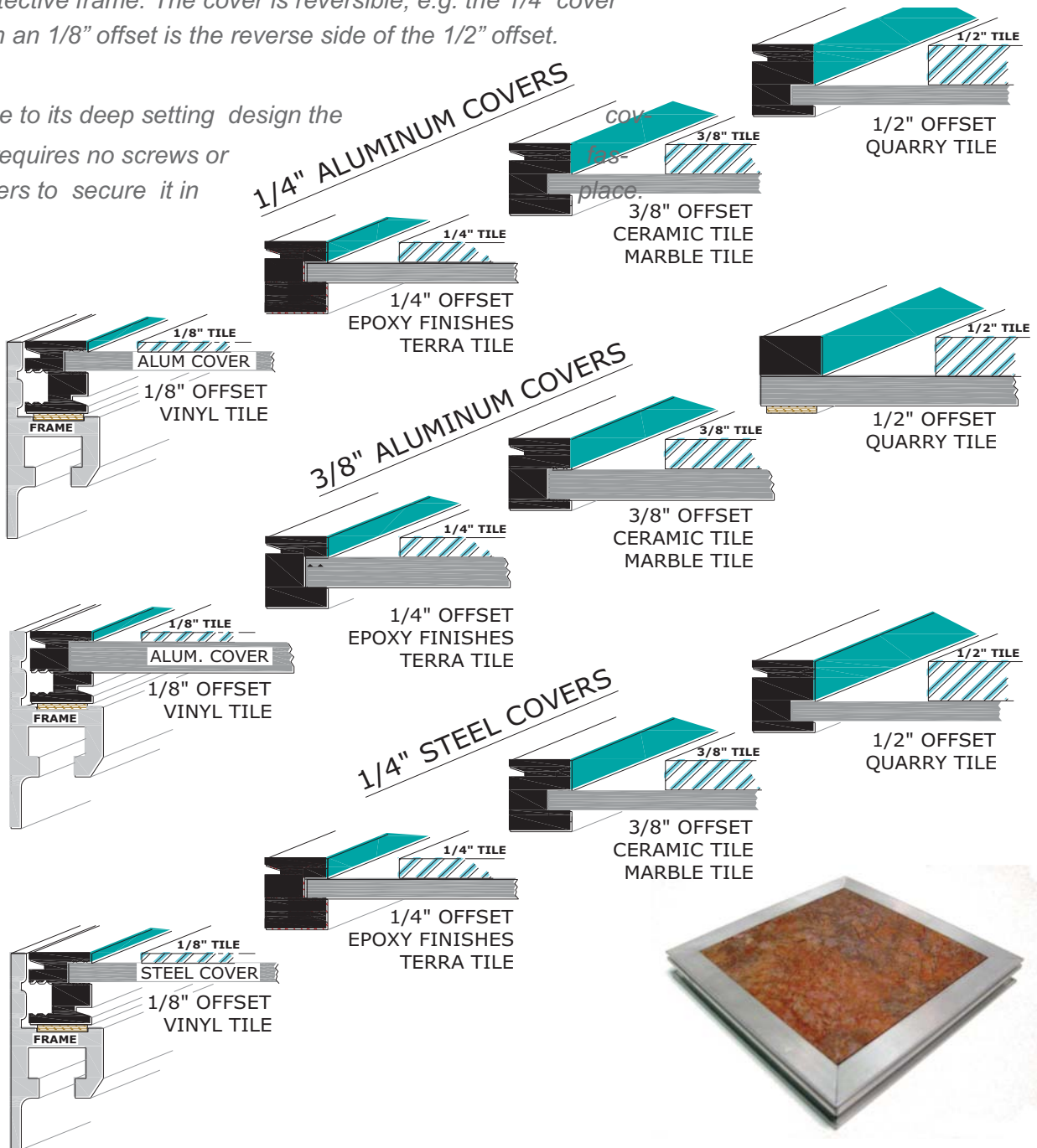


Fig. 7.6

Bordered Covers provide protection for your flooring material edges. All of the flooring material becomes recessed into the protective frame. The cover is reversible, e.g. the 1/4" cover with an 1/8" offset is the reverse side of the 1/2" offset.

Due to its deep setting design the cover requires no screws or fasteners to secure it in



Craigg Manufacturing Corp.
Manufacturers of In-Floor Access Enclosures

Phone: 610-678-8200 Fax: 610-678-8201
E-mail: craiggmfg@craigg.com
www.CRAIGG.com

Flush Covers provides a natural metallic finish. Available in a Treadplate pattern or a brushed mill finish. Covers can add a contrast to the surrounding finish.

With its deep setting design the cover requires no screws or fasteners to secure it in place.



TREAD PLATE

3/8" ALUMINUM COVER

1/4" STEEL COVER

1/4" ALUMINUM COVER

FLUSH MILL FINISH

3/8" ALUMINUM COVER

1/4" STEEL COVER

1/4" ALUMINUM COVER

CONCEALED

3/8" ALUMINUM COVER

1/4" STEEL COVER

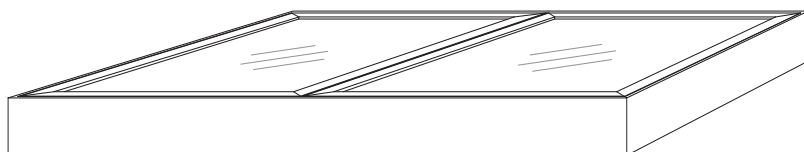
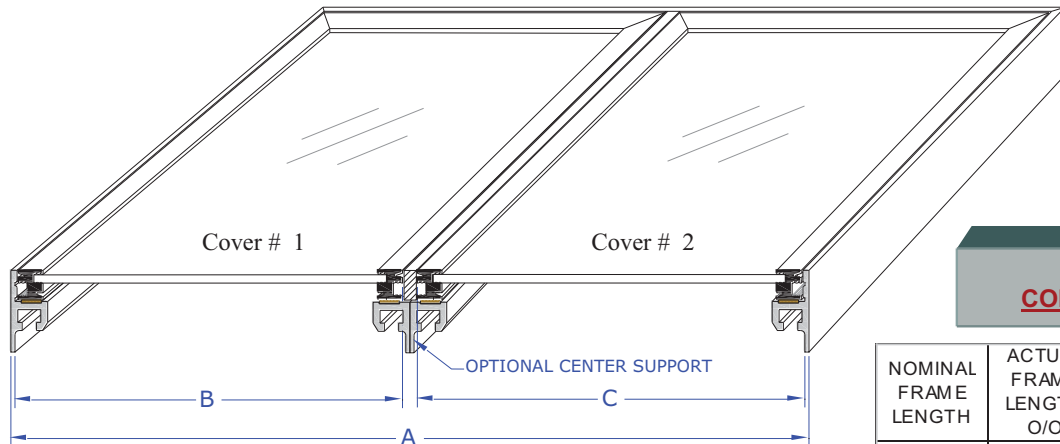
1/4" ALUMINUM COVER



Two Piece covers allows the frame to be divided into two standard covers.

This cover arrangement is beneficial when limited access to the opening is needed or reducing the size of the covers will allow for easier removal.

Any type, finish or style of covers can be paired together.



SEE THE PAGE ON PARTIAL COVERS IF A CUSTOM SIZE IS REQUIRED OR IF PART OF THE PIT COVER IS TO REMAIN OPEN.

COVER COMBINATIONS

NOMINAL FRAME LENGTH	ACTUAL FRAME LENGTH O/O	COVER #1	COVER #2
A	A	B	C
24"	23-3/4"	11-7/16"	11-7/16"
30"	29-11/16"	11-7/16"	17-3/8"
36"	35-1/4"	11-7/16"	23-5/16"
		17-3/8"	17-3/8"
42"	41-3/16"	11-7/16"	29-1/4"
		17-3/8"	23-5/16"
48"	47-1/2"	11-7/16"	35-3/16"
		17-3/8"	29-1/4"
		23-5/16"	23-5/16"
54"	53-5/8"	11-7/16"	41-1/8"
		17-3/8"	35-3/16"
		23-5/16"	29-1/4"
60"	59-3/8"	11-7/16"	47-1/16"
		17-3/8"	41-1/8"
		23-5/16"	35-3/16"
		29-1/4"	29-1/4"
66"	65-5/16"	11-7/16"	53"
		17-3/8"	47-1/16"
		23-5/16"	41-1/8"
		29-1/4"	35-3/16"
72"	71-1/4"	11-7/16"	59-7/32"
		17-3/8"	53-9/32"
		23-5/16"	47-1/16"
		29-1/4"	41-1/8"
		35-3/16"	35-3/16"

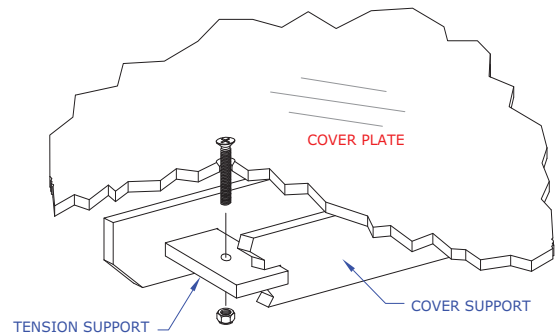
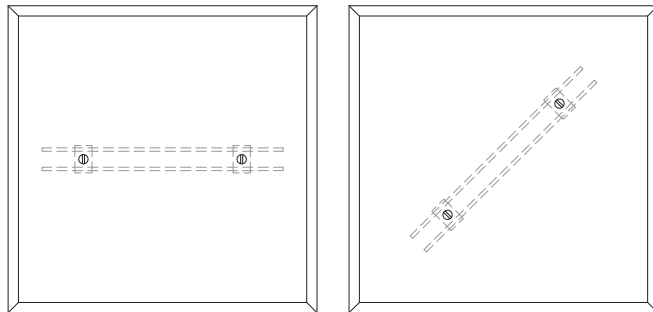
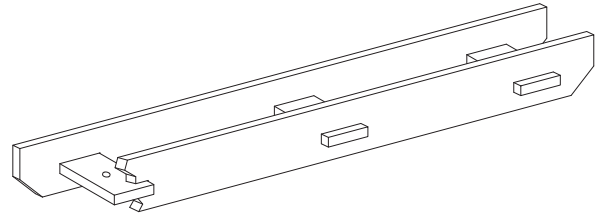


Cover Styles

Cover Supports

Cover Supports are recommended on larger covers or those subjected to heavier loading and/or traffic.

Cover Supports are recommended on covers over 30" square or on partial covers where one edge does not rest on the frame and is subject to traffic weight.



COVER PLATE STRENGTH RATINGS LBS. PER SQ. FT.

NOTE:

Pit covers and frames are engineered for light and medium surface loads that are usually applied with their indoor use.

Calculations are based on:

Covers informally loaded.

All four edges being supported.

A maximum deflection of L/150 of the short side. Maximum allowed shear strength is greater.

Cover supports are used to strengthen plate and reduce the deflection rate. No strength ratings are available for this configuration.

COVER PLATE THICKNESS	LONGEST SPAN	SHORTEST SPAN						
		1'-0"	1'-6"	2'-0"	2'-6"	3'-0"	3'-6"	4'-0"
1/4"	1'-0"	1959						
	1'-6"	1022	580					
	2'-0"	778	355	245				
	2'-6"	705	274	160	124			
	3'-0"	648	230	130	88	72		
	3'-6"	633	216	109	72	55	46	
	4'-0"	619	202	94	60	45	36	30
3/8"	1'-0"	6610						
	1'-6"	3485	1960					
	2'-0"	2650	1210	820				
	2'-6"	2400	922	550	415			
	3'-0"	2200	785	430	300	245		
	3'-6"	2140	720	360	245	187	155	
	4'-0"	2100	691	317	202	151	121	104

Craig Manufacturing assumes no responsibility for the accuracy or completeness of these tables which are supplied solely as a convenience to the user.

Craig Manufacturing Corp.
Manufacturers of In-Floor Access Enclosures

Phone: 610-678-8200 Fax: 610-678-8201
E-mail: craigmfg@craig.com
www.CRAIGG.com

Two Part Frame Assembly

The **TWO PART** frame consist of two independent adjustable frames that fit into one base frame. Two smaller frames and covers can be used for gaining access that will not compromise the units strength. This is especially beneficial when part of the unit is inaccessible in its location. Each frame can be independently adjusted to accommodate differences in flooring type thicknesses. The **TWO PART** frame adds flexibility in that both frames do not have to be of equal size.

Any cover type and style can be used independently along with partial covers on the Two Part Frame

Available with Liner or Frame Only

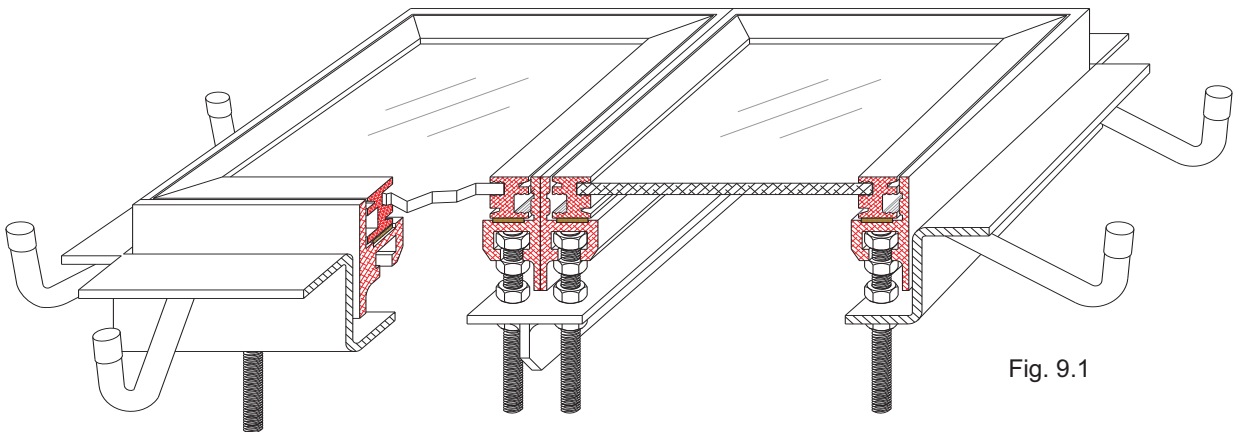


Fig. 9.1

Install as you would the MODEL ADL in Section 2 if a liner is utilized or the MODEL ADF in Section 4 if for the frame only

Sizing unit is accomplished by :

FIRST by selecting the overall frame size needed using the dimension information chart of the Model ADF section 4-2

SECOND by selecting the aluminum frame sizes needed for the both halves from Model RCF section 5-2. Each half can be of a different size totaling the overall dimension.

THIRD Choose the approvable cover size and type from Cover section 8-1, 8-2, 8-3

The two part frame consist of two independent adjustable frames that fit into one base frame. Two smaller frames and covers can be used for gaining access that will not compromise the units strength this is especially beneficial when part of the unit is inaccessible. Each frame can be independently adjusted to accommodate differences in flooring type.

Two Part Frame Assembly Construction Detail

Partial covers can also be used in conjunction with the Two Part Frame

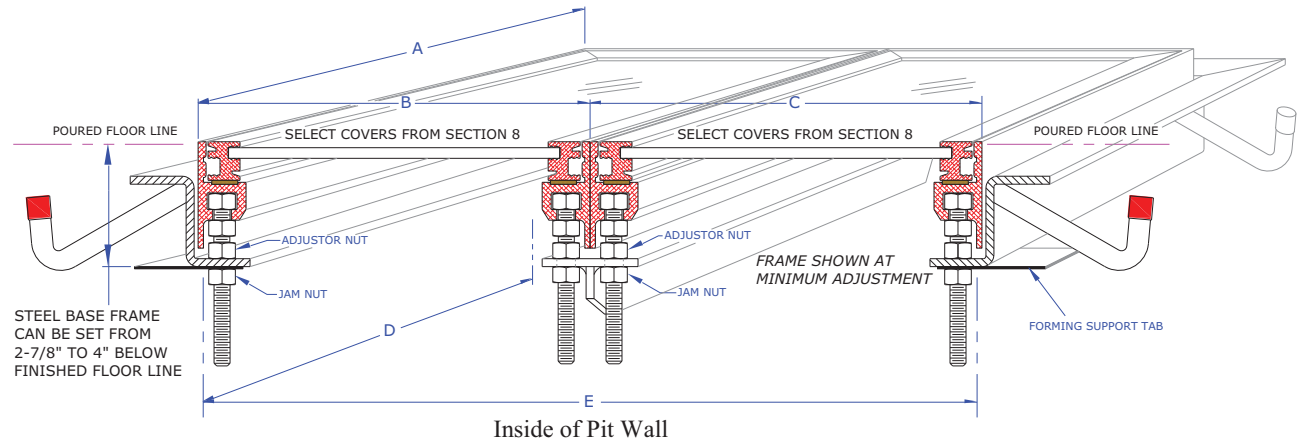


Fig. 9.2

BOTH FRAMES DO NOT HAVE TO BE OF EQUAL SIZE OR COVER STYLE

For Installation of this unit use the ADL in section 2 or the ADF in section 4

DIMENSIONAL INFORMATION

WIDTH OR LENGTH OF ALUMINUM FRAME "A" OR "B" OR "C"															
NOMINAL SIZE	12"	18"	24"	30"	36"	42"	48"	54"	60"	66"	72"	78"	84"	90"	96"
ACTUAL SIZE	11-7/8"	17-13/16"	23-3/4"	29-11/16"	35-5/8"	41-9/16"	47-1/2"	53-7/16"	59-3/8"	65-5/16"	71-1/4"	77-3/16"	83-1/8"	89-1/16"	95"
WIDTH OR LENGTH OF INSIDE WALL OF FIELD FORMED PIT - "D" OR "E"															
	10"	15-15/16"	21-7/8"	27-13/16"	33-3/4"	39-11/16"	47-5/8"	51-9/16"	57-1/2"	63-7/16"	69-3/8"	75-5/16"	81-1/4"	87-3/16"	93-1/8"

Manufactured sizes shown. Custom sizes also available.

Combination Adjustor and Pourover Frame & Liner

The APL unit is designed for areas that have limited available access area but requires the need for a larger pit. The first half utilizes our standard Model ADL frame with your choice of cover type, the balance of the unit is tied in with the poured floor.

Units are available in nominal 6 inch increments in length, width and depth.

Sizing unit is accomplished by :

FIRST by selecting the overall unit size needed using either the dimension information chart of the Model ADL section 2-2 or the Model POL section 3-2.

SECOND selecting the aluminum frame size needed for the accessible side from Model RCF section 5-2.

THIRD Choose the cover size and type from Cover section 8-1, 2, 3

Available with Liner or Frame Only

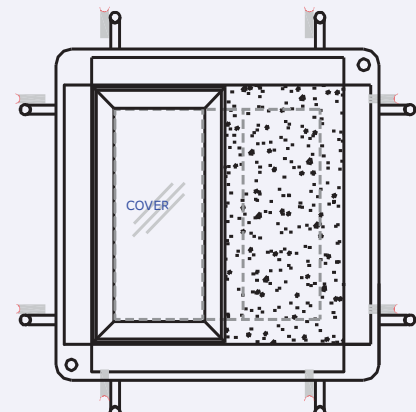


Fig. 9.1

Construction Detail

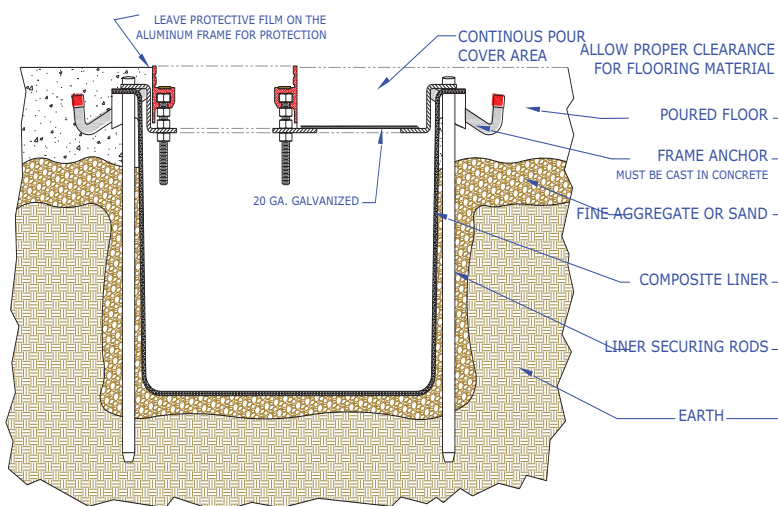


Fig. 9.2

Installation Detail

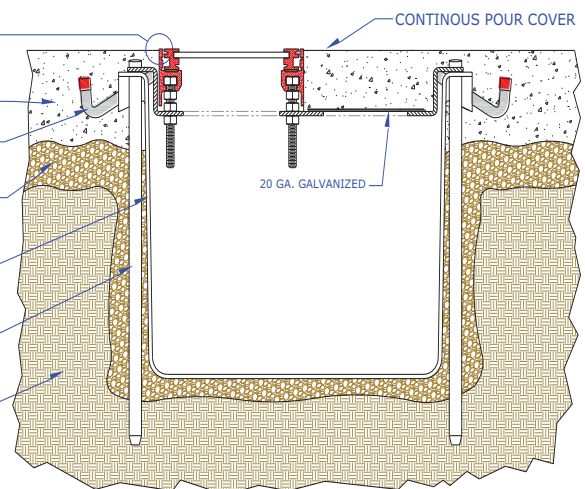


Fig. 9.3

Angled Adjustor and Pourover Frame & Liner

The APD unit is designed for areas that would benefit from the unit placed at an angle. The larger pit allows for ample working space and better under ground access. The triangular finished frame is placed 90 degrees to the setting position. The accessible frame section utilizes our standard Model ADL frame with your choice of cover type, the balance of the unit is tied in with the poured floor.

Available with Liner or Frame Only

Units are available in nominal 6 inch increments in length, width and depth.

Sizing unit is accomplished by :

FIRST by selecting the overall unit size needed using either the dimension information chart of the Model ADL section 2-2 or the Model POL section 3-2.

SECOND by selecting the aluminum frame size needed for the accessible side.

THIRD Choose the cover size and type from Cover section 8-1,2,3

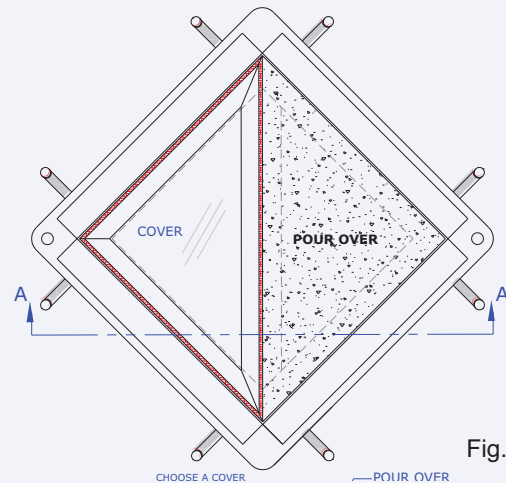


Fig. 9.1

Construction Detail

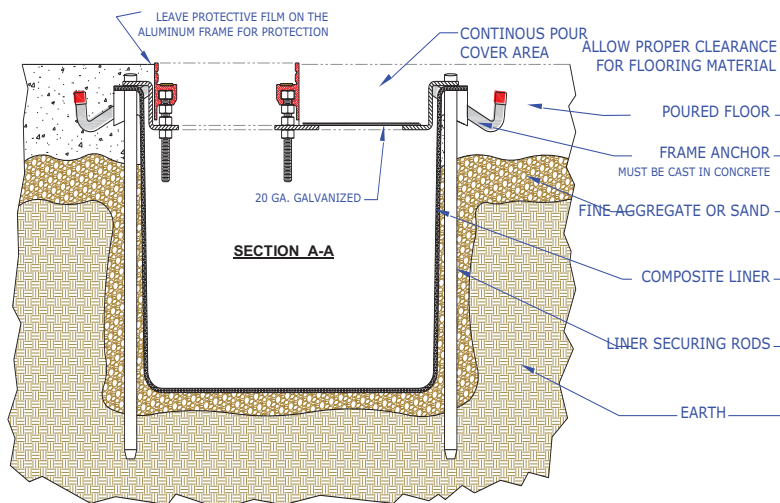


Fig. 9.2

Installation Detail

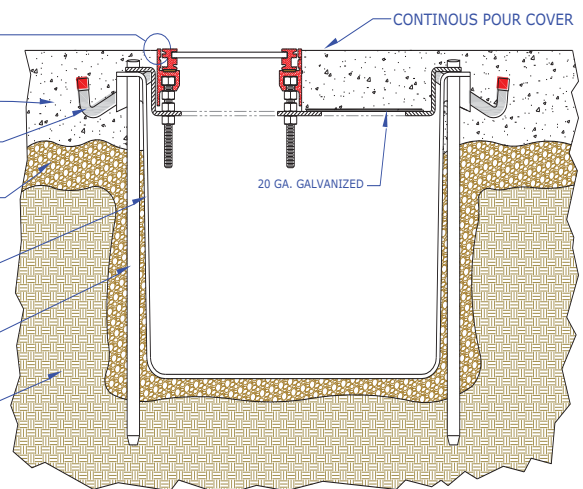


Fig. 9.3

Double End Adjustor with Pourover Center Frame & Liner

The APA unit allows access from either end when the center section is obstructed. This pit allows for pass through convenience of mechanicals.

Units are available in any of our nominal sizes in 6 inch increments in length ,width and depth.

Sizing unit is accomplished by :

FIRST by selecting the overall unit size needed using either the dimension information chart of the Model ADL section 2-2 or the Model POL section 3-2.

SECOND by selecting the aluminum frame size needed for both accessible sides. Each can be different section 3-2 Model RCF can provide this information

THIRD Choose the cover size and type from Cover section 8-1,2,3

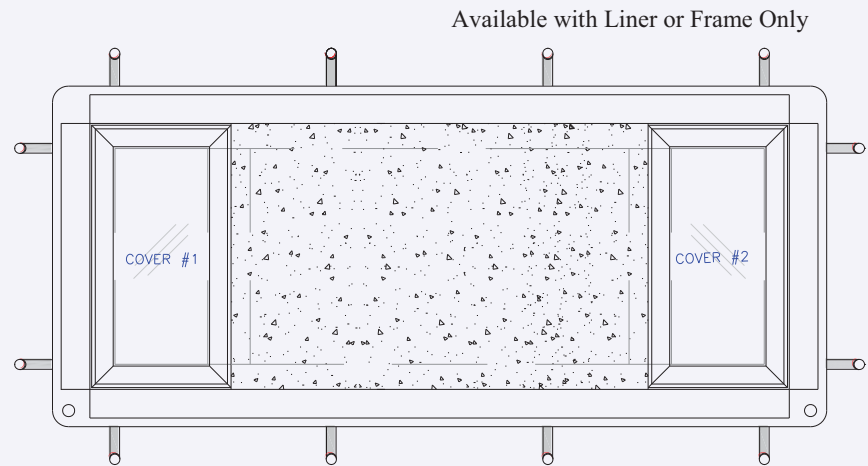


Fig. 9.1

Installation Detail

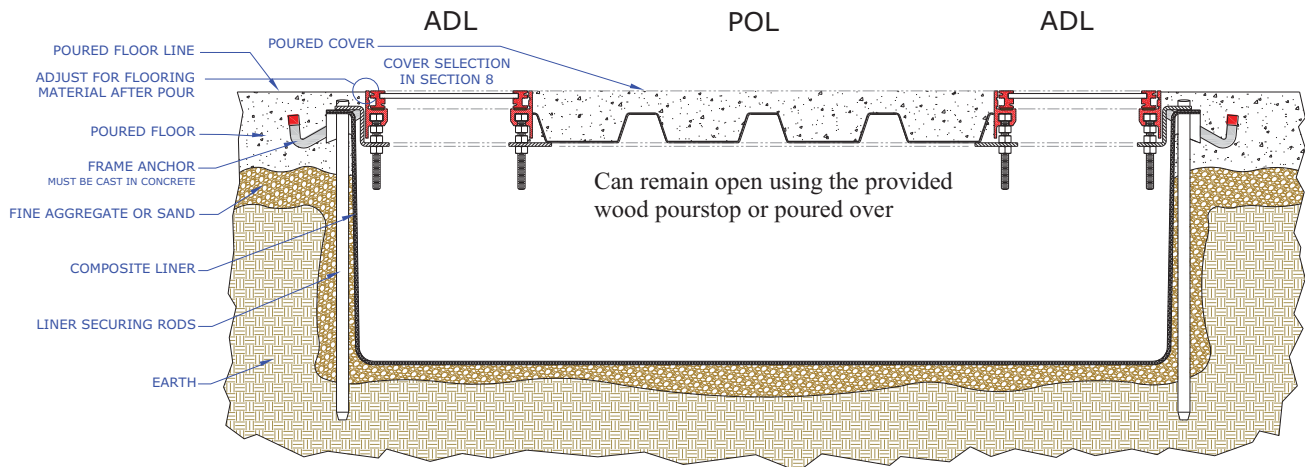


Fig. 9.2

Combination Adjustor ,Pourovers and Open Area Frame & Liner

The APO unit is designed for areas that allows a partition wall to cross over the pit . Access at the wall can be either inside the wall or behind it . This solid base under the wall can then be properly sealed to avoid liquids entering the pit .The removable cover still makes it accessible.

Units are available in any of our nominal sizes in 6 inch increments in length ,width and depth.

Sizing unit is accomplished by :

FIRST by selecting the overall unit size needed using either the dimension information chart of the Model ADL section 2-2 or the Model POL section 3-2.

SECOND selecting the aluminum frame size needed for the accessible side from Model RCF section 5-2. then choose the cover size and type from Cover section 8-1,2,3

THIRD In the remaining opening determine the poured cover size and needed opening area.

Available with Liner or Frame Only

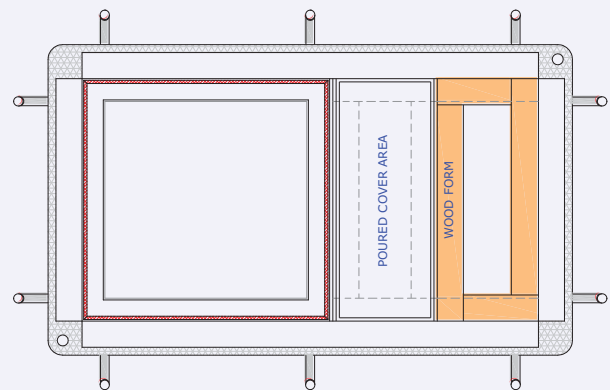


Fig. 9.1

Construction Detail

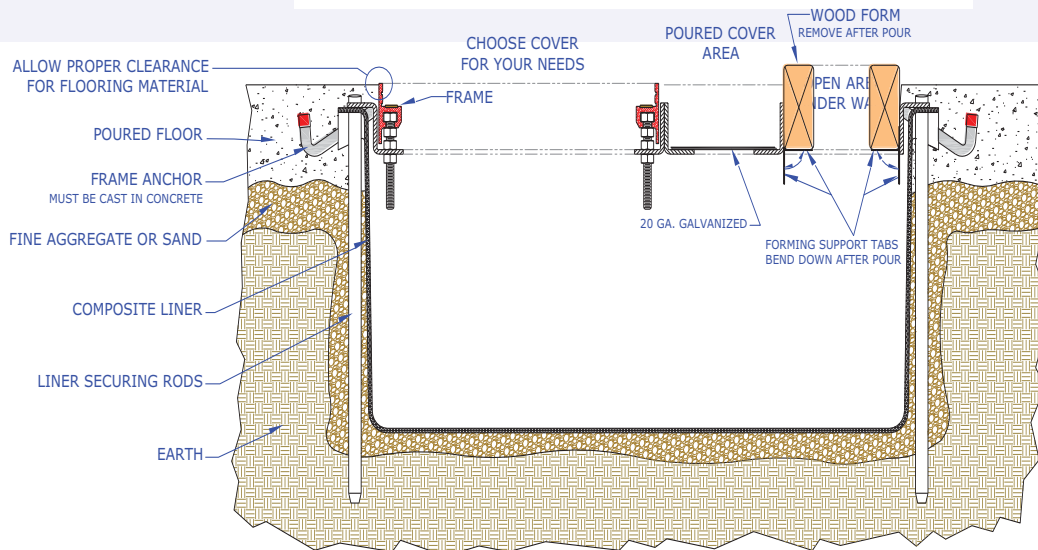


Fig. 9.2

Combination Adjustor, Pourover and Open Area Frame & Liner

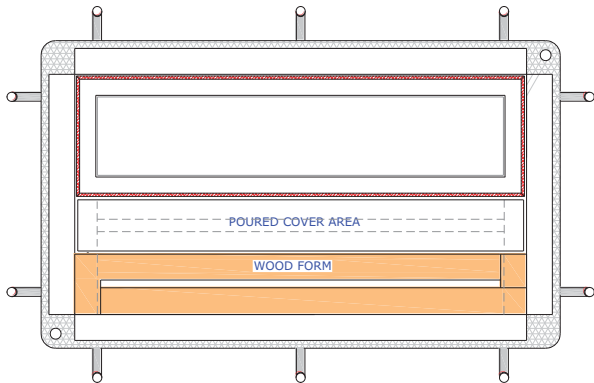


Fig. 9.4

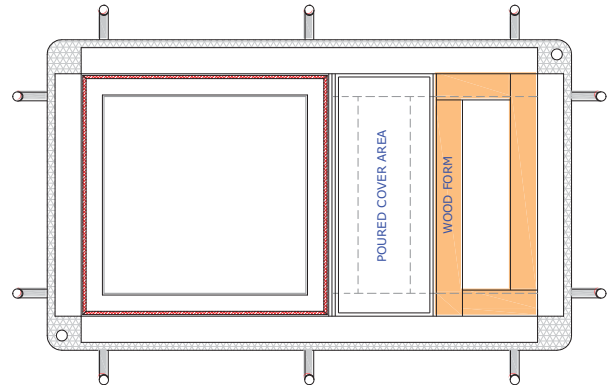


Fig. 9.3

Installation Detail

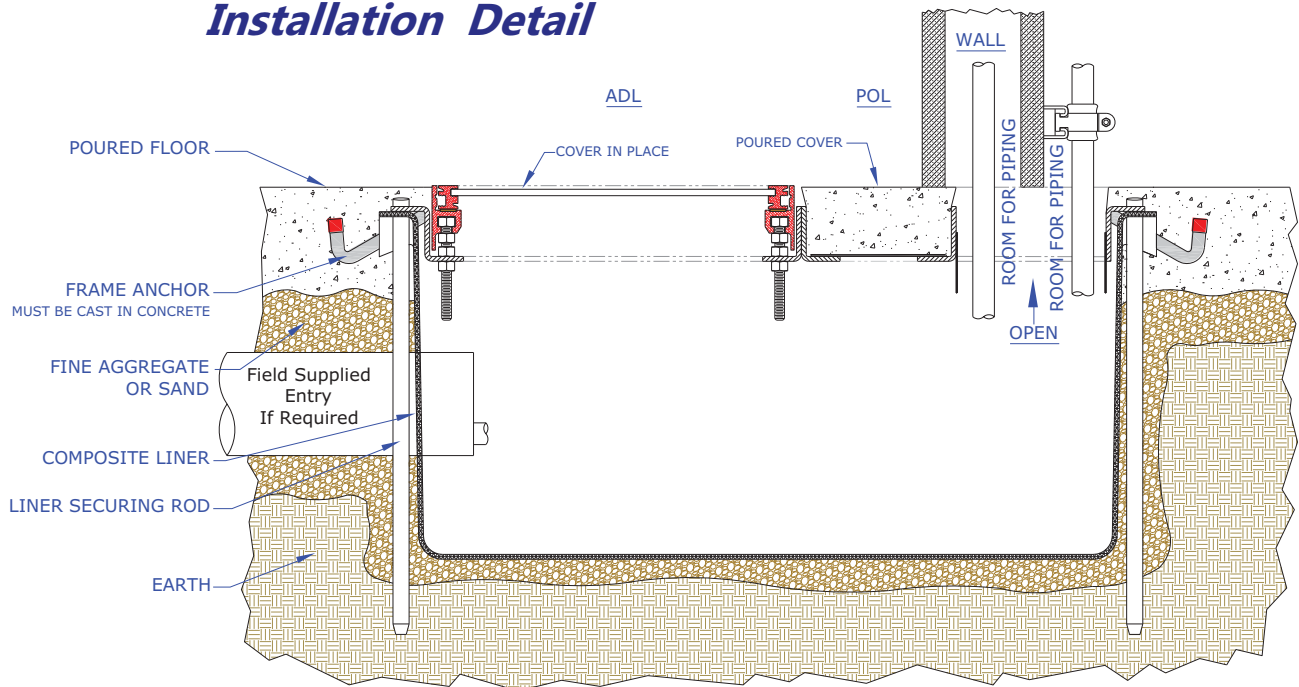


Fig. 9.5

"W" WALL UNITS

Flush Mounting Unit Frame & Liner



The "W" unit design is a minimum amount of installation against a wall. The prime location for its use is along an exterior foundation wall or a partition wall. This allows any vertical entrances into the pit to stay tight against the wall. The "W" unit is available in both MODELS ADL and POL and in all of our manufactured sizes.

so that one or more sides will have frame structure to interfere with its

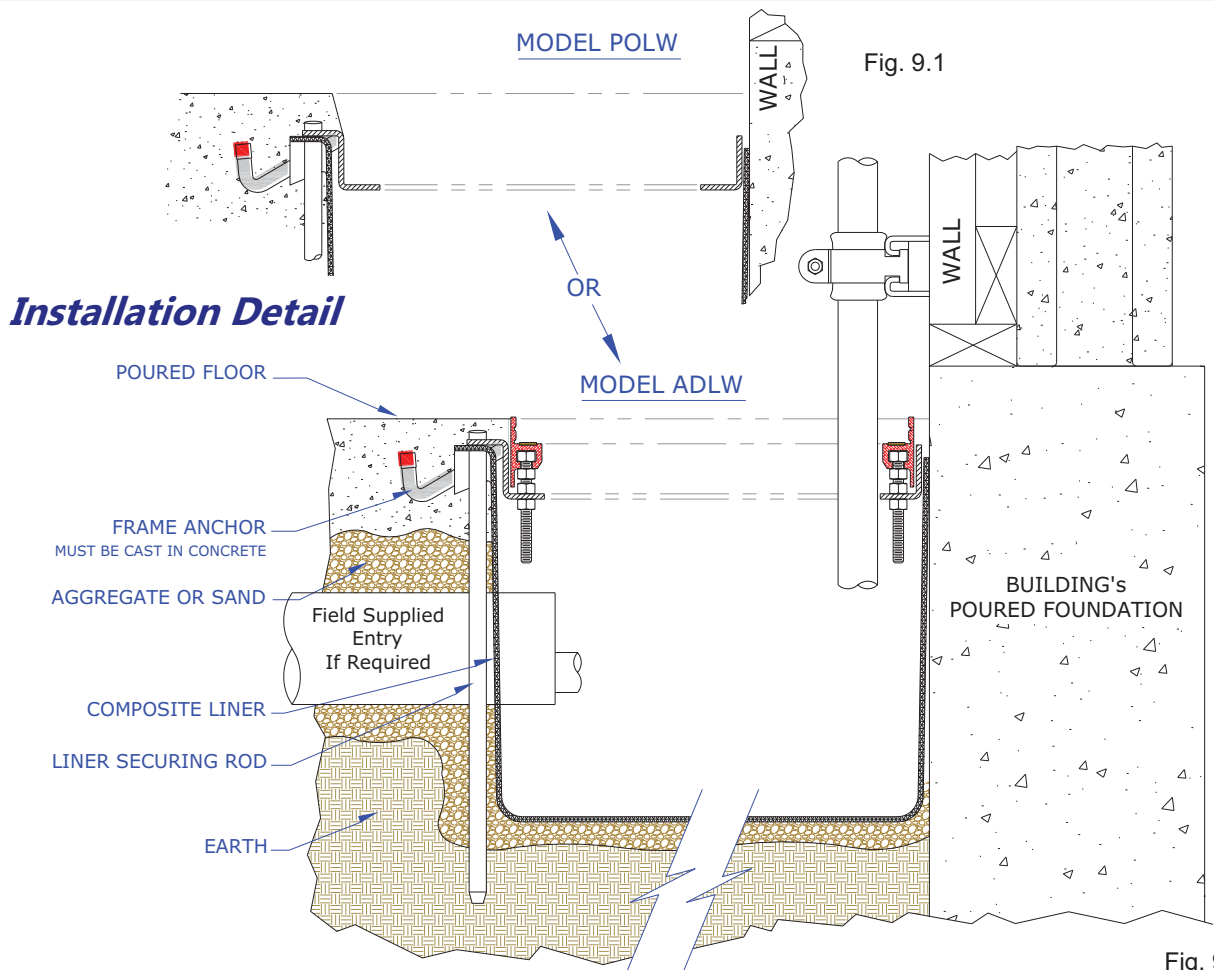
frame structure to interfere with its

frame structure to interfere with its

frame structure to interfere with its

frame structure to interfere with its

frame structure to interfere with its



Fixed Cover with Frame & Liner

The CLL is another of our **One Step** installation units. The CLL's simpler design proves it still can provide you a solid and attractive in-floor unit. It does limit the choice of cover types and finishes to Flush Mill or Treadplate in steel or aluminum. Like all of our units the liner is made of a heavy composite material that incorporates a sturdy steel supporting frame. The concrete floor area surrounding pit is poured flush with the finished cover.

Units are available in all our nominal sizes in 6 inch increments in length, width and depth.

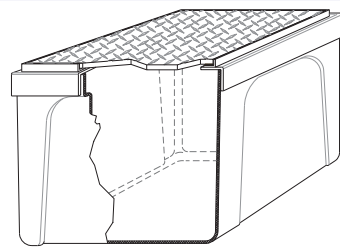
Size unit from the dimension information chart of the Model ADL section 2-2

Cover selection is limited to the Cover Styles shown on Section 8-3
Flush Covers



Fig. 9.1

Clear Access Dimensions	
Pit Size	A"
18"	17"
24"	23"
30"	29"
36"	34 3/4"
42"	41"
48"	47"
54"	53"
60"	59"
66"	65"
72"	71"



Installation Detail

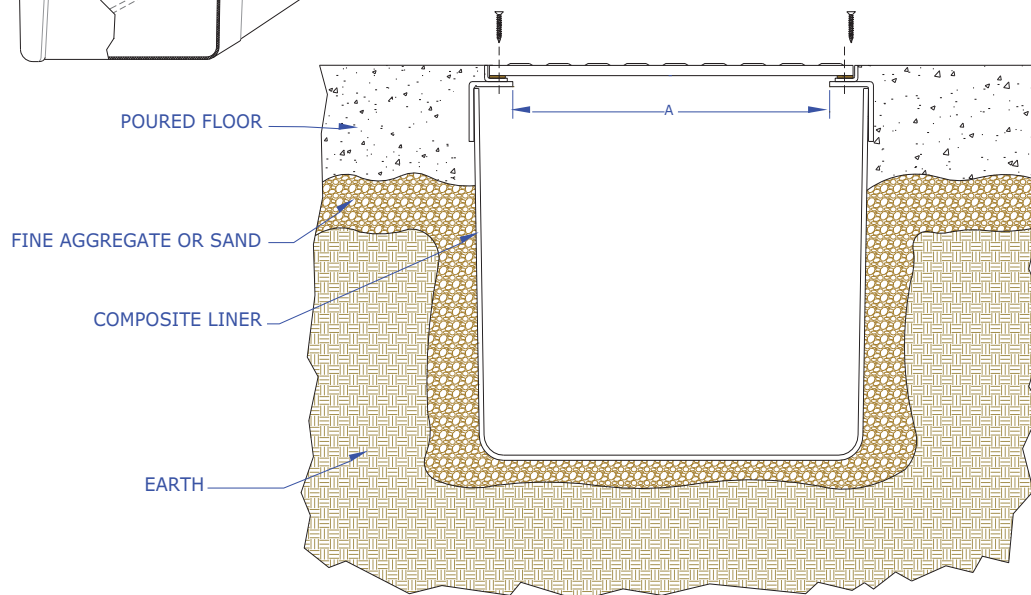


Fig. 9.2