

Hussmann *Plus* Specialty



Current Ambient Display Fixtures

- “C” Series of Wallcases
 - Pastry Wall Case
 - Bagel Pasty Case
 - Artisan Bread Display
- Custom Pastry Displays
- Custom Wine Displays
- Floral Displays
- Countertop Display
- Hot Unit



Specialty Bakery Products – C Series **HUSSMANN®**



Merchandising Flexibility

Open shelving for packaged products and enclosed shelving for unwrapped products

Functional Design

Trash, tissue, bag and box designed into front package ledge

Matching Product Platform

Multiple bakery application solutions with matching contours

New Bakery Solutions now Available from Hussmann Specialty Plus



Pastry Wall Case

Dry Self-Service Multi-Deck
Merchandiser

For Un-packaged Pastry Products

Pastry and Bagel Wall Case

Dry Self-Service Multi-Deck Merch
2 levels of Bagel Bins For Bakery
Products.



Artisan Bread Merchandiser

Dry Self-Service Multi-Deck Merch
Shelving For Packaged Bread



Full Ambient Bakery Solution Offering Now Available

"C" Series Pastry Wall Case Line

HUSSmann®



- Portfolio Compliment
- All styles come in 48" - 57" – 75" lengths
- Designed to accommodate industry standard bakery pans
- Custom Colors are available
- Price ranges are \$2900 – \$4500 based on type and options
- Lead time is 4 – 6 weeks



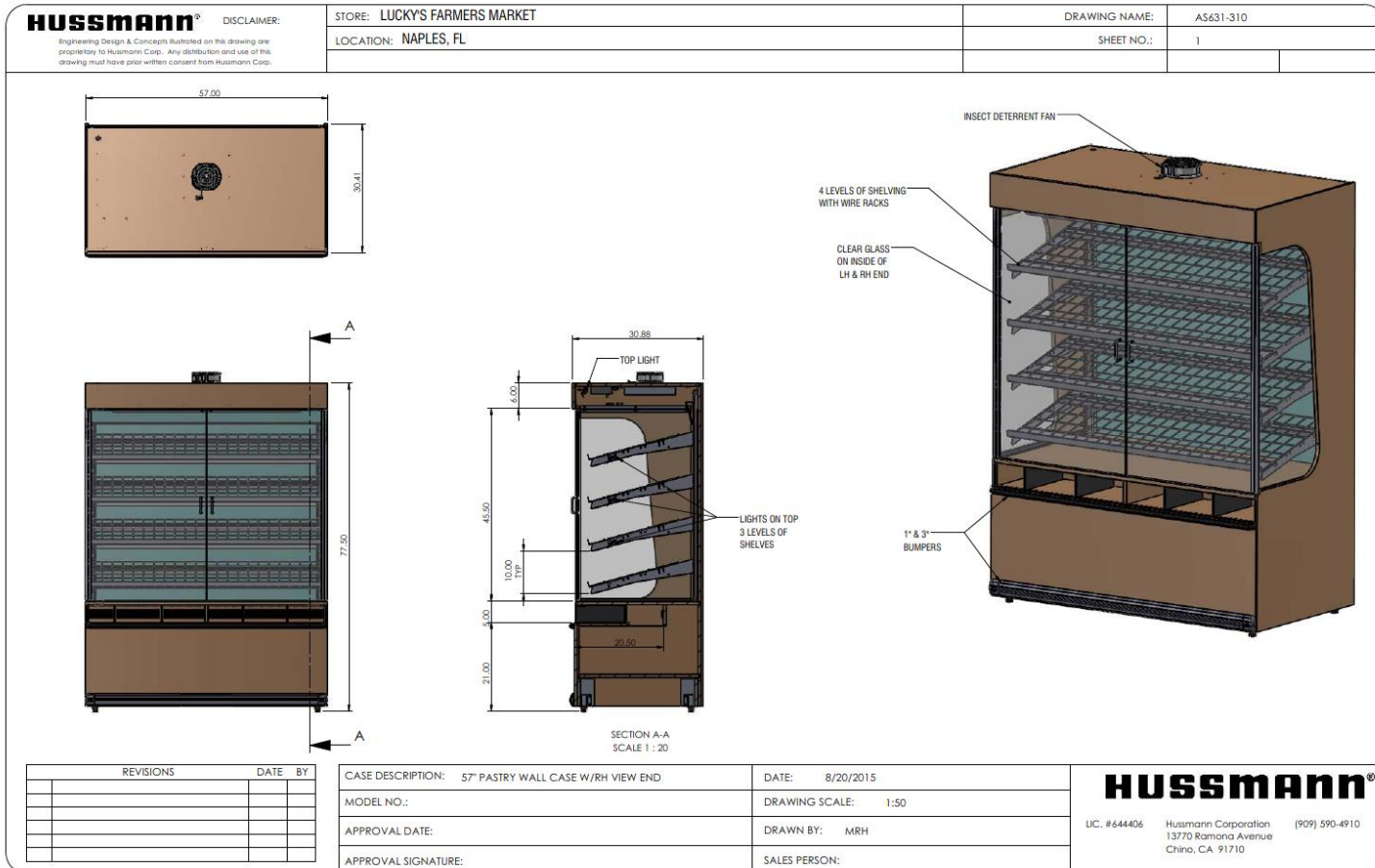
HUSSmann®

LIC. #644406 Hussmann Corporation (909) 590-4910
13770 Ramona Avenue
Chino, CA 91710

Newest Release To The “C” Series Line Up – Artisan Bread/Baguette Wall Case

"C" Series Pastry Wall Case Line

HUSSmann®

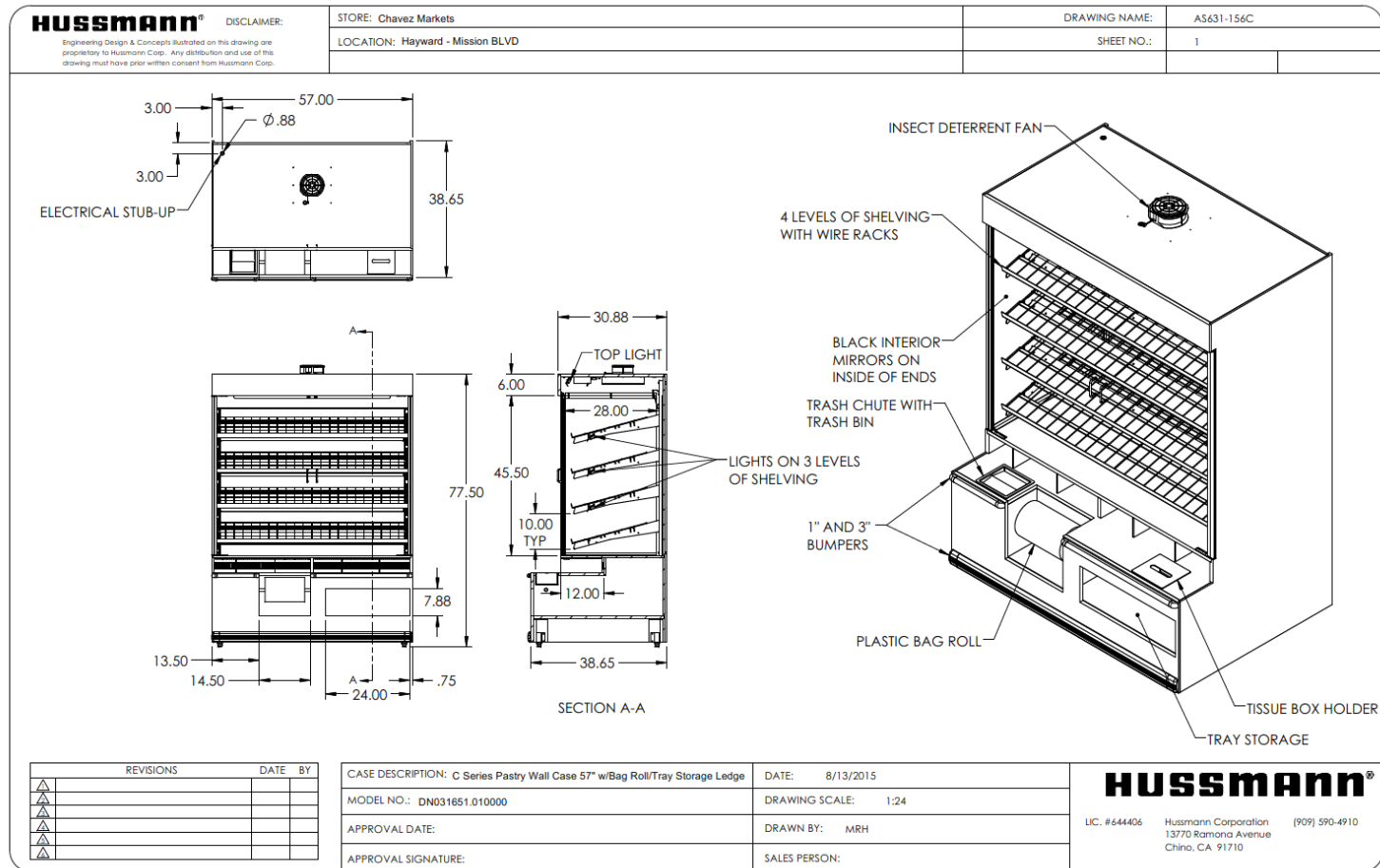


View End Options and No Package Ledge

Customization of the "C" Series Pastry Case Line

"C" Series Pastry Wall Case Line

HUSSmann®



Package Ledge Options – Bag Roll - Storage

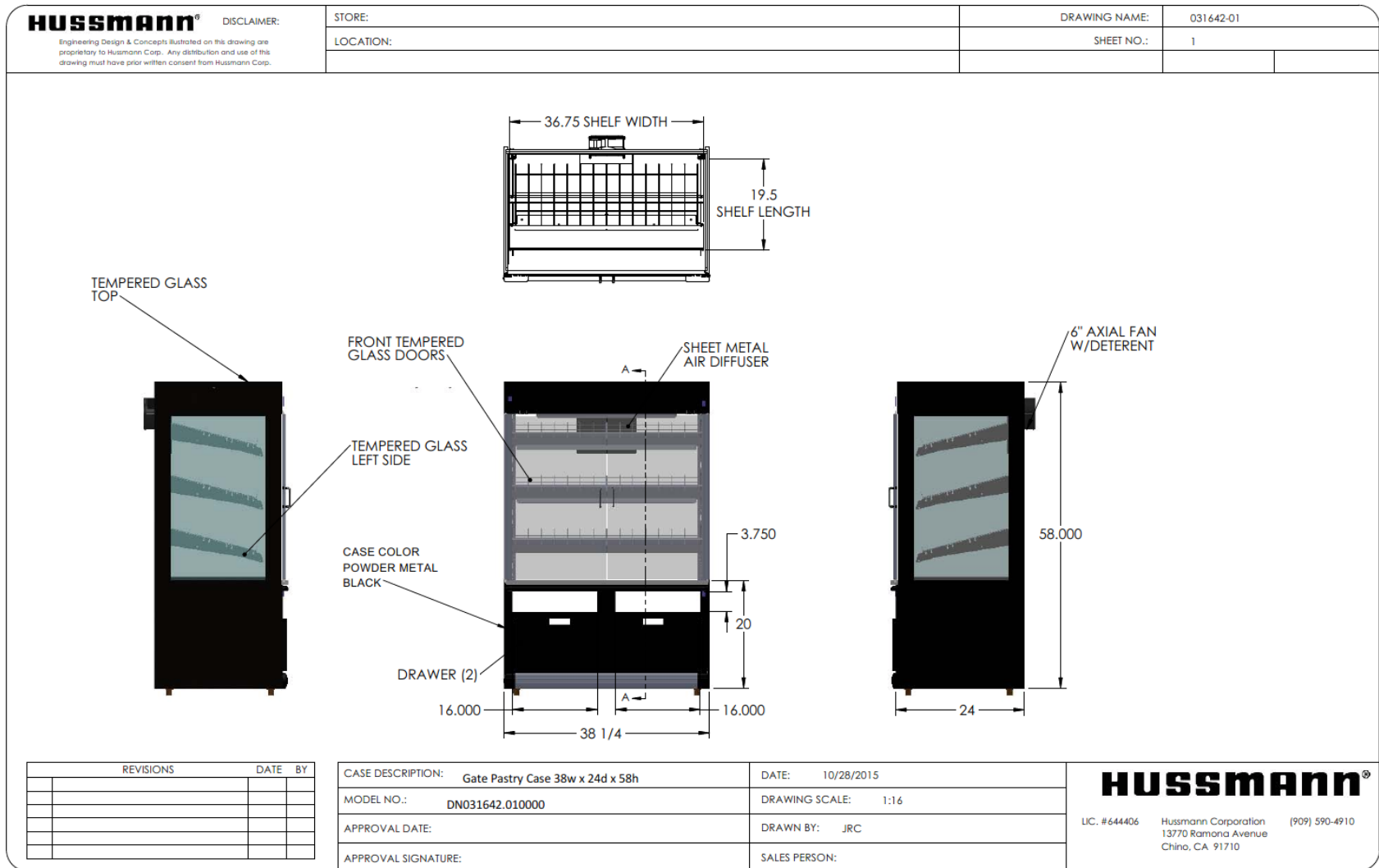
Customization of the "C" Series Pastry Case Line



Customization of the "C" Series Pastry Case Line

"ISLA" Series Pastry Wall Case Line

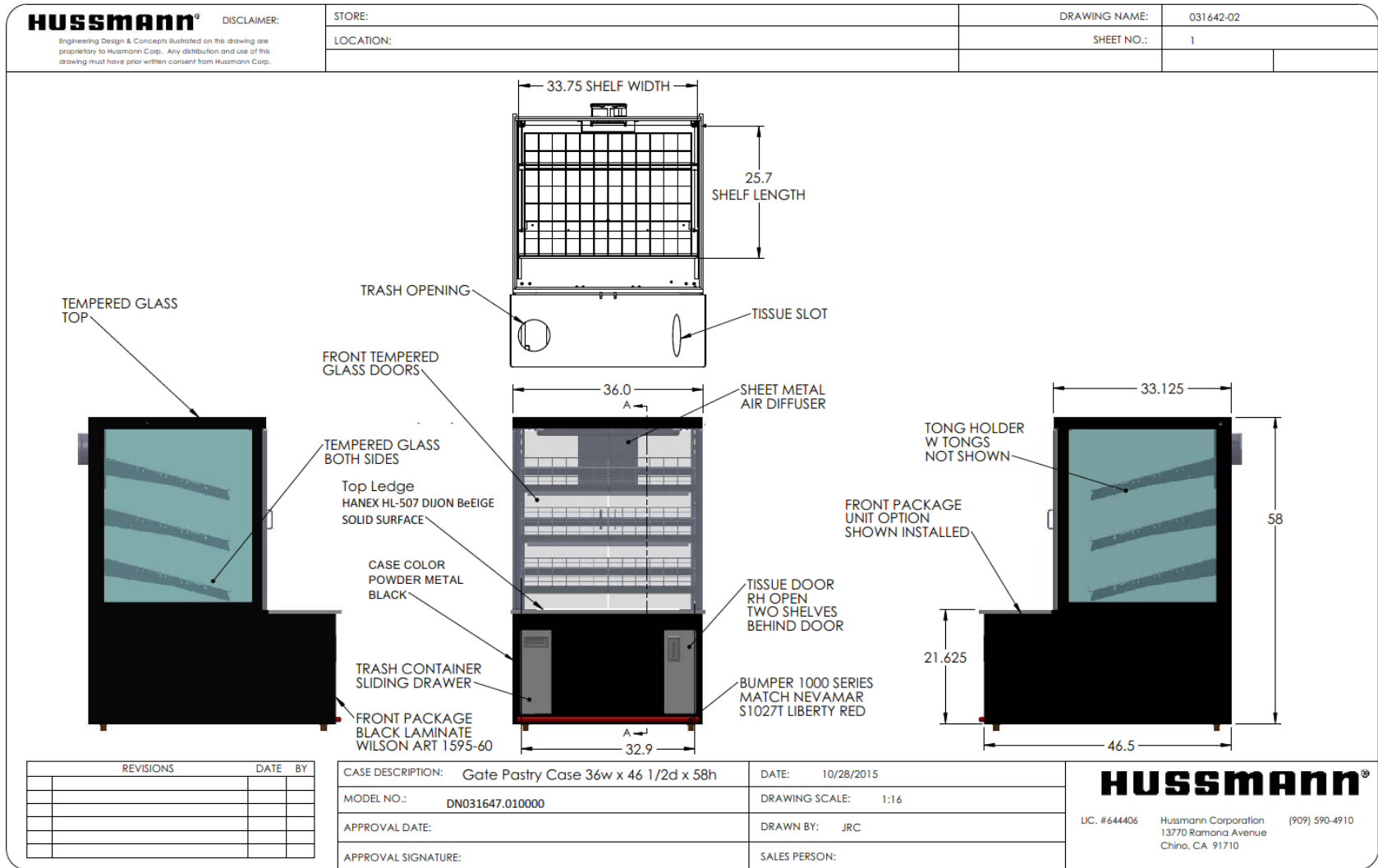
HUSSmann®



ISLA Pastry Case 38"W x 24"D x 58"H

"ISLA" Series Pastry Wall Case Line

HUSSmann®



ISLA Pastry Case 36"W x 46-1/2"D x 58"H w/ Box Ledge

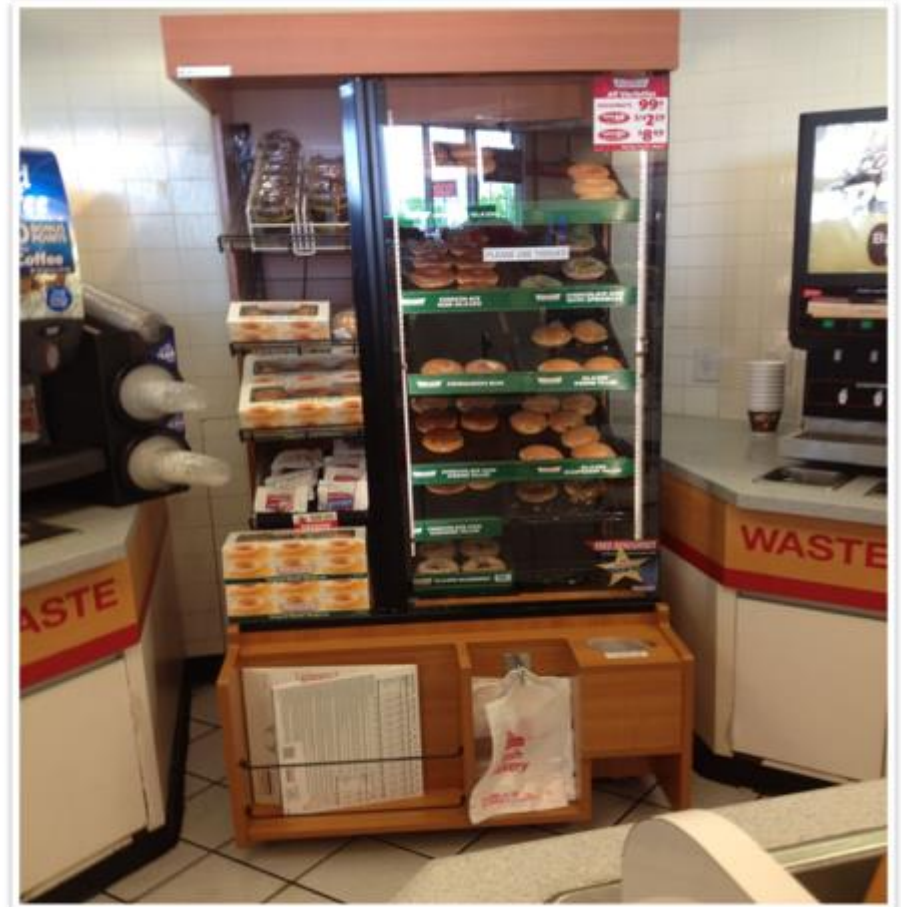


- Unique Pastry Solutions in Portfolio
- Round Pastry Tower
- Product Visibility
- Clean ledge options
- Center of Bakery - Destination
- 4 – 6 week lead time
- Price Range \$9k - \$11k

Ambient Pastry Displays



Convenience Store
Small Format Pastry

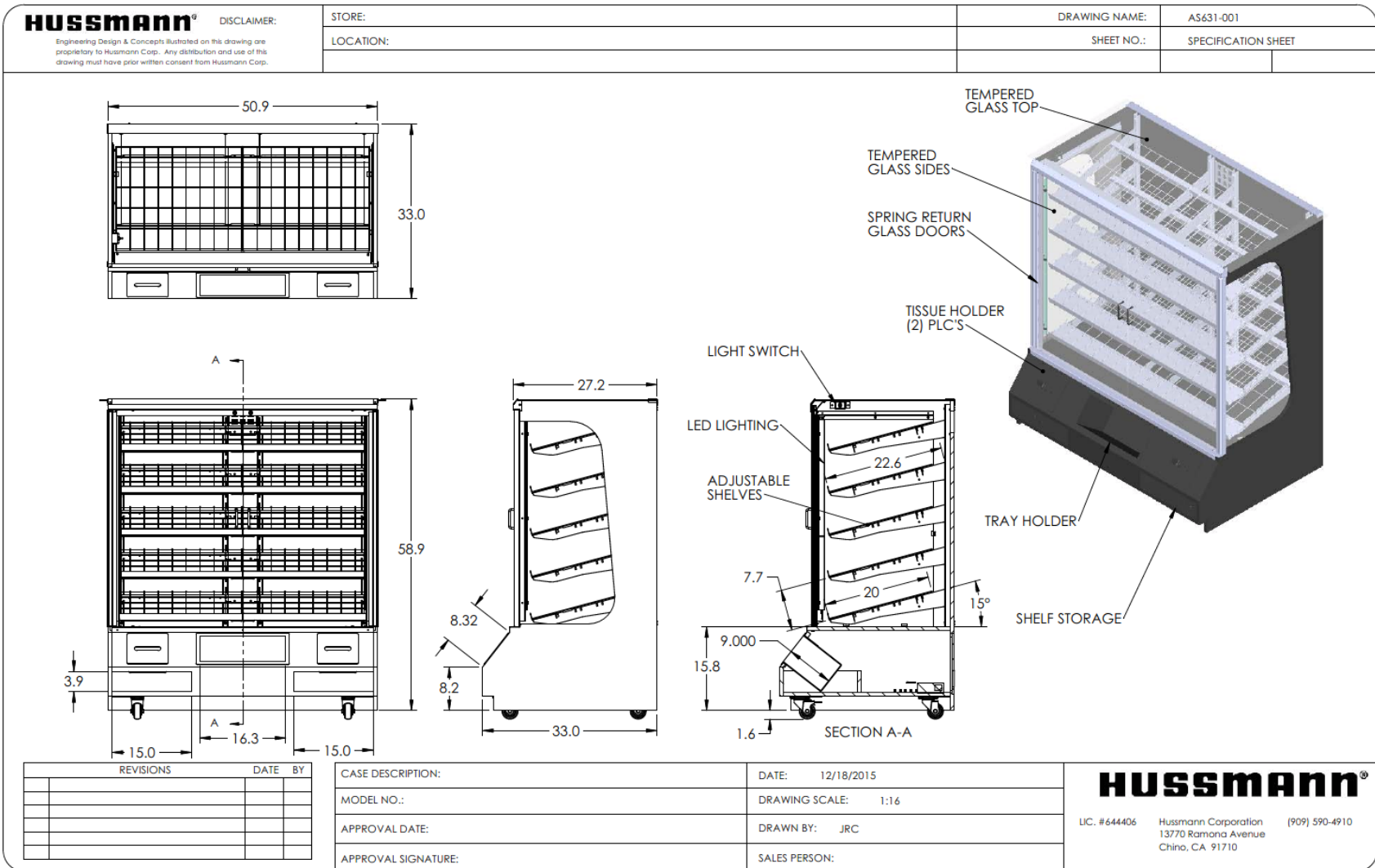




- Customer Required Unique Size for Store Layout
- Custom Designed, Produced and Delivered in Six Weeks.
- Great Product Visibility
- Clean ledge options
- 4 – 6 week lead time
- Price Range \$3,500 to \$4,000

"SF" Series Ambient Pastry Solutions

HUSSmann®

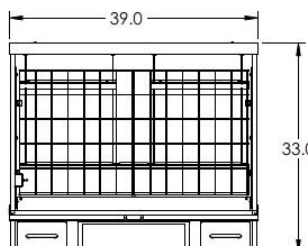


SF Pastry Case 51"W x 33"D x 58-3/4"H

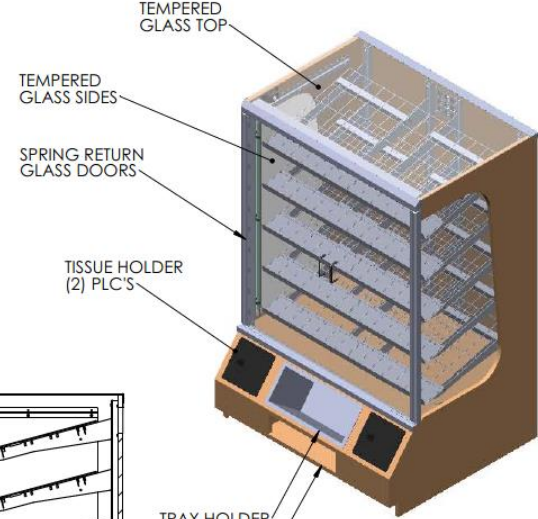
"SF" Series Ambient Pastry Solutions

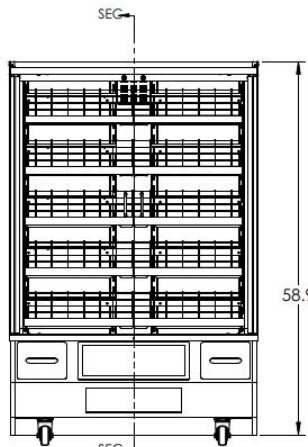
HUSSmann®

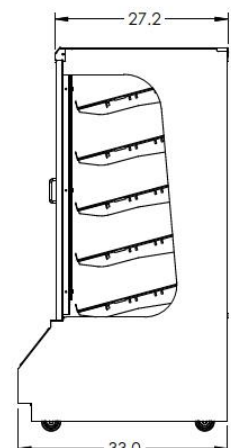
HUSSmann® <small>Engineering Design & Concepts illustrated on this drawing are proprietary to Hussmann Corp.. Any distribution and use of this drawing must have prior written consent from Hussmann Corp.</small>	STORE:	DRAWING NAME:	AS631-075
	LOCATION:	SHEET NO.:	SPECIFICATION SHEET

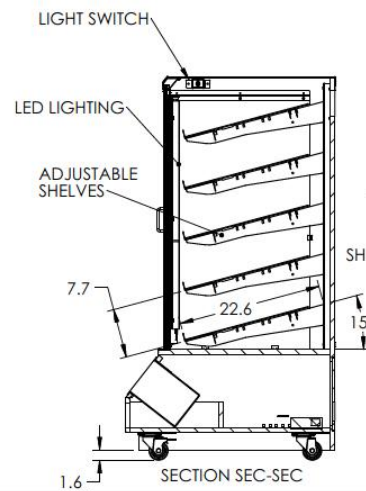


ELECTRICAL SPEC'S LED LIGHTS			
VOLTS	PHASE	HERTZ	AMP
120	1	60	0.30









<table border="1" style="width: 100%; border-collapse: collapse;"> <thead> <tr> <th>REVISIONS</th> <th>DATE</th> <th>BY</th> </tr> </thead> <tbody> <tr><td> </td><td> </td><td> </td></tr> <tr><td> </td><td> </td><td> </td></tr> <tr><td> </td><td> </td><td> </td></tr> <tr><td> </td><td> </td><td> </td></tr> </tbody> </table>	REVISIONS	DATE	BY													<table border="1" style="width: 100%; border-collapse: collapse;"> <tr> <td style="width: 50%;">CASE DESCRIPTION: 39" PASTRY CASE</td> <td style="width: 50%;">DATE: 12/15/2015</td> </tr> <tr> <td>MODEL NO.:</td> <td>DRAWING SCALE: 1:16</td> </tr> <tr> <td>APPROVAL DATE:</td> <td>DRAWN BY: JRC</td> </tr> <tr> <td>APPROVAL SIGNATURE:</td> <td>SALES PERSON:</td> </tr> </table>	CASE DESCRIPTION: 39" PASTRY CASE	DATE: 12/15/2015	MODEL NO.:	DRAWING SCALE: 1:16	APPROVAL DATE:	DRAWN BY: JRC	APPROVAL SIGNATURE:	SALES PERSON:	HUSSmann® <small>LIC. #644406 Hussmann Corporation 13770 Ramona Avenue Chino, CA 91710 (909) 590-4910</small>
REVISIONS	DATE	BY																							
CASE DESCRIPTION: 39" PASTRY CASE	DATE: 12/15/2015																								
MODEL NO.:	DRAWING SCALE: 1:16																								
APPROVAL DATE:	DRAWN BY: JRC																								
APPROVAL SIGNATURE:	SALES PERSON:																								

SF Pastry Case 39"W x 33"D x 58-3/4"H

"SF" Series Ambient Pastry Solutions

HUSSmann®

HUSSmann®

DISCLAIMER:
Engineering Design & Concepts illustrated on this drawing are proprietary to Hussmann Corp. Any distribution and use of this drawing must have prior written consent from Hussmann Corp.

STORE: CASEY'S GENERAL STORES

LOCATION:

DRAWING NAME: AS631-430R2

SHEET NO.: 1

Electrical Specs			
Volts	Phase	Hertz	Amps
120	1	60	0.5

54.0

28.0

38.0

SECTION B-B

LED LIGHTING AT CANOPY

6.6

32.00

52.0

A

LED LIGHTING PER SHELF

20°

7.7

15°

58.8

27.8

19.9

2.7

1.625

15.4

SECTION A-A

FLY DETERANT

Clear Glass Top

Clear Glass Sides

Adjustable Shelves

SLIDING DOORS (2) SHELF BEHIND DOOR

Packaging Area

Tissue Box at each Side

Self Closing Torsion Spring Doors

REVISIONS

DATE

BY

△

△

△

△

CASE DESCRIPTION: PASTRY CASE 54" W X 38" D X 58.8" H

DATE: 12/8/2015

MODEL NO.:

DRAWING SCALE: 1:18

APPROVAL DATE:

DRAWN BY: JRC

APPROVAL SIGNATURE:

SALES PERSON:

HUSSmann®

LIC. #644406 Hussmann Corporation 13770 Ramona Avenue Chino, CA 91710 (909) 590-4910

SF Pastry Case 54"W x 38"D x 58-3/4"H

HUSSMANN® DISCLAIMER:

Engineering Design & Concepts illustrated on this drawing are proprietary to Hussmann Corp. Any distribution and use of this drawing must have prior written consent from Hussmann Corp.

STORE:

LOCATION:

CONCEPT ONLY

DRAWING NAME:

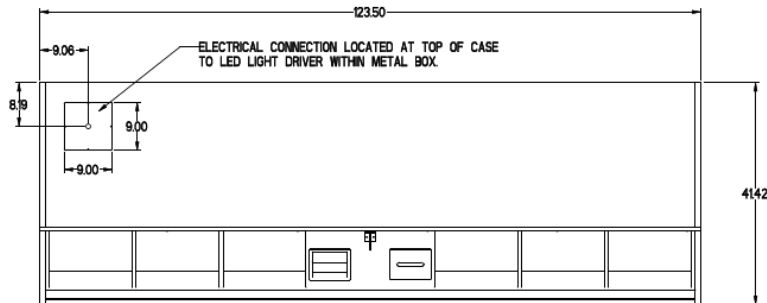
031632-01

SHEET NO.:

1 OF 1

REVISION LEVEL:

06



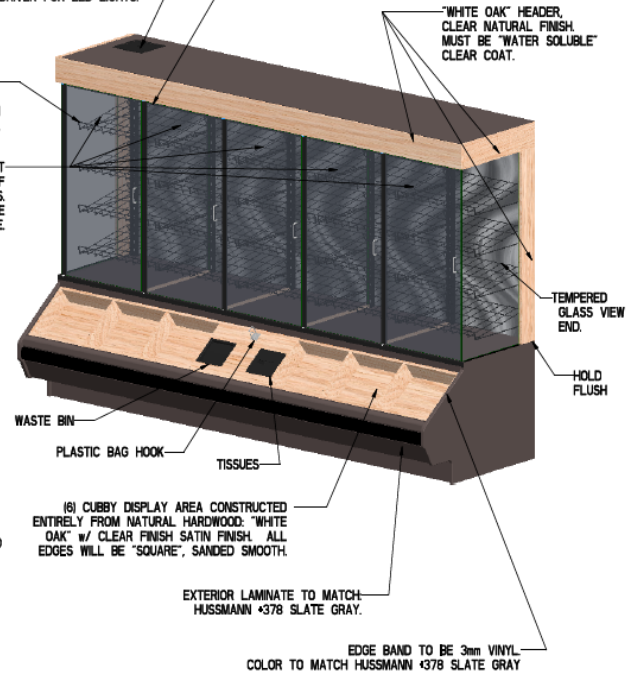
ELECTRICAL SPECS:			
Volts	Phase	Hertz	Amps
120	1	60	.50

TOP ELECTRIC CONNECTION TO DRIVER FOR LED LIGHTS.

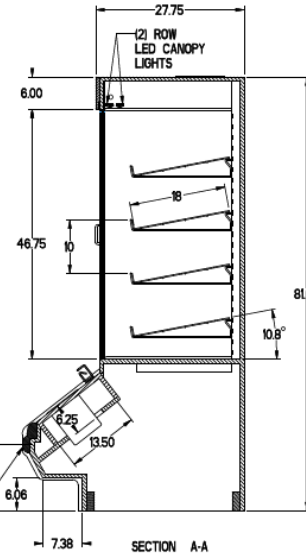
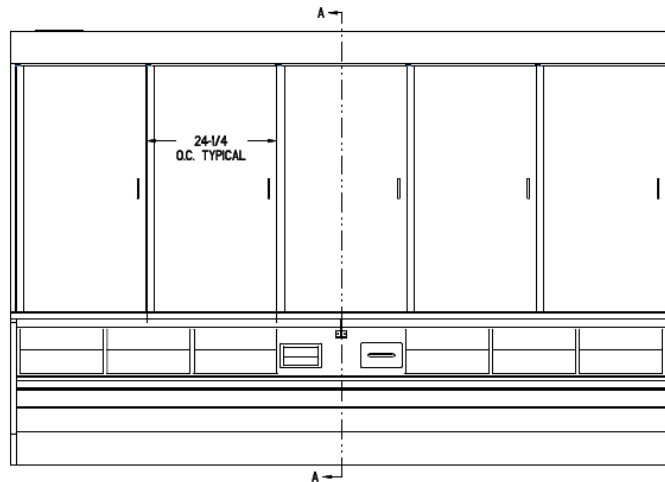
CLEAR MIRROR BACK BETWEEN EACH UPRIGHT.

(20) TOTAL WIRE SHELVES. ADJUSTABLE ON 2" INCREMENTS. BLACK POWDER COATED FINISH (FDA APPROVED).

(5) TEMPERED GLASS DOORS AT EACH DIVIDED SHELF. SELF CLOSING TORSION SPRING HINGES. TEMPERED GLASS DIVIDERS ARE REMOVABLE.



NOTES:
MILLWORK DISPLAY CASE CONSTRUCTED OF 3/4" PLYWOOD WITH HIGH PRESSURE LAMINATE FINISH. EXTERIOR FINISH TO MATCH HUSSMANN #378 SLATE GRAY. FRONT BUMPER & BODY WORK TO MATCH HUSSMANN "ISLA" DETAIL.



FRONT BODY WORK TO MATCH HUSSMANN "ISLA"

SECTION A-A

REVISIONS	DATE	BY
1 REVISED EXTERIOR DECOR, ISLA MATCH	4/6/15	ART S.
2 Streamline exterior decor, add finishes		
3 Add doors on each divided section	4/27/15	Art S.
4 ADD OAK TO ENDS, ASSURE FLUSH CONSTRUCTION	4/28/15	Art S.
5 ADD TOP ELECT ACCESS, SQ EDGES ON OAK	5/22/15	ART S.
6 REVISE KICK BASE DIMENSIONS	6/2/15	ART S.

CASE DESCRIPTION: DONUT-BAGEL-BREAD WALLCASE 10'

DATE: 3/9/15 (REV. 6/2/15)

MODEL NO.: DN031632.010000

DRAWING SCALE: 0.050

APPROVAL DATE:

DRAWN BY: ART S.

APPROVAL SIGNATURE:


SALES PERSON:

HUSSMANN®

LIC. #644406 Hussmann Corporation (809) 590-4990
13770 Ramona Avenue
Chino, CA 91702


New Bakery Pastry Case Custom Designs


STORE: SpartanNash LOCATION:	SHEET 1 OF 1
---------------------------------	--------------



**ALIGNMENT WITH VR3HV REFRIGERATED
BAKERY CASE, SERVICE OVER SELF-SERVICE**

REVISIONS	DATE	BY	CASE DESCRIPTION: 10' INLINE PASTRY-BREAD O/U HUSSMANN PLUS MODEL#: DN031657.010000	DATE: 12/15/15 SCALE: NTS DRAWN BY: ART S. SALES PERSON: FELIX C.





LIC. #64406 Husmann Corporation (909) 590-4910
 13770 Ramona Avenue
 Chino, CA 91710

New Bakery Pastry Case Custom Designs



New Bakery Pastry Case Custom Designs



- Portfolio Compliment
- Easily Customizable
- Color Options Available
- Lead time 4 – 6 Weeks
- Price Point - \$1500 to \$2200



12 BAY A-FRAME WINE DISPLAY (3H x 2W) #DN031637.010000

HUSSmann®

Art Short, Jr.
Technical Sales Specialist

HUSSmann®
SPECIALTY PRODUCTS

Home office:
Grove City, Ohio 43123
Phn: 614-551-4797
Email: art.short@hussmann.com
www.hussmann.com

Corp. office:
12999 St. Charles Rock rd.
Bridgeton, MO. 63044



Series of different sized tables that can be configured to make numerous floral displays

Allows for maximum flexibility of DISPLAY with minimum number of SKU's

Program Roll Out Support

Lead times 4 – 6 weeks

Pricing based on configurations selected

HUSSmann® DISCLAIMER:
Engineering Design & Concepts illustrated on this drawing are proprietary to Hussmann Corp. Any distribution and use of this drawing must have prior written consent from Hussmann Corp.

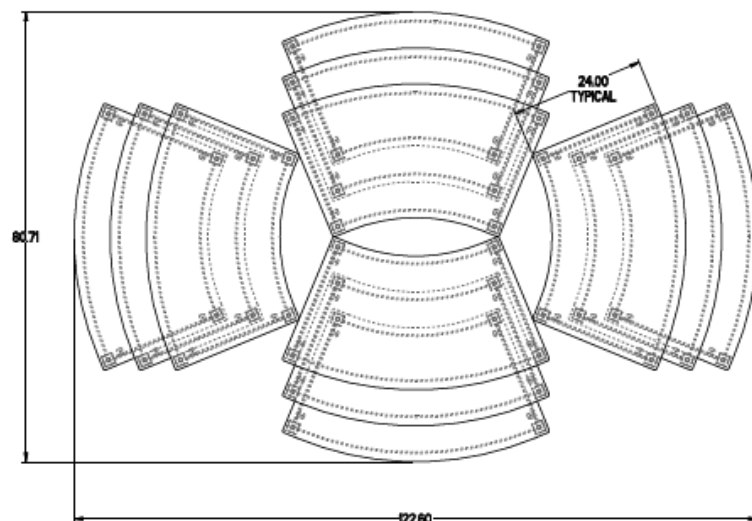
STORE: KIT # 027688.OA.BS.00

LOCATION:

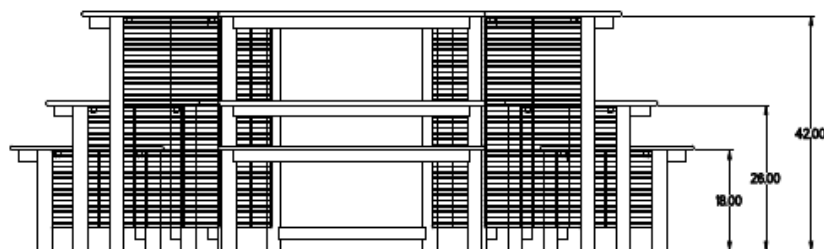
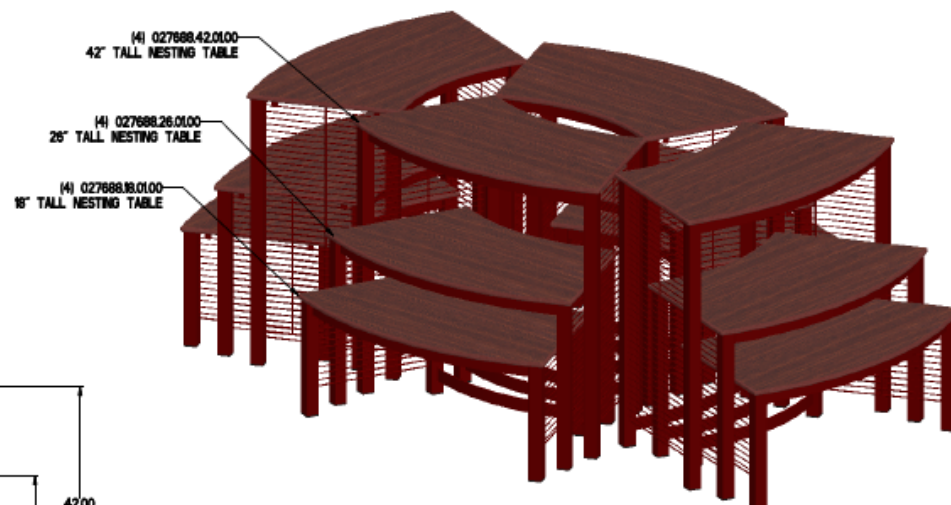
DRAWING NAME: 027688-OA-B5-00

SHEET NO: 1 OF 1

REVISION LEVEL: 01



BLOOMING SECTION TABLE KIT-A



REVISIONS	DATE	BY
1		
2		
3		
4		

CASE DESCRIPTION: BLOOMING SECTION TABLE KIT-A

MODEL NO: 027688.OA.BS.00

APPROVAL DATE:

APPROVAL SIGNATURE:

DATE: 4/22/15

DRAWING SCALE: 0.050

DRAWN BY: ART S.

SALES PERSON:

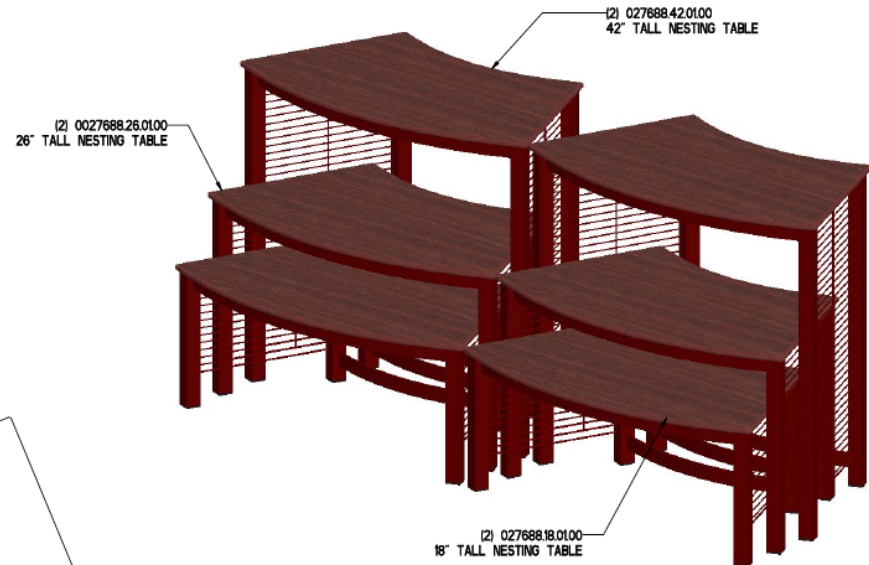
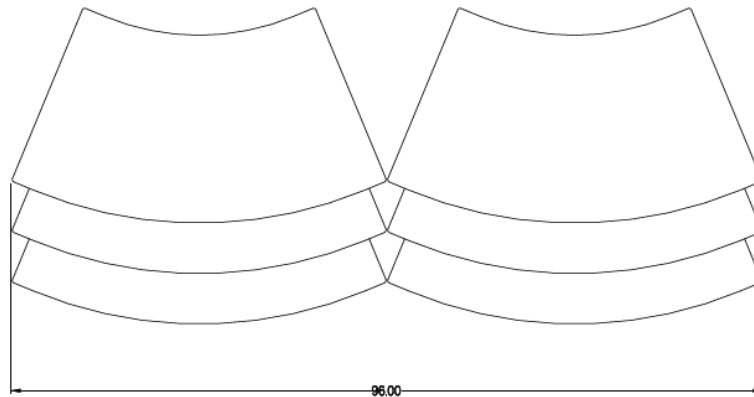
HUSSmann®

LIC. #644406 Hussmann Corporation (909) 590-4910
13770 Revere Avenue
Chino, CA 91710

HUSSmann® DISCLAIMER:
Engineering Design & Concepts illustrated on this drawing are
proprietary to Hussmann Corp. Any distribution and use of this
drawing must have prior written consent from Hussmann Corp.

STORE:	KIT # 027688.OA.08.18	DRAWING NAME:	027688-OA-08-18
LOCATION:		SHEET NO.:	1 OF 1
		REVISION LEVEL:	01

RADIUS NEST TABLE KIT 8' & 18"



REVISIONS	DATE	BY
⚠		
⚠		
⚠		
⚠		
⚠		

CASE DESCRIPTION:	RADIUS NESTING TABLE KIT 8' & 18"	DATE:	4/22/15
MODEL NO.:	027688.OA.08.18	DRAWING SCALE:	0.070
APPROVAL DATE:		DRAWN BY:	ART S.
APPROVAL SIGNATURE:		SALES PERSON:	

HUSSmann®
LIC. #644406 Hussmann Corporation (909) 590-4910
13770 Ramona Avenue
Chino, CA 91710



- Maximum Product Display
- Unique Design
- Lead Time 4 – 6 Weeks
- Pricing \$1900 to \$2500





- Recent Portfolio Addition
- Process to support needs
- Maximum Product Visibility
- Plug and Play unit
- Lead Time - 4 – 6 Weeks
- Price Point - \$1600 - \$1800

HUSSmann®

DISCLAIMER:
Engineering Design & Concepts illustrated on this drawing are proprietary to Hussmann Corp. Any distribution and use of this drawing must have prior written consent from Hussmann Corp.

STORE: CASEY'S GENERAL STORES

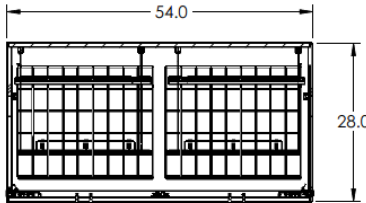
LOCATION:

DRAWING NAME: AS631-140

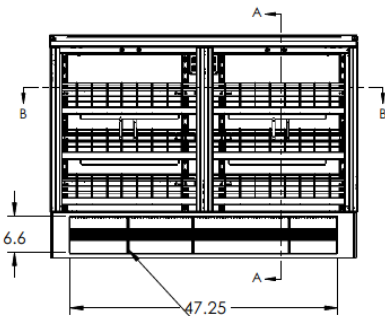
SHEET NO.: 1

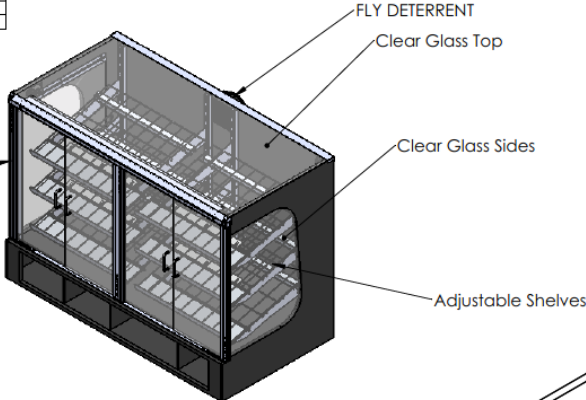
Electrical Specs			
Volts	Phase	Hertz	Amps
120	1	60	0.9

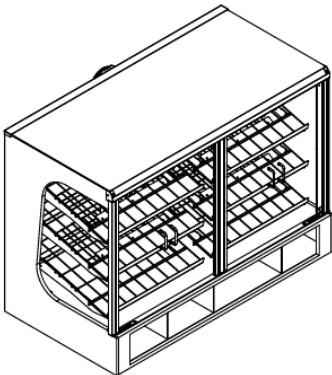
SECTION B-B



SECTION A-A







LED LIGHTING AT CANOPY

LED LIGHTING PER SHELF

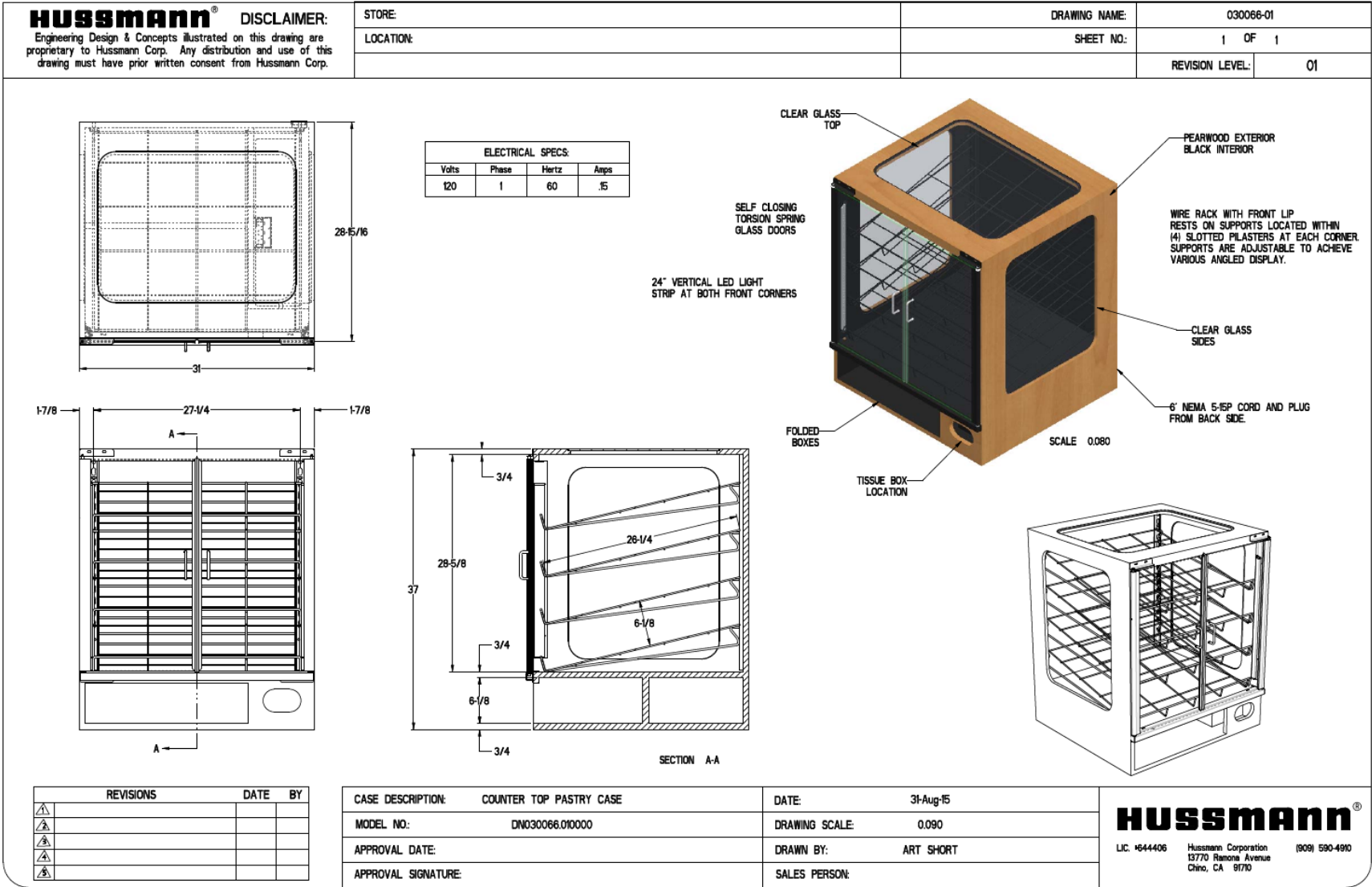
THREE ADJUSTABLE SHELF DIVIDERS WITH BINING STRIPS TOP AND BACK

REVISIONS	DATE	BY

CASE DESCRIPTION: COUNTER TOP PASTRY CASE 4 DOOR	DATE: 12/15/2015
MODEL NO.:	DRAWING SCALE: 1:18
APPROVAL DATE:	DRAWN BY: JRC
APPROVAL SIGNATURE:	SALES PERSON:

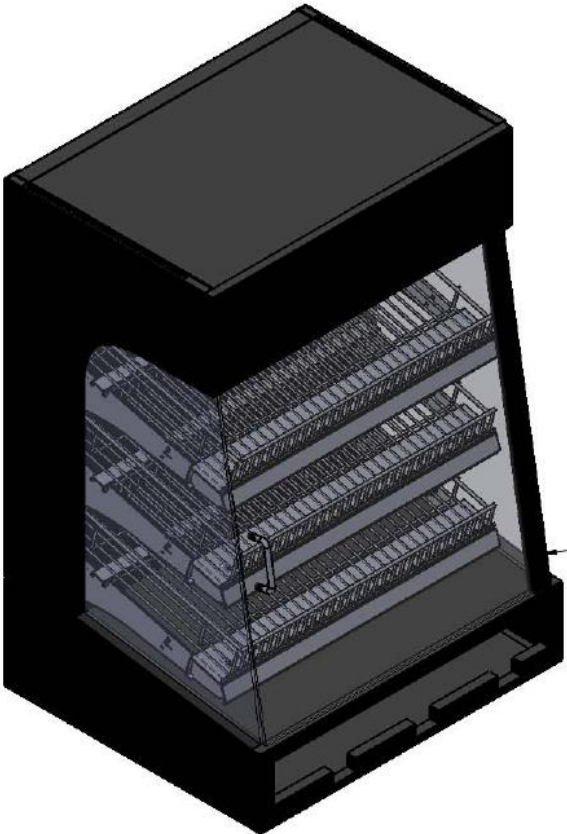
HUSSmann®

LIC. #644406 Hussmann Corporation 13770 Ramona Avenue Chino, CA 91710 (909) 590-4910



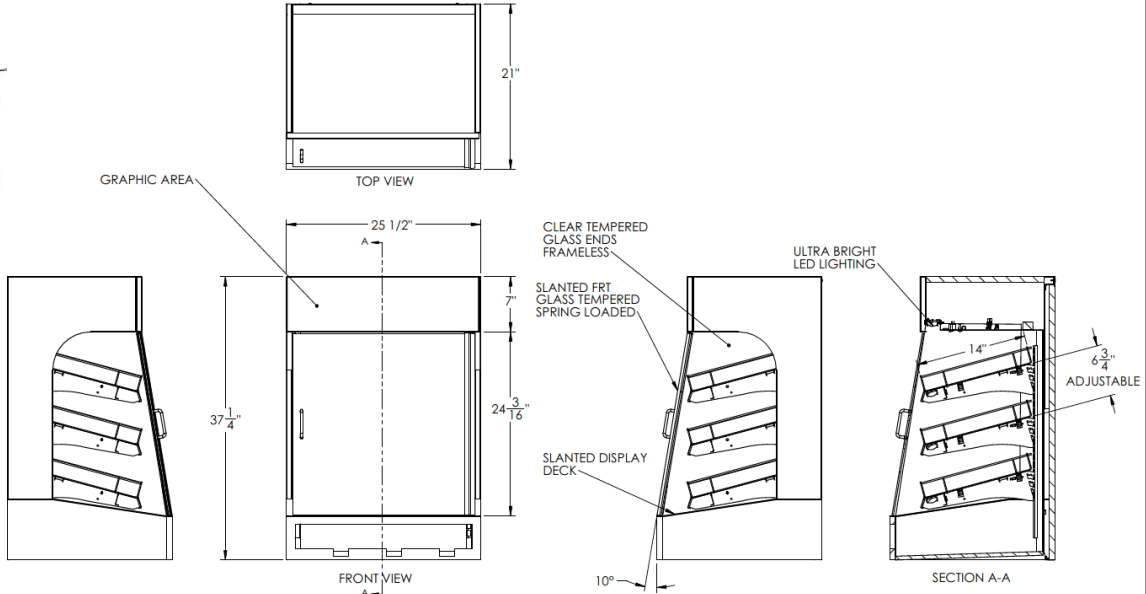
Counter Topper “CT” Displays

HUSSMANN®



mann® DISCLAIMER:
Sign & Concepts illustrated on this drawing are
Husmann Corp. Any distribution and use of this
drawing without consent from Husmann Corp.

STORE:	DRAWING NAME:	AS636-003
LOCATION:	SHEET NO.:	2



REVISIONS	DATE	BY

CASE DESCRIPTION:	25.5" X 21" SELF SERVICE COUNTER TOP PASTRY CASE	DATE:	8/28/2015
MODEL NO.:	DN031643.010000	DRAWING SCALE:	1:10
APPROVAL DATE:		DRAWN BY:	MRS
APPROVAL SIGNATURE:		SALES PERSON:	

HUSSMANN®	
U.C. #644406	Husmann Corporation 13770 Romona Avenue Chino, CA 91710
(909) 590-4910	



- Portfolio Compliment
- On Casters – Mobile Unit
- Plug and Play Versatility
- Hatco Heater – Reliability
- Lead Time – 4 to 6 weeks
- Price Range - \$6500





“Bi Temp Unit – Ambient Service Top/Refrigerated Self Service Bottom



Spot Merchandiser Unit
In Final Validation Testing

