

STC series

INDUSTRIAL EVAPORATOR

engineering data
and specifications



EFFICIENT COIL DESIGN

Tubes are 3/4 inch OD staggered in the direction of air flow.

Turbo-spacers located between tubes provide nominal three, four or six fins per inch spacing and improves fin efficiency by turbulating air flow.

MATERIALS OF COIL CONSTRUCTION

- Type 304L stainless steel tubes and aluminum fins. Tubing meets the requirements of ASM B31.5 Refrigerant Piping Code.
- Aluminum tubes and fins.
- Copper tubes and aluminum fins.
- Carbon steel tubes and fins, hot dip galvanized after fabrication.
- Each coil is tested under water with 350 psig air.
- For maximum efficiency each coil is tailor made for its intended duty with the following features:
 - Recirculated coils have graduated liquid feed orifices to balance static head and reduce hot gas blowby during defrost.
 - Direct expansion coils are circuited to have appropriate pressure drop and maintain refrigerant velocity for oil return.
 - Flooded coils are circuited to minimize internal loses while maintaining minimum surge drum operating level.
 - Water, brine or glycol systems are circuited to minimize fluid pressure drop and maintain a desired velocity.
- Coil variations available include:
 - Fully coated coil with Epoxy Electro-Fin or Heresite (aluminum fin coils only). Corrosion resistant gold epoxy pre-coated aluminum fin.
 - Stainless steel and aluminum tube coils provided with carbon steel connection stubs.
 - All coils shipped with a dry nitrogen charge.

DRAIN PAN CONSTRUCTION

- Standard drain pan is aluminum for Air, HGC, ED, and Water defrosts units.
- Optional CFC Free insulated, mill galvanized cover available for Air, HGC, and ED units.
- Hot gas drain pan is stainless steel with tube style configuration. Includes an insulated, mill galvanized cover.
- EDL units use an aluminum drain pan with an insulated, mill galvanized cover..

HEAVY DUTY HOUSING CONSTRUCTION

- Housings are mill galvanized steel for long life and maximum strength.
- Features include:
 - Deep spun orifices ensure optimum fan performance.
 - Individually compartmented fans prevent reverse fan rotation.
 - Solid base motor mount to secure heavy, higher horsepower, higher speed motors.
 - Header and return bend ends left open for ease of unit installation and operation observation.

EFFICIENT FANS

- All fans are selected for maximum efficiency with non-overloading performance.
- Selections are given for 870 and 1160 RPM operation.
- Fan guards are PVC coated for long life.

*ElectroFin® is a registered trademark of Modine, Racine, WI

**Heresite® is a registered trademark of Hersite Protective Coatings, LLC, Manitowoc, WI

HEAVY DUTY MOTORS

- Standard motors are TEFC lubricated for -40° F ambient operating at 870 or 1160 RPM.
- 1/3 hp - 3/4 hp 870 RPM includes ATO. 1/3 hp - 1 hp 1160 RPM can include thermal overload in motor.
- All motors are VFD rated.
- All motors wired to terminal block(s) in a common NEMA 4 junction box on the opposite end as the refrigerant connections. ATO motors will be wired to a single terminal block while non-ATO motors are wired to individual terminal blocks.

AIR DEFROST

above 36°F room temperature

Units should be selected at low face velocity using the ratings on the capacity data tables to prevent moisture carryover.

- Drain pans are aluminum for long life and corrosion protection.
- CFC-free closed cell insulation and mill galvanized steel covers are optional

HOT GAS DEFROST UNIT

below 32°F room temperature

- Tube style stainless steel drain pans allow for fast hot gas defrost.
- Drain pans include CFC-free closed cell insulation with mill galvanized steel covers.
- Interconnecting piping and check valve between the drain pans and coils are factory installed.

HOT GAS DEFROST COIL ONLY

above 33°F room temperature

- Hot gas defrost for the coil with unheated aluminum drain pans.
- Optional CFC-free closed cell insulation with mill galvanized steel covers are available.

WATER DEFROST

to -20°F room temperature

- Water distribution pans are mounted above each coil section providing full coverage of the entire finned surface. Inlet water temperature should not exceed 60°F. Water pans are removable from the coil side of the unit. Overall height is increased 5".
- Drain pans are aluminum for long life and furnished with oversized horizontal drain connections.

FAN DISCHARGE OPTIONS

- Blow through, horizontal discharge is standard.
- Draw through, vertical down discharge is available for unique cooling applications.

MOTOR CONTROL OPTION

- Individual motor non-fused disconnect or manual motor starters, factory wired, can be provided as a local disconnect means.

SPECIAL MOTORS

- Wash-down duty motors.
- Stainless steel exterior finished motors.
- EC motors for certain size hp and RPM.

FAN CABINET OPTIONS

- Stainless steel construction.
- Stainless steel fan guard.

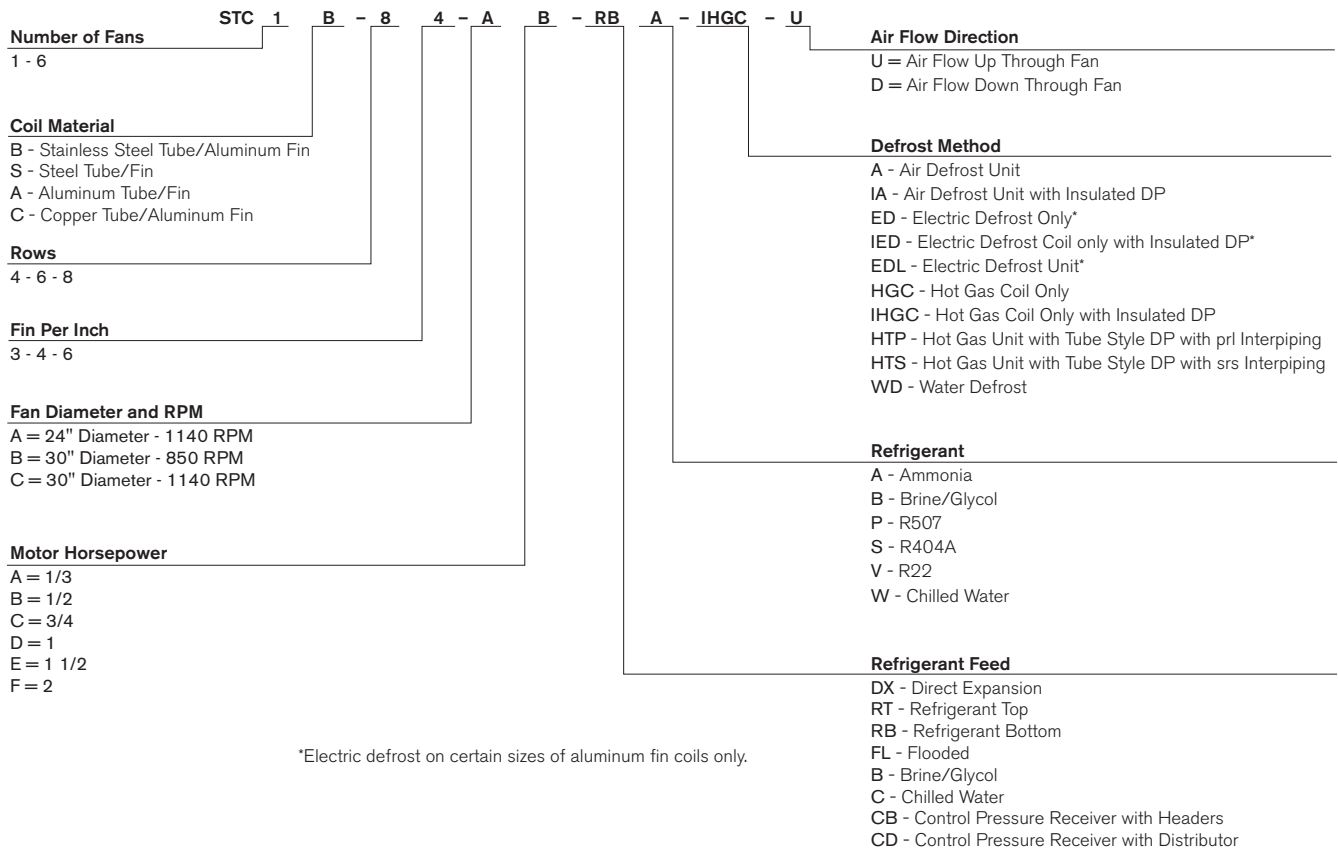
CONTROL PANEL OPTIONS

- A factory mounted control panel with fused disconnect and fan motor contactor or starters all factory wired is available. This allows for reduced field installation costs since only one electrical connection is required per unit. Panels carry a UL stamp for industrial control panels.
- The standard enclosure is rated NEMA 4.
- Multiple motors can be wired to run together or individually.
- Transformer to provide contactor voltage, controlled by others. Transformer can be eliminated, contactor voltage then supplied by others.

DRAIN PAN OPTIONS

- Optional construction with stainless steel for the pans and/or insulated pan covers.
- Electric heating available on the interior of the drain pan covers. (115/1/60 or 230/1/60)

STC Model Key



External Motor Protection is required in all three phases. Overloads should be sized with allowance for 1.15 service factor and cold air density. Multiply nameplate FLA by 1.15" 0°F, 1.1" -10° F and 1.2" -20°F spaces to correct for air density. A motor's ability to dissipate heat in cold ambients increases at a faster rate than the resultant increase in horsepower.

Capacity Corrections Factors

Multiply Rated Capacity by Factors

| Rating Variation | Rows Deep | | | Factory Corrects Rating for |
|-----------------------------|-----------|------|------|-----------------------------|
| | 4 | 6 | 8 | |
| Wet Coil to 32° F SST | 1.73 | 1.12 | 1.10 | 3,4 or 6 FPI |
| Ammonia TEV to 0°F SST | 0.75 | 0.83 | 0.84 | 3,4 or 6 FPI |
| Halocarbon TEV to -20°F SST | 0.65 | 0.73 | 0.76 | 3,4 or 6 FPI |
| Halocarbon TEV to -30°F SST | 0.59 | 0.66 | 0.68 | 3 or 4 FPI |
| Halocarbon TEV to -40°F SST | 0.52 | 0.58 | 0.60 | 3 or 4 FPI |
| Steel HDG Recirculation/FL | 0.87 | 0.88 | 0.90 | 3,4 or 6 FPI |

Motor AMPS

| Horsepower | RPM | 230/3/360 | 460/3/60 | 575/3/60 |
|------------|------|-----------|----------|----------|
| .33 | 1160 | 1.8 | 0.9 | 0.72 |
| .50 | 850 | 4.0 | 2.0 | 1.30 |
| .50 | 1160 | 2.4 | 1.2 | 1.00 |
| .75 | 850 | 4.2 | 2.1 | 1.60 |
| .75 | 1160 | 3.0 | 1.5 | 1.20 |
| 1.0 | 850 | 4.6 | 2.3 | 1.78 |
| 1.0 | 1160 | 3.6 | 1.8 | 1.40 |
| 1.5 | 850 | 6.0 | 3.0 | 2.40 |
| 1.5 | 1160 | 4.8 | 2.4 | 1.90 |
| 2.0 | 1160 | 7.0 | 3.5 | 2.80 |

REFRIGERANT FEEDS

DX— Direct expansion employs a distributor and capillaries to feed each circuit. TEV must be externally equalized. Electronic TEV feeds are recommended below 0° F SST or with TD selections less than 12° F. Remove discharge tubes from ammonia TEV. The distributor is orificed. Sub-cooled liquid must be specified as circuits may be reduced for rated performance.

DX-HG—Direct expansion hot gas defrost models utilize a side ported distributor, a bypass tee between TEV and distributor, or bypass header for halocarbons. Ammonia requires a bypass header.

Recirculated Liquid Overfeed Systems usually supply liquid refrigerant at SST. Warmer liquid feeds must be specified. Liquid ammonia must be no more than 30° F above SST.

RT—Recirculated top feed is recommended for air, water, or electric defrost. Refrigerant and oil flows downhill to the suction header.

RB—Recirculated bottom feed is recommended for hot gas defrost. Hot gas enters the suction thru customer's connection. Condensate and oil flow downhill, back-flowing the liquid feed orifices which restrict gas blow-by. Condensate is relieved thru customer's tee located between coil and balancing valve. Defrost condensate relief devices must be located below the liquid connection.

FL—Flooded feeds utilize surge drums with liquid level control. When close coupled, liquid level in drum should be four inches or more above coil. Gas/liquid separation velocities are based on condenser pressure liquid feed. Smaller vessels can be used when liquid is sub-cooled and when hot gas defrost condensate is relieved to other than the drum. Contact factory for surge drum selections.

AIR THROW

For 870 rpm motors, air throw is 40 to 50 ft from sides. For 1160 rpm motors, air throw is 60 to 70 ft from sides. When throwing down long aisles, air throw will increase substantially.

UNIT LOCATION

Unit must be located to provide good air circulation to all areas. Space around the unit should allow for free airflow into and out of the unit. Light fixtures, shelving, ceiling structures, and product boxes must be located so that they do not block the air discharge from the unit. On all units a space should be provided for the possible future replacement of the electric defrost heaters if heaters have been furnished.

PIPING

Weight of piping, controls, etc. should be carried by proper pipe supports. Steel suction lines on TEV fed ammonia units should be downsized at the unit and then trapped. The undersized riser should enter the top of a suction.

HOT GAS DEFROST

During hot gas defrost, an evaporator coil can condense at 3 to 4 times its rated cooling capacity. Liquid condensate must be allowed to leave the coil or defrost will be retarded by lack of flow. Defrost condensate relief lines must be connected to the bottom of RT or DX suction lines or traps and to the bottom of RB or FLA liquid lines. Do not back-flow condensate thru hand expansion valves as the orifice will restrict defrost. Defrost relief regulators must be located below the liquid or suction connections. Do not lift refrigerant condensate because defrost of the bottom of the coil will be retarded. When the defrost relief is piped in a fourth pipe to the system intercooler or controlled pressure receiver, the defrost relief regulator may require oversizing because its pressure differential is lower. With multiple evaporators, each is provided with a defrost relief check valve and the regulator is in the common header. The regulator and the common defrost relief header must be sized for the maximum number of units being defrosted at one time.

DRAIN LINES

Each unit must have a trap (heated when necessary) in the water drain line from each pan.

Sound Ratings (dB A Scale) measured 6'-0 from fans

| Number of Fans | Fan Diameter 24" | Fan Diameter 30" | |
|----------------|------------------|------------------|----------|
| | 1160 RPM | 870 RPM | 1160 RPM |
| 1 | 68-72 | 72-75 | 80-82 |
| 2 | 71-74 | 73-77 | 83-85 |
| 3 | 73-76 | 75-77 | 86-88 |
| 4 | 74-77 | 77-81 | 88-91 |
| 5 | 75-78 | 78-82 | 90-92 |
| 6 | 77-80 | 80-83 | 91-93 |

24" Diameter 1140 RPM – One Fan Unit

| Model | Wet BTUh/TD | Frosted BTUh/TD | Fan hp | Rows | FPI | Face Area sq ft | Coil Volume cu ft | Surface sq ft | CFM | Face Velocity FPM | Stainless Weight lb |
|------------|----------------|--------------------|--------|------|-----|--------------------|----------------------|------------------|------|----------------------|------------------------|
| STC1-43-AA | 1921 | 1715 | 1/3 | 4 | 3 | 7.1 | 1.3 | 340 | 3900 | 551 | 580 |
| STC1-63-AA | 2618 | 2338 | 1/3 | 6 | 3 | 7.1 | 1.5 | 510 | 3700 | 522 | 650 |
| STC1-83-AA | 3099 | 2817 | 1/3 | 8 | 3 | 7.1 | 1.8 | 680 | 3550 | 501 | 710 |
| STC1-44-AA | 2432 | 2171 | 1/3 | 4 | 4 | 7.1 | 1.3 | 420 | 3850 | 544 | 600 |
| STC1-64-AA | 3096 | 2764 | 1/3 | 6 | 4 | 7.1 | 1.5 | 631 | 3650 | 515 | 670 |
| STC1-84-AA | 3393 | 3085 | 1/3 | 8 | 4 | 7.1 | 1.8 | 841 | 3400 | 480 | 730 |
| STC1-46-AA | 2797 | | 1/3 | 4 | 6 | 7.1 | 1.3 | 587 | 3750 | 529 | 620 |
| STC1-66-AA | 3561 | | 1/3 | 6 | 6 | 7.1 | 1.5 | 881 | 3500 | 494 | 700 |
| STC1-86-AA | 3902 | | 1/3 | 8 | 6 | 7.1 | 1.8 | 1174 | 3250 | 459 | 790 |
| STC1-43-AB | | 2091 | 1/2 | 4 | 3 | 7.1 | 1.3 | 340 | 4840 | 683 | 580 |
| STC1-63-AB | | 2684 | 1/2 | 6 | 3 | 7.1 | 1.5 | 510 | 4550 | 642 | 650 |
| STC1-83-AB | 3412 | 3101 | 1/2 | 8 | 3 | 7.1 | 1.8 | 680 | 4100 | 579 | 710 |
| STC1-44-AB | | 2438 | 1/2 | 4 | 4 | 7.1 | 1.3 | 420 | 4600 | 649 | 600 |
| STC1-64-AB | 3319 | 2964 | 1/2 | 6 | 4 | 7.1 | 1.5 | 631 | 4250 | 600 | 670 |
| STC1-84-AB | 3784 | 3440 | 1/2 | 8 | 4 | 7.1 | 1.8 | 841 | 4000 | 565 | 730 |
| STC1-66-AB | 3817 | | 1/2 | 6 | 6 | 7.1 | 1.5 | 881 | 4150 | 586 | 700 |
| STC1-86-AB | 4352 | | 1/2 | 8 | 6 | 7.1 | 1.8 | 1174 | 3750 | 529 | 790 |
| STC1-43-AC | | 2130 | 3/4 | 4 | 3 | 7.1 | 1.3 | 340 | 5300 | 748 | 580 |
| STC1-63-AC | | 2738 | 3/4 | 6 | 3 | 7.1 | 1.5 | 510 | 4900 | 692 | 650 |
| STC1-83-AC | | 3301 | 3/4 | 8 | 3 | 7.1 | 1.8 | 680 | 4600 | 649 | 710 |
| STC1-44-AC | | 2594 | 3/4 | 4 | 4 | 7.1 | 1.3 | 420 | 5200 | 734 | 600 |
| STC1-64-AC | | 3132 | 3/4 | 6 | 4 | 7.1 | 1.5 | 631 | 4800 | 678 | 670 |
| STC1-84-AC | | 3659 | 3/4 | 8 | 4 | 7.1 | 1.8 | 841 | 4450 | 628 | 730 |
| STC1-43-AD | | 2284 | 1 | 4 | 3 | 7.1 | 1.3 | 340 | 5850 | 826 | 580 |
| STC1-63-AD | | 2865 | 1 | 6 | 3 | 7.1 | 1.5 | 510 | 5350 | 755 | 650 |
| STC1-83-AD | | 3432 | 1 | 8 | 3 | 7.1 | 1.8 | 680 | 4950 | 699 | 710 |
| STC1-44-AD | | 2763 | 1 | 4 | 4 | 7.1 | 1.3 | 420 | 5700 | 805 | 600 |
| STC1-64-AD | | 3267 | 1 | 6 | 4 | 7.1 | 1.5 | 631 | 5200 | 734 | 670 |
| STC1-84-AD | | 3816 | 1 | 8 | 4 | 7.1 | 1.8 | 841 | 4800 | 678 | 730 |
| STC1-63-AE | | 3043 | 1 1/2 | 6 | 3 | 7.1 | 1.5 | 510 | 6000 | 847 | 650 |
| STC1-83-AE | | 3639 | 1 1/2 | 8 | 3 | 7.1 | 1.8 | 680 | 5500 | 777 | 710 |
| STC1-44-AE | | 2982 | 1 1/2 | 4 | 4 | 7.1 | 1.3 | 420 | 6400 | 904 | 600 |
| STC1-64-AE | | 3476 | 1 1/2 | 6 | 4 | 7.1 | 1.5 | 631 | 5800 | 819 | 670 |
| STC1-84-AE | | 3994 | 1 1/2 | 8 | 4 | 7.1 | 1.8 | 841 | 5200 | 734 | 730 |

24" Diameter 1140 RPM – Two Fan Unit

| Model | Wet BTUh/TD | Frosted BTUh/TD | Fan hp | Rows | FPI | Face Area sq ft | Coil Volume cu ft | Surface sq ft | CFM | Face Velocity FPM | Stainless Weight lb |
|------------|----------------|--------------------|-----------|------|-----|--------------------|----------------------|------------------|-------|----------------------|------------------------|
| STC2-43-AA | 3841 | 3429 | 2 x 1/3 | 4 | 3 | 14.2 | 1.7 | 680 | 7800 | 551 | 1030 |
| STC2-63-AA | 5236 | 4676 | 2 x 1/3 | 6 | 3 | 14.2 | 2.2 | 1020 | 7400 | 522 | 1150 |
| STC2-83-AA | 6198 | 5634 | 2 x 1/3 | 8 | 3 | 14.2 | 2.6 | 1360 | 7100 | 501 | 1270 |
| STC2-44-AA | 4865 | 4342 | 2 x 1/3 | 4 | 4 | 14.2 | 1.7 | 840 | 7700 | 544 | 1060 |
| STC2-64-AA | 6192 | 5528 | 2 x 1/3 | 6 | 4 | 14.2 | 2.2 | 1262 | 7300 | 515 | 1190 |
| STC2-84-AA | 6787 | 6169 | 2 x 1/3 | 8 | 4 | 14.2 | 2.6 | 1682 | 6800 | 480 | 1320 |
| STC2-46-AA | 5594 | | 2 x 1/3 | 4 | 6 | 14.2 | 1.7 | 1174 | 7500 | 529 | 1110 |
| STC2-66-AA | 7121 | | 2 x 1/3 | 6 | 6 | 14.2 | 2.2 | 1762 | 7000 | 494 | 1260 |
| STC2-86-AA | 7805 | | 2 x 1/3 | 8 | 6 | 14.2 | 2.6 | 2348 | 6500 | 459 | 1420 |
| STC2-43-AB | | 4181 | 2 x 1/2 | 4 | 3 | 14.2 | 1.7 | 680 | 9680 | 683 | 1030 |
| STC2-63-AB | | 5368 | 2 x 1/2 | 6 | 3 | 14.2 | 2.2 | 1020 | 9100 | 642 | 1150 |
| STC2-83-AB | 6824 | 6203 | 2 x 1/2 | 8 | 3 | 14.2 | 2.6 | 1360 | 8200 | 579 | 1270 |
| STC2-44-AB | | 4876 | 2 x 1/2 | 4 | 4 | 14.2 | 1.7 | 840 | 9200 | 649 | 1060 |
| STC2-64-AB | 6638 | 5928 | 2 x 1/2 | 6 | 4 | 14.2 | 2.2 | 1262 | 8500 | 600 | 1190 |
| STC2-84-AB | 7568 | 6880 | 2 x 1/2 | 8 | 4 | 14.2 | 2.6 | 1682 | 8000 | 565 | 1320 |
| STC2-66-AB | 7633 | | 2 x 1/2 | 6 | 6 | 14.2 | 2.2 | 1762 | 8300 | 586 | 1260 |
| STC2-86-AB | 8703 | | 2 x 1/2 | 8 | 6 | 14.2 | 2.6 | 2348 | 7500 | 529 | 1420 |
| STC2-43-AC | | 4260 | 2 x 3/4 | 4 | 3 | 14.2 | 1.7 | 680 | 10600 | 748 | 1030 |
| STC2-63-AC | | 5476 | 2 x 3/4 | 6 | 3 | 14.2 | 2.2 | 1020 | 9800 | 692 | 1150 |
| STC2-83-AC | | 6602 | 2 x 3/4 | 8 | 3 | 14.2 | 2.6 | 1360 | 9200 | 649 | 1270 |
| STC2-44-AC | | 5189 | 2 x 3/4 | 4 | 4 | 14.2 | 1.7 | 840 | 10400 | 734 | 1060 |
| STC2-64-AC | | 6265 | 2 x 3/4 | 6 | 4 | 14.2 | 2.2 | 1262 | 9600 | 678 | 1190 |
| STC2-84-AC | | 7317 | 2 x 3/4 | 8 | 4 | 14.2 | 2.6 | 1682 | 8900 | 628 | 1320 |
| STC2-43-AD | | 4568 | 2 x 1 | 4 | 3 | 14.2 | 1.7 | 680 | 11700 | 826 | 1030 |
| STC2-63-AD | | 5729 | 2 x 1 | 6 | 3 | 14.2 | 2.2 | 1020 | 10700 | 755 | 1150 |
| STC2-83-AD | | 6864 | 2 x 1 | 8 | 3 | 14.2 | 2.6 | 1360 | 9900 | 699 | 1270 |
| STC2-44-AD | | 5527 | 2 x 1 | 4 | 4 | 14.2 | 1.7 | 840 | 11400 | 805 | 1060 |
| STC2-64-AD | | 6534 | 2 x 1 | 6 | 4 | 14.2 | 2.2 | 1262 | 10400 | 734 | 1190 |
| STC2-84-AD | | 7632 | 2 x 1 | 8 | 4 | 14.2 | 2.6 | 1682 | 9600 | 678 | 1320 |
| STC2-63-AE | | 6086 | 2 x 1 1/2 | 6 | 3 | 14.2 | 2.2 | 1020 | 12000 | 847 | 1150 |
| STC2-83-AE | | 7277 | 2 x 1 1/2 | 8 | 3 | 14.2 | 2.6 | 1360 | 11000 | 777 | 1270 |
| STC2-44-AE | | 5964 | 2 x 1 1/2 | 4 | 4 | 14.2 | 1.7 | 840 | 12800 | 904 | 1060 |
| STC2-64-AE | | 6952 | 2 x 1 1/2 | 6 | 4 | 14.2 | 2.2 | 1262 | 11600 | 819 | 1190 |
| STC2-84-AE | | 7988 | 2 x 1 1/2 | 8 | 4 | 14.2 | 2.6 | 1682 | 10400 | 734 | 1320 |

24" Diameter 1140 RPM – Three Fan Unit

| Model | Wet BTUh/TD | Frosted BTUh/TD | Fan hp | Rows | FPI | Face Area sq ft | Coil Volume cu ft | Surface sq ft | CFM | Face Velocity FPM | Stainless Weight lb |
|------------|----------------|--------------------|-----------|------|-----|--------------------|----------------------|------------------|--------|----------------------|------------------------|
| STC3-43-AA | 5762 | 5144 | 3 x 1/3 | 4 | 3 | 21.2 | 2.1 | 1020 | 11700 | 551 | 1480 |
| STC3-63-AA | 7855 | 7074 | 3 x 1/3 | 6 | 3 | 21.2 | 2.8 | 1530 | 11100 | 522 | 1660 |
| STC3-83-AA | 9297 | 8452 | 3 x 1/3 | 8 | 3 | 21.2 | 3.5 | 2040 | 10650 | 507 | 1830 |
| STC3-44-AA | 7297 | 6514 | 3 x 1/3 | 4 | 4 | 21.2 | 2.1 | 1260 | 11550 | 544 | 1520 |
| STC3-64-AA | 9289 | 8292 | 3 x 1/3 | 6 | 4 | 21.2 | 2.8 | 1893 | 10950 | 515 | 1710 |
| STC3-84-AA | 10180 | 9254 | 3 x 1/3 | 8 | 4 | 21.2 | 3.5 | 2523 | 10200 | 480 | 1910 |
| STC3-46-AA | 8391 | | 3 x 1/3 | 4 | 6 | 21.2 | 2.1 | 1761 | 11250 | 529 | 1600 |
| STC3-66-AA | 10682 | | 3 x 1/3 | 6 | 6 | 21.2 | 2.8 | 2643 | 10500 | 494 | 1820 |
| STC3-86-AA | 11707 | | 3 x 1/3 | 8 | 6 | 21.2 | 3.5 | 3522 | 9750 | 459 | 2050 |
| STC3-43-AB | | 6272 | 3 x 1/2 | 4 | 3 | 21.2 | 2.1 | 1020 | 14520 | 683 | 1480 |
| STC3-63-AB | | 8051 | 3 x 1/2 | 6 | 3 | 21.2 | 2.8 | 1530 | 13650 | 642 | 1660 |
| STC3-83-AB | 10236 | 9304 | 3 x 1/2 | 8 | 3 | 21.2 | 3.5 | 2040 | 12300 | 579 | 1830 |
| STC3-44-AB | | 7314 | 3 x 1/2 | 4 | 4 | 21.2 | 2.1 | 1260 | 13800 | 649 | 1520 |
| STC3-64-AB | 9956 | 8892 | 3 x 1/2 | 6 | 4 | 21.2 | 2.8 | 1893 | 12750 | 600 | 1710 |
| STC3-84-AB | 11352 | 10320 | 3 x 1/2 | 8 | 4 | 21.2 | 3.5 | 2523 | 12000 | 565 | 1910 |
| STC3-66-AB | 11450 | | 3 x 1/2 | 6 | 6 | 21.2 | 2.8 | 2643 | 12450 | 586 | 1820 |
| STC3-86-AB | 13055 | | 3 x 1/2 | 8 | 6 | 21.2 | 3.5 | 3522 | 11250 | 529 | 2050 |
| STC3-43-AC | | 6389 | 3 x 3/4 | 4 | 3 | 21.2 | 2.1 | 1020 | 15900 | 748 | 1480 |
| STC3-63-AC | | 8214 | 3 x 3/4 | 6 | 3 | 21.2 | 2.8 | 1530 | 14700 | 692 | 1660 |
| STC3-83-AC | | 9903 | 3 x 3/4 | 8 | 3 | 21.2 | 3.5 | 2040 | 103800 | 649 | 1830 |
| STC3-44-AC | | 7783 | 3 x 3/4 | 4 | 4 | 21.2 | 2.1 | 1260 | 15600 | 734 | 1520 |
| STC3-64-AC | | 9397 | 3 x 3/4 | 6 | 4 | 21.2 | 2.8 | 1893 | 14400 | 678 | 1710 |
| STC3-84-AC | | 10976 | 3 x 3/4 | 8 | 4 | 21.2 | 3.5 | 2523 | 13350 | 628 | 1910 |
| STC3-43-AD | | 6852 | 3 x 1 | 4 | 3 | 21.2 | 2.1 | 1020 | 17550 | 826 | 1480 |
| STC3-63-AD | | 8594 | 3 x 1 | 6 | 3 | 21.2 | 2.8 | 1530 | 16050 | 755 | 1660 |
| STC3-83-AD | | 10296 | 3 x 1 | 8 | 3 | 21.2 | 3.5 | 2040 | 14850 | 699 | 1830 |
| STC3-44-AD | | 8290 | 3 x 1 | 4 | 4 | 21.2 | 2.1 | 1260 | 17100 | 805 | 1520 |
| STC3-64-AD | | 9800 | 3 x 1 | 6 | 4 | 21.2 | 2.8 | 1893 | 15600 | 734 | 1710 |
| STC3-84-AD | | 11449 | 3 x 1 | 8 | 4 | 21.2 | 3.5 | 2523 | 14400 | 678 | 1910 |
| STC3-63-AE | | 9129 | 3 x 1 1/2 | 6 | 3 | 21.2 | 2.8 | 1530 | 18000 | 847 | 1660 |
| STC3-83-AE | | 10916 | 3 x 1 1/2 | 8 | 3 | 21.2 | 3.5 | 2040 | 16500 | 777 | 1830 |
| STC3-44-AE | | 8946 | 3 x 1 1/2 | 4 | 4 | 21.2 | 2.1 | 1260 | 19200 | 904 | 1520 |
| STC3-64-AE | | 10428 | 3 x 1 1/2 | 6 | 4 | 21.2 | 2.8 | 1893 | 17400 | 819 | 1710 |
| STC3-84-AE | | 11981 | 3 x 1 1/2 | 8 | 4 | 21.2 | 3.5 | 2523 | 15600 | 734 | 1910 |

24" Diameter 1140 RPM – Four Fan Unit

| Model | Wet BTUh/TD | Frosted BTUh/TD | Fan hp | Rows | FPI | Face Area sq ft | Coil Volume cu ft | Surface sq ft | CFM | Face Velocity FPM | Stainless Weight lb |
|------------|----------------|--------------------|-----------|------|-----|--------------------|----------------------|------------------|-------|----------------------|------------------------|
| STC4-43-AA | 7682 | 6859 | 4 x 1/3 | 4 | 3 | 28.3 | 2.6 | 1360 | 15600 | 551 | 1930 |
| STC4-63-AA | 10473 | 9352 | 4 x 1/3 | 6 | 3 | 28.3 | 3.4 | 2040 | 14800 | 522 | 2160 |
| STC4-83-AA | 12396 | 11269 | 4 x 1/3 | 8 | 3 | 28.3 | 4.3 | 2720 | 14200 | 501 | 2390 |
| STC4-44-AA | 9729 | 8685 | 4 x 1/3 | 4 | 4 | 28.3 | 2.6 | 1680 | 15400 | 544 | 1980 |
| STC4-64-AA | 12385 | 11056 | 4 x 1/3 | 6 | 4 | 28.3 | 3.4 | 2524 | 14600 | 515 | 2230 |
| STC4-84-AA | 13573 | 12339 | 4 x 1/3 | 8 | 4 | 28.3 | 4.3 | 3364 | 13600 | 480 | 2480 |
| STC4-46-AA | 11188 | | 4 x 1/3 | 4 | 6 | 28.3 | 2.6 | 2348 | 15000 | 529 | 2080 |
| STC4-66-AA | 14243 | | 4 x 1/3 | 6 | 6 | 28.3 | 3.4 | 3524 | 14000 | 494 | 2380 |
| STC4-86-AA | 15609 | | 4 x 1/3 | 8 | 6 | 28.3 | 4.3 | 4696 | 13000 | 459 | 2680 |
| STC4-43-AB | | 8363 | 4 x 1/2 | 4 | 3 | 28.3 | 2.6 | 1360 | 19360 | 683 | 1930 |
| STC4-63-AB | | 10735 | 4 x 1/2 | 6 | 3 | 28.3 | 3.4 | 2040 | 18200 | 642 | 2160 |
| STC4-83-AB | 13649 | 12405 | 4 x 1/2 | 8 | 3 | 28.3 | 4.3 | 2720 | 16400 | 579 | 2390 |
| STC4-44-AB | | 9752 | 4 x 1/2 | 4 | 4 | 28.3 | 2.6 | 1680 | 18400 | 649 | 1980 |
| STC4-64-AB | 13275 | 11856 | 4 x 1/2 | 6 | 4 | 28.3 | 3.4 | 2524 | 17000 | 600 | 2230 |
| STC4-84-AB | 15136 | 13760 | 4 x 1/2 | 8 | 4 | 28.3 | 4.3 | 3364 | 16000 | 565 | 2480 |
| STC4-66-AB | 15267 | | 4 x 1/2 | 6 | 6 | 28.3 | 3.4 | 3524 | 16600 | 586 | 2380 |
| STC4-86-AB | 17406 | | 4 x 1/2 | 8 | 6 | 28.3 | 4.3 | 4696 | 15000 | 529 | 2680 |
| STC4-43-AC | | 8519 | 4 x 3/4 | 4 | 3 | 28.3 | 2.6 | 1360 | 21200 | 748 | 1930 |
| STC4-63-AC | | 10952 | 4 x 3/4 | 6 | 3 | 28.3 | 3.4 | 2040 | 19600 | 692 | 2160 |
| STC4-83-AC | | 13205 | 4 x 3/4 | 8 | 3 | 28.3 | 4.3 | 2720 | 18400 | 649 | 2390 |
| STC4-44-AC | | 10378 | 4 x 3/4 | 4 | 4 | 28.3 | 2.6 | 1680 | 20800 | 734 | 1980 |
| STC4-64-AC | | 12529 | 4 x 3/4 | 6 | 4 | 28.3 | 3.4 | 2524 | 19200 | 678 | 2230 |
| STC4-84-AC | | 14634 | 4 x 3/4 | 8 | 4 | 28.3 | 4.3 | 3364 | 17800 | 628 | 2480 |
| STC4-43-AD | | 9136 | 4 x 1 | 4 | 3 | 28.3 | 2.6 | 1360 | 23400 | 826 | 1930 |
| STC4-63-AD | | 11458 | 4 x 1 | 6 | 3 | 28.3 | 3.4 | 2040 | 21400 | 755 | 2160 |
| STC4-83-AD | | 13728 | 4 x 1 | 8 | 3 | 28.3 | 4.3 | 2720 | 19800 | 699 | 2390 |
| STC4-44-AD | | 11054 | 4 x 1 | 4 | 4 | 28.3 | 2.6 | 1680 | 22800 | 805 | 1980 |
| STC4-64-AD | | 13067 | 4 x 1 | 6 | 4 | 28.3 | 3.4 | 2524 | 20800 | 734 | 2230 |
| STC4-84-AD | | 15265 | 4 x 1 | 8 | 4 | 28.3 | 4.3 | 3364 | 19200 | 678 | 2480 |
| STC4-63-AE | | 12172 | 4 x 1 1/2 | 6 | 3 | 28.3 | 3.4 | 2040 | 24000 | 847 | 2160 |
| STC4-83-AE | | 14554 | 4 x 1 1/2 | 8 | 3 | 28.3 | 4.3 | 2720 | 22000 | 777 | 2390 |
| STC4-44-AE | | 11928 | 4 x 1 1/2 | 4 | 4 | 28.3 | 2.6 | 1680 | 25600 | 904 | 1980 |
| STC4-64-AE | | 13904 | 4 x 1 1/2 | 6 | 4 | 28.3 | 3.4 | 2524 | 23200 | 819 | 2230 |
| STC4-84-AE | | 15975 | 4 x 1 1/2 | 8 | 4 | 28.3 | 4.3 | 3364 | 20800 | 734 | 2480 |

24" Diameter 1140 RPM – Five Fan Unit

| Model | Wet BTUh/TD | Frosted BTUh/TD | Fan hp | Rows | FPI | Face Area sq ft | Coil Volume cu ft | Surface sq ft | CFM | Face Velocity FPM | Stainless Weight lb |
|------------|----------------|--------------------|-----------|------|-----|--------------------|----------------------|------------------|-------|----------------------|------------------------|
| STC5-43-AA | 9603 | 8573 | 5 x 1/3 | 4 | 3 | 35.4 | 3.0 | 1700 | 19500 | 551 | 2370 |
| STC5-63-AA | 13091 | 11690 | 5 x 1/3 | 6 | 3 | 35.4 | 4.1 | 2550 | 18500 | 522 | 2670 |
| STC5-83-AA | 15496 | 14086 | 5 x 1/3 | 8 | 3 | 35.4 | 5.1 | 3400 | 17750 | 501 | 2950 |
| STC5-44-AA | 12161 | 10856 | 5 x 1/3 | 4 | 4 | 35.4 | 3.0 | 2100 | 19250 | 544 | 2440 |
| STC5-64-AA | 15481 | 13820 | 5 x 1/3 | 6 | 4 | 35.4 | 4.1 | 3155 | 18250 | 515 | 2750 |
| STC5-84-AA | 16966 | 15423 | 5 x 1/3 | 8 | 4 | 35.4 | 5.1 | 4205 | 17000 | 480 | 3070 |
| STC5-46-AA | 13985 | | 5 x 1/3 | 4 | 6 | 35.4 | 3.0 | 2935 | 18750 | 529 | 2570 |
| STC5-66-AA | 17803 | | 5 x 1/3 | 6 | 6 | 35.4 | 4.1 | 4405 | 17500 | 494 | 2940 |
| STC5-86-AA | 19511 | | 5 x 1/3 | 8 | 6 | 35.4 | 5.1 | 5870 | 16250 | 459 | 3310 |
| STC5-43-AB | | 10454 | 5 x 1/2 | 4 | 3 | 35.4 | 3.0 | 1700 | 24200 | 683 | 2370 |
| STC5-63-AB | | 13419 | 5 x 1/2 | 6 | 3 | 35.4 | 4.1 | 2550 | 22750 | 642 | 2670 |
| STC5-83-AB | 17061 | 15507 | 5 x 1/2 | 8 | 3 | 35.4 | 5.1 | 3400 | 20500 | 579 | 2950 |
| STC5-44-AB | | 12190 | 5 x 1/2 | 4 | 4 | 35.4 | 3.0 | 2100 | 23000 | 649 | 2440 |
| STC5-64-AB | 16594 | 14820 | 5 x 1/2 | 6 | 4 | 35.4 | 4.1 | 3155 | 21250 | 600 | 2750 |
| STC5-84-AB | 18920 | 17199 | 5 x 1/2 | 8 | 4 | 35.4 | 5.1 | 4205 | 20000 | 565 | 3070 |
| STC5-66-AB | 19083 | | 5 x 1/2 | 6 | 6 | 35.4 | 4.1 | 4405 | 20750 | 586 | 2940 |
| STC5-86-AB | 21758 | | 5 x 1/2 | 8 | 6 | 35.4 | 5.1 | 5870 | 18750 | 529 | 3310 |
| STC5-43-AC | | 10649 | 5 x 3/4 | 4 | 3 | 35.4 | 3.0 | 1700 | 26500 | 748 | 2370 |
| STC5-63-AC | | 13690 | 5 x 3/4 | 6 | 3 | 35.4 | 4.1 | 2550 | 24500 | 692 | 2670 |
| STC5-83-AC | | 16506 | 5 x 3/4 | 8 | 3 | 35.4 | 5.1 | 3400 | 23000 | 649 | 2950 |
| STC5-44-AC | | 12972 | 5 x 3/4 | 4 | 4 | 35.4 | 3.0 | 2100 | 26000 | 734 | 2440 |
| STC5-64-AC | | 15662 | 5 x 3/4 | 6 | 4 | 35.4 | 4.1 | 3155 | 24000 | 678 | 2750 |
| STC5-84-AC | | 18293 | 5 x 3/4 | 8 | 4 | 35.4 | 5.1 | 4205 | 22250 | 628 | 3070 |
| STC5-43-AD | | 11420 | 5 x 1 | 4 | 3 | 35.4 | 3.0 | 1700 | 29250 | 826 | 2370 |
| STC5-63-AD | | 14323 | 5 x 1 | 6 | 3 | 35.4 | 4.1 | 2550 | 26750 | 755 | 2670 |
| STC5-83-AD | | 17161 | 5 x 1 | 8 | 3 | 35.4 | 5.1 | 3400 | 24750 | 699 | 2950 |
| STC5-44-AD | | 13817 | 5 x 1 | 4 | 4 | 35.4 | 3.0 | 2100 | 28500 | 805 | 2440 |
| STC5-64-AD | | 16334 | 5 x 1 | 6 | 4 | 35.4 | 4.1 | 3155 | 26000 | 734 | 2750 |
| STC5-84-AD | | 19081 | 5 x 1 | 8 | 4 | 35.4 | 5.1 | 4205 | 24000 | 678 | 3070 |
| STC5-63-AE | | 15215 | 5 x 1 1/2 | 6 | 3 | 35.4 | 4.1 | 2550 | 30000 | 847 | 2670 |
| STC5-83-AE | | 18193 | 5 x 1 1/2 | 8 | 3 | 35.4 | 5.1 | 3400 | 27500 | 777 | 2950 |
| STC5-44-AE | | 14910 | 5 x 1 1/2 | 4 | 4 | 35.4 | 3.0 | 2100 | 32000 | 904 | 2440 |
| STC5-64-AE | | 17379 | 5 x 1 1/2 | 6 | 4 | 35.4 | 4.1 | 3155 | 29000 | 819 | 2750 |
| STC5-84-AE | | 19969 | 5 x 1 1/2 | 8 | 4 | 35.4 | 5.1 | 4205 | 26000 | 734 | 3070 |

24" Diameter 1140 RPM – Six Fan Unit

| Model | Wet BTUh/TD | Frosted BTUh/TD | Fan hp | Rows | FPI | Face Area sq ft | Coil Volume cu ft | Surface sq ft | CFM | Face Velocity FPM | Stainless Weight lb |
|------------|----------------|--------------------|-----------|------|-----|--------------------|----------------------|------------------|-------|----------------------|------------------------|
| STC6-43-AA | 11523 | 10288 | 6 x 1/3 | 4 | 3 | 42.5 | 3.4 | 2040 | 23400 | 551 | 2820 |
| STC6-63-AA | 15709 | 14028 | 6 x 1/3 | 6 | 3 | 42.5 | 4.7 | 3060 | 22200 | 522 | 3170 |
| STC6-83-AA | 78595 | 16903 | 6 x 1/3 | 8 | 3 | 42.5 | 6.0 | 4080 | 27300 | 501 | 3570 |
| STC6-44-AA | 14594 | 13027 | 6 x 1/3 | 4 | 4 | 42.5 | 3.4 | 2520 | 23100 | 544 | 2900 |
| STC6-64-AA | 18577 | 16584 | 6 x 1/3 | 6 | 4 | 42.5 | 4.7 | 3786 | 21900 | 575 | 3270 |
| STC6-84-AA | 20360 | 18508 | 6 x 1/3 | 8 | 4 | 42.5 | 6.0 | 5046 | 20400 | 480 | 3660 |
| STC6-46-AA | 16783 | | 6 x 1/3 | 4 | 6 | 42.5 | 3.4 | 3522 | 22500 | 529 | 3060 |
| STC6-66-AA | 27364 | | 6 x 1/3 | 6 | 6 | 42.5 | 4.7 | 5286 | 21000 | 494 | 3500 |
| STC6-86-AA | 23414 | | 6 x 1/3 | 8 | 6 | 42.5 | 6.0 | 7044 | 19500 | 459 | 3970 |
| STC6-43-AB | | 12544 | 6 x 1/2 | 4 | 3 | 42.5 | 3.4 | 2040 | 29040 | 683 | 2820 |
| STC6-63-AB | | 16103 | 6 x 1/2 | 6 | 3 | 42.5 | 4.7 | 3060 | 27300 | 642 | 3170 |
| STC6-83-AB | 20473 | 18608 | 6 x 1/2 | 8 | 3 | 42.5 | 6.0 | 4080 | 24600 | 579 | 3570 |
| STC6-44-AB | | 14628 | 6 x 1/2 | 4 | 4 | 42.5 | 3.4 | 2520 | 27600 | 649 | 2900 |
| STC6-64-AB | 19973 | 17784 | 6 x 1/2 | 6 | 4 | 42.5 | 4.7 | 3786 | 25500 | 600 | 3270 |
| STC6-84-AB | 22704 | 20639 | 6 x 1/2 | 8 | 4 | 42.5 | 6.0 | 5046 | 24000 | 565 | 3660 |
| STC6-66-AB | 22900 | | 6 x 1/2 | 6 | 6 | 42.5 | 4.7 | 5286 | 24900 | 586 | 3500 |
| STC6-86-AB | 26110 | | 6 x 1/2 | 8 | 6 | 42.5 | 6.0 | 7044 | 22500 | 529 | 3970 |
| STC6-43-AC | | 12779 | 6 x 3/4 | 4 | 3 | 42.5 | 3.4 | 2040 | 31800 | 748 | 2820 |
| STC6-63-AC | | 16428 | 6 x 3/4 | 6 | 3 | 42.5 | 4.7 | 3060 | 29400 | 692 | 3170 |
| STC6-83-AC | | 19807 | 6 x 3/4 | 8 | 3 | 42.5 | 6.0 | 4080 | 27600 | 649 | 3570 |
| STC6-44-AC | | 15566 | 6 x 3/4 | 4 | 4 | 42.5 | 3.4 | 2520 | 31200 | 734 | 2900 |
| STC6-64-AC | | 18794 | 5 x 3/4 | 6 | 4 | 42.5 | 4.7 | 3786 | 28800 | 678 | 3270 |
| STC6-84-AC | | 21951 | 6 x 3/4 | 8 | 4 | 42.5 | 6.0 | 5046 | 26700 | 628 | 3660 |
| STC6-43-AD | | 13703 | 6 x 1 | 4 | 3 | 42.5 | 3.4 | 2040 | 35100 | 826 | 2820 |
| STC6-63-AD | | 17187 | 6 x 1 | -6 | 3 | 42.5 | 4.7 | 3060 | 32100 | 755 | 3170 |
| STC6-83-AD | | 20593 | 6 x 1 | 8 | 3 | 42.5 | 6.0 | 4080 | 29700 | 699 | 3570 |
| STC6-44-AD | | 16581 | 6 x 1 | 4 | 4 | 42.5 | 3.4 | 2520 | 34200 | 805 | 2900 |
| STC6-64-AD | | 19601 | 6 x 1 | 6 | 4 | 42.5 | 4.7 | 3786 | 31200 | 734 | 3270 |
| STC6-84-AD | | 22897 | 6 x 1 | 8 | 4 | 42.5 | 6.0 | 5046 | 28800 | 678 | 3660 |
| STC6-63-AE | | 18259 | 6 x 1 1/2 | 6 | 3 | 42.5 | 4.7 | 3060 | 36000 | 847 | 3170 |
| STC6-83-AE | | 21831 | 6 x 1 1/2 | 8 | 3 | 42.5 | 6.0 | 4080 | 33000 | 777 | 3570 |
| STC6-44-AE | | 17892 | 6 x 1 1/2 | 4 | 4 | 42.5 | 3.4 | 2520 | 38400 | 904 | 2900 |
| STC6-64-AE | | 20855 | 6 x 1 1/2 | 6 | 4 | 42.5 | 4.7 | 3786 | 34800 | 819 | 3270 |
| STC6-84-AE | | 23963 | 6 x 1 1/2 | 8 | 4 | 42.5 | 6.0 | 5046 | 31200 | 734 | 3660 |

30" Diameter 850 RPM – One Fan Unit

| Model | Wet BTUh/TD | Frosted BTUh/TD | Fan hp | Rows | FPI | Face Area sq ft | Coil Volume cu ft | Surface sq ft | CFM | Face Velocity FPM | Stainless Weight lb |
|------------|----------------|--------------------|--------|------|-----|--------------------|----------------------|------------------|------|----------------------|------------------------|
| STC1-43-BB | 2935 | 2622 | 1/2 | 4 | 3 | 10.6 | 1.7 | 510 | 6050 | 569 | 710 |
| STC1-63-BB | 3952 | 3526 | 1/2 | 6 | 3 | 10.6 | 2.1 | 764 | 5600 | 527 | 780 |
| STC1-83-BB | 4480 | 4074 | 1/2 | 8 | 3 | 10.6 | 2.4 | 1019 | 5100 | 480 | 870 |
| STC1-44-BB | 3685 | 3289 | 1/2 | 4 | 4 | 10.6 | 1.7 | 631 | 5900 | 555 | 730 |
| STC1-64-BB | 4632 | 4136 | 1/2 | 6 | 4 | 10.6 | 2.1 | 946 | 5450 | 513 | 810 |
| STC1-84-BB | 4975 | 4484 | 1/2 | 8 | 4 | 10.6 | 2.4 | 1261 | 4950 | 466 | 890 |
| STC1-43-BC | 3765 | 2812 | 3/4 | 4 | 3 | 10.6 | 1.7 | 510 | 6800 | 640 | 710 |
| STC1-63-BC | 4204 | 3752 | 3/4 | 6 | 3 | 10.6 | 2.1 | 764 | 6200 | 584 | 780 |
| STC1-83-BC | 4884 | 4440 | 3/4 | 8 | 3 | 10.6 | 2.4 | 1019 | 5700 | 536 | 870 |
| STC1-44-BC | 3976 | 3496 | 3/4 | 4 | 4 | 10.6 | 1.7 | 631 | 6600 | 621 | 730 |
| STC1-64-BC | 4853 | 4334 | 3/4 | 6 | 4 | 10.6 | 2.1 | 946 | 6000 | 565 | 810 |
| STC1-84-BC | 5433 | 4940 | 3/4 | 8 | 4 | 10.6 | 2.4 | 1261 | 5600 | 527 | 890 |
| STC1-43-BD | | 3341 | 1 | 4 | 3 | 10.6 | 1.7 | 510 | 8450 | 795 | 710 |
| STC1-63-BD | | 4136 | 1 | 6 | 3 | 10.6 | 2.1 | 764 | 7450 | 701 | 780 |
| STC1-83-BD | 5278 | 4873 | 1 | 8 | 3 | 10.6 | 2.4 | 1019 | 6500 | 612 | 870 |
| STC1-44-BD | | 4008 | 1 | 4 | 4 | 10.6 | 1.7 | 631 | 8150 | 767 | 730 |
| STC1-64-BD | | 4667 | 1 | 6 | 4 | 10.6 | 2.1 | 946 | 7100 | 668 | 810 |
| STC1-84-BD | 5844 | 5311 | 1 | 8 | 4 | 10.6 | 2.4 | 1261 | 6300 | 593 | 890 |
| STC1-43-BE | | 3508 | 1 1/2 | 4 | 3 | 10.6 | 1.7 | 510 | 9100 | 856 | 710 |
| STC1-63-BE | | 4249 | 1 1/2 | 6 | 3 | 10.6 | 2.1 | 764 | 7850 | 739 | 780 |
| STC1-83-BE | | 4989 | 1 1/2 | 8 | 3 | 10.6 | 2.4 | 1019 | 7000 | 659 | 870 |
| STC1-44-BE | | 4192 | 1 1/2 | 4 | 4 | 10.6 | 1.7 | 631 | 8700 | 819 | 730 |
| STC1-64-BE | | 4814 | 1 1/2 | 6 | 4 | 10.6 | 2.1 | 946 | 7550 | 711 | 810 |
| STC1-84-BE | | 5522 | 1 1/2 | 8 | 4 | 10.6 | 2.4 | 1261 | 6750 | 635 | 890 |

30" Diameter 850 RPM – Two Fan Unit

| Model | Wet BTUh/TD | Frosted BTUh/TD | Fan hp | Rows | FPI | Face Area sq ft | Coil Volume cu ft | Surface sq ft | CFM | Face Velocity FPM | Stainless Weight lb |
|------------|----------------|--------------------|-----------|------|-----|--------------------|----------------------|------------------|-------|----------------------|------------------------|
| STC2-43-BB | 5870 | 5244 | 2 x 1/2 | 4 | 3 | 273 | 2.4 | 1020 | 12100 | 569 | 1260 |
| STC2-63-BB | 7903 | 7051 | 2 x 1/2 | 6 | 3 | 21.3 | 3.0 | 1528 | 11200 | 527 | 1390 |
| STC2-83-BB | 8960 | 8147 | 2 x 1/2 | 8 | 3 | 21.3 | 3.7 | 2038 | 10200 | 480 | 1570 |
| STC2-44-BB | 7369 | 6578 | 2 x 1/2 | 4 | 4 | 21.3 | 2.4 | 1262 | 11800 | 555 | 1280 |
| STC2-64-BB | 9264 | 8272 | 2 x 1/2 | 6 | 4 | 21.3 | 3.0 | 1892 | 10900 | 513 | 1450 |
| STC2-84-BB | 9950 | 8969 | 2 x 1/2 | 8 | 4 | 21.3 | 3.7 | 2522 | 9900 | 466 | 1630 |
| STC2-43-BC | 6330 | 5624 | 2 x 3/4 | 4 | 3 | 21.3 | 2.4 | 1020 | 13600 | 640 | 1260 |
| STC2-63-BC | 8407 | 7503 | 2 x 3/4 | 6 | 3 | 21.3 | 3.0 | 1528 | 12400 | 584 | 1390 |
| STC2-83-BC | 9768 | 8880 | 2 x 3/4 | 8 | 3 | 21.3 | 3.7 | 2038 | 11400 | 536 | 1570 |
| STC2-44-BC | 7832 | 6992 | 2 x 3/4 | 4 | 4 | 21.3 | 2.4 | 1262 | 13200 | 621 | 1280 |
| STC2-64-BC | 9707 | 8667 | 2 x 3/4 | 6 | 4 | 21.3 | 3.0 | 1892 | 12000 | 565 | 1450 |
| STC2-84-BC | 10867 | 9879 | 2 x 3/4 | 8 | 4 | 21.3 | 3.7 | 2522 | 11200 | 527 | 1630 |
| STC2-43-BD | | 6682 | 2 x 1 | 4 | 3 | 21.3 | 2.4 | 1020 | 16900 | 795 | 1260 |
| STC2-63-BD | | 8272 | 2 x 1 | 6 | 3 | 21.3 | 3.0 | 1528 | 14900 | 707 | 1390 |
| STC2-83-BD | 10556 | 9746 | 2 x 1 | 8 | 3 | 21.3 | 3.7 | 2038 | 13000 | 612 | 1570 |
| STC2-44-BD | | 8016 | 2 x 1 | 4 | 4 | 21.3 | 2.4 | 1262 | 16300 | 767 | 1280 |
| STC2-64-BD | | 9334 | 2 x 1 | 6 | 4 | 21.3 | 3.0 | 1892 | 14200 | 668 | 1450 |
| STC2-84-BD | 11688 | 10623 | 2 x 1 | 8 | 4 | 21.3 | 3.7 | 2522 | 12600 | 593 | 1630 |
| STC2-43-BE | | 7015 | 2 x 1 1/2 | 4 | 3 | 21.3 | 2.4 | 1020 | 18200 | 856 | 1260 |
| STC2-63-BE | | 8498 | 2 x 1 1/2 | 6 | 3 | 21.3 | 3.0 | 1528 | 15700 | 739 | 1390 |
| STC2-83-BE | | 9979 | 2 x 1 1/2 | 8 | 3 | 21.3 | 3.7 | 2038 | 14000 | 659 | 1570 |
| STC2-44-BE | | 8384 | 2 x 1 1/2 | 4 | 4 | 21.3 | 2.4 | 1262 | 17400 | 819 | 1280 |
| STC2-64-BE | | 9628 | 2 x 1 1/2 | 6 | 4 | 21.3 | 3.0 | 1892 | 15100 | 711 | 1450 |
| STC2-84-BE | | 11045 | 2 x 1 1/2 | 8 | 4 | 21.3 | 3.7 | 2522 | 13500 | 635 | 1630 |

30" Diameter 850 RPM – Three Fan Unit

| Model | Wet BTUh/TD | Frosted BTUh/TD | Fan hp | Rows | FPI | Face Area sq ft | Coil Volume cu ft | Surface sq ft | CFM | Face Velocity FPM | Stainless Weight lb |
|------------|----------------|--------------------|-----------|------|-----|--------------------|----------------------|------------------|-------|----------------------|------------------------|
| STC3-43-BB | 8804 | 7866 | 3 x 1/2 | 4 | 3 | 31.9 | 3.0 | 1530 | 18150 | 569 | 1820 |
| STC3-63-BB | 11855 | 10577 | 3 x 1/2 | 6 | 3 | 31.9 | 4.0 | 2292 | 16800 | 527 | 2020 |
| STC3-83-BB | 13440 | 12221 | 3 x 1/2 | 8 | 3 | 31.9 | 4.9 | 3057 | 15300 | 480 | 2280 |
| STC3-44-BB | 11054 | 9867 | 3 x 1/2 | 4 | 4 | 31.9 | 3.0 | 1893 | 17700 | 555 | 1830 |
| STC3-64-BB | 13896 | 12407 | 3 x 1/2 | 6 | 4 | 31.9 | 4.0 | 2838 | 16350 | 573 | 2100 |
| STC3-84-BB | 14925 | 13453 | 3 x 1/2 | 8 | 4 | 31.9 | 4.9 | 3783 | 14850 | 466 | 2380 |
| STC3-43-BC | 9494 | 8435 | 3 x 3/4 | 4 | 3 | 31.9 | 3.0 | 1530 | 20400 | 640 | 1820 |
| STC3-63-BC | 12611 | 11255 | 3 x 3/4 | 6 | 3 | 31.9 | 4.0 | 2292 | 18600 | 584 | 2020 |
| STC3-83-BC | 14652 | 13320 | 3 x 3/4 | 8 | 3 | 31.9 | 4.9 | 3057 | 17100 | 536 | 2280 |
| STC3-44-BC | 11747 | 10488 | 3 x 3/4 | 4 | 4 | 31.9 | 3.0 | 1893 | 19800 | 621 | 1830 |
| STC3-64-BC | 14560 | 13007 | 3 x 3/4 | 6 | 4 | 31.9 | 4.0 | 2838 | 18000 | 565 | 2100 |
| STC3-84-BC | 16300 | 14819 | 3 x 3/4 | 8 | 4 | 31.9 | 4.9 | 3783 | 16800 | 527 | 2380 |
| STC3-43-BD | | 10022 | 3 x 1 | 4 | 3 | 31.9 | 3.0 | 1530 | 25350 | 795 | 1820 |
| STC3-63-BD | | 12407 | 3 x 1 | 6 | 3 | 31.9 | 4.0 | 2292 | 22350 | 707 | 2020 |
| STC3-83-BD | 15834 | 14619 | 3 x 1 | 8 | 3 | 31.9 | 4.9 | 3057 | 19500 | 612 | 2280 |
| STC3-44-BD | | 12023 | 3 x 1 | 4 | 4 | 31.9 | 3.0 | 1893 | 24450 | 767 | 1830 |
| STC3-64-BD | | 14007 | 3 x 1 | 6 | 4 | 31.9 | 4.0 | 2838 | 21300 | 668 | 2100 |
| STC3-84-BD | 17532 | 15934 | 3 x 1 | 8 | 4 | 31.9 | 4.9 | 3783 | 18900 | 593 | 2380 |
| STC3-43-BE | | 10523 | 3 x 1 1/2 | 4 | 3 | 31.9 | 3.0 | 1530 | 27300 | 856 | 1820 |
| STC3-63-BE | | 12746 | 3 x 1 1/2 | 6 | 3 | 31.9 | 4.0 | 2292 | 23550 | 739 | 2020 |
| STC3-83-BE | | 14968 | 3 x 1 1/2 | 8 | 3 | 31.9 | 4.9 | 3057 | 21000 | 659 | 2280 |
| STC3-44-BE | | 12575 | 3 x 1 1/2 | 4 | 4 | 31.9 | 3.0 | 1893 | 26100 | 819 | 1830 |
| STC3-64-BE | | 14441 | 3 x 1 1/2 | 6 | 4 | 31.9 | 4.0 | 2838 | 22650 | 711 | 2100 |
| STC3-84-BE | | 16567 | 3 x 1 1/2 | 8 | 4 | 31.9 | 4.9 | 3783 | 20250 | 635 | 2380 |

30" Diameter 850 RPM – Four Fan Unit

| Model | Wet BTUh/TD | Frosted BTUh/TD | Fan hp | Rows | FPI | Face Area sq ft | Coil Volume cu ft | Surface sq ft | CFM | Face Velocity FPM | Stainless Weight lb |
|------------|----------------|--------------------|-----------|------|-----|--------------------|----------------------|------------------|-------|----------------------|------------------------|
| STC4-43-BB | 11739 | 10488 | 4 x 1/2 | 4 | 3 | 42.5 | 3.6 | 2040 | 24200 | 569 | 2370 |
| STC4-63-BB | 15806 | 14102 | 4 x 1/2 | 6 | 3 | 42.5 | 4.9 | 3056 | 22400 | 527 | 2640 |
| STC4-83-BB | 17920 | 16295 | 4 x 1/2 | 8 | 3 | 42.5 | 6.2 | 4076 | 20400 | 480 | 2990 |
| STC4-44-BB | 14738 | 13156 | 4 x 1/2 | 4 | 4 | 42.5 | 3.6 | 2524 | 23600 | 555 | 2370 |
| STC4-64-BB | 18527 | 16543 | 4 x 1/2 | 6 | 4 | 42.5 | 4.9 | 3784 | 21800 | 513 | 2750 |
| STC4-84-BB | 19900 | 17938 | 4 x 1/2 | 8 | 4 | 42.5 | 6.2 | 5044 | 19800 | 466 | 3130 |
| STC4-43-BC | 12659 | 11247 | 4 x 3/4 | 4 | 3 | 42.5 | 3.6 | 2040 | 27200 | 640 | 2370 |
| STC4-63-BC | 16814 | 15006 | 4 x 3/4 | 6 | 3 | 42.5 | 4.9 | 3056 | 24800 | 584 | 2640 |
| STC4-83-BC | 19536 | 17760 | 4 x 3/4 | 8 | 3 | 42.5 | 6.2 | 4076 | 22800 | 536 | 2990 |
| STC4-44-BC | 15663 | 13984 | 4 x 3/4 | 4 | 4 | 42.5 | 3.6 | 2524 | 26400 | 621 | 2370 |
| STC4-64-BC | 19413 | 17334 | 4 x 3/4 | 6 | 4 | 42.5 | 4.9 | 3784 | 24000 | 565 | 2750 |
| STC4-84-BC | 21734 | 19758 | 4 x 3/4 | 8 | 4 | 42.5 | 6.2 | 5044 | 22400 | 527 | 3130 |
| STC4-43-BD | | 13363 | 4 x 1 | 4 | 3 | 42.5 | 3.6 | 2040 | 33800 | 795 | 2370 |
| STC4-63-BD | | 16543 | 4 x 1 | 6 | 3 | 42.5 | 4.9 | 3056 | 29800 | 701 | 2640 |
| STC4-83-BD | 21112 | 19492 | 4 x 1 | 8 | 3 | 42.5 | 6.2 | 4076 | 26000 | 612 | 2990 |
| STC4-44-BD | | 16031 | 4 x 1 | 4 | 4 | 42.5 | 3.6 | 2524 | 32600 | 767 | 2370 |
| STC4-64-BD | | 18668 | 4 x 1 | 6 | 4 | 42.5 | 4.9 | 3784 | 28400 | 668 | 2750 |
| STC4-84-BD | 23377 | 21245 | 4 x 1 | 8 | 4 | 42.5 | 6.2 | 5044 | 25200 | 593 | 3130 |
| STC4-43-BE | | 14030 | 4 x 1 1/2 | 4 | 3 | 42.5 | 3.6 | 2040 | 36400 | 856 | 2370 |
| STC4-63-BE | | 16995 | 4 x 1 1/2 | 6 | 3 | 42.5 | 4.9 | 3056 | 31400 | 739 | 2640 |
| STC4-83-BE | | 19958 | 4 x 1 1/2 | 8 | 3 | 42.5 | 6.2 | 4076 | 28000 | 659 | 2990 |
| STC4-44-BE | | 16767 | 4 x 1 1/2 | 4 | 4 | 42.5 | 3.6 | 2524 | 34800 | 819 | 2370 |
| STC4-64-BE | | 19255 | 4 x 1 1/2 | 6 | 4 | 42.5 | 4.9 | 3784 | 30200 | 711 | 2750 |
| STC4-84-BE | | 22089 | 4 x 1 1/2 | 8 | 4 | 42.5 | 6.2 | 5044 | 27000 | 635 | 3130 |

30" Diameter 850 RPM – Five Fan Unit

| Model | Wet BTUh/TD | Frosted BTUh/TD | Fan hp | Rows | FPI | Face Area sq ft | Coil Volume cu ft | Surface sq ft | CFM | Face Velocity FPM | Stainless Weight lb |
|------------|----------------|--------------------|-----------|------|-----|--------------------|----------------------|------------------|-------|----------------------|------------------------|
| STC5-43-BB | 14674 | 13170 | 5 x 1/2 | 4 | 3 | 53.1 | 4.2 | 2550 | 30250 | 569 | 2920 |
| STC5-63-BB | 19758 | 17628 | 5 x 1/2 | 6 | 3 | 53.1 | 5.9 | 3820 | 28000 | 527 | 3260 |
| STC5-83-BB | 22400 | 20369 | 5 x 1/2 | 8 | 3 | 53.1 | 7.5 | 5095 | 25500 | 480 | 3690 |
| STC5-44-BB | 18423 | 16445 | 5 x 1/2 | 4 | 4 | 53.1 | 4.2 | 3155 | 29500 | 555 | 2920 |
| STC5-64-BB | 23159 | 20679 | 5 x 1/2 | 6 | 4 | 53.1 | 5.9 | 4730 | 27250 | 513 | 3390 |
| STC5-84-BB | 24875 | 22422 | 5 x 1/2 | 8 | 4 | 53.1 | 7.5 | 6305 | 24750 | 466 | 3870 |
| STC5-43-BC | 15824 | 14059 | 5 x 3/4 | 4 | 3 | 53.1 | 4.2 | 2550 | 34000 | 640 | 2920 |
| STC5-63-BC | 21078 | 18758 | 5 x 3/4 | 6 | 3 | 53.1 | 5.9 | 3820 | 31000 | 584 | 3260 |
| STC5-83-BC | 24420 | 22200 | 5 x 3/4 | 8 | 3 | 53.1 | 7.5 | 5095 | 28500 | 536 | 3690 |
| STC5-44-BC | 19579 | 17480 | 5 x 3/4 | 4 | 4 | 53.1 | 4.2 | 3155 | 33000 | 621 | 2920 |
| STC5-64-BC | 24267 | 21668 | 5 x 3/4 | 6 | 4 | 53.1 | 5.9 | 4730 | 30000 | 565 | 3390 |
| STC5-84-BC | 27167 | 24698 | 5 x 3/4 | 8 | 4 | 53.1 | 7.5 | 6305 | 28000 | 527 | 3870 |
| STC5-43-BD | | 16704 | 5 x 1 | 4 | 3 | 53.1 | 4.2 | 2550 | 42250 | 795 | 2920 |
| STC5-63-BD | | 20679 | 5 x 1 | 6 | 3 | 53.1 | 5.9 | 3820 | 37250 | 701 | 3260 |
| STC5-83-BD | 26390 | 24365 | 5 x 1 | 8 | 3 | 53.1 | 7.5 | 5095 | 32500 | 612 | 3690 |
| STC5-44-BD | | 20039 | 5 x 1 | 4 | 4 | 53.1 | 4.2 | 3155 | 40750 | 767 | 2920 |
| STC5-64-BD | | 23335 | 5 x 1 | 6 | 4 | 53.1 | 5.9 | 4730 | 35500 | 668 | 3390 |
| STC5-84-BD | 29221 | 26557 | 5 x 1 | 8 | 4 | 53.1 | 7.5 | 6305 | 31500 | 593 | 3870 |
| STC5-43-BE | | 17538 | 5 x 1 1/2 | 4 | 3 | 53.1 | 4.2 | 2550 | 45500 | 856 | 2920 |
| STC5-63-BE | | 21244 | 5 x 1 1/2 | 6 | 3 | 53.1 | 5.9 | 3820 | 39250 | 739 | 3260 |
| STC5-83-BE | | 24947 | 5 x 1 1/2 | 8 | 3 | 53.1 | 7.5 | 5095 | 35000 | 659 | 3690 |
| STC5-44-BE | | 20959 | 5 x 1 1/2 | 4 | 4 | 53.1 | 4.2 | 3155 | 43500 | 819 | 2920 |
| STC5-64-BE | | 24069 | 5 x 1 1/2 | 6 | 4 | 53.1 | 5.9 | 4730 | 37750 | 711 | 3390 |
| STC5-84-BE | | 27611 | 5 x 1 1/2 | 8 | 4 | 53.1 | 7.5 | 6305 | 33750 | 635 | 3870 |

30" Diameter 850 RPM – Six Fan Unit

| Model | Wet BTUh/TD | Frosted BTUh/TD | Fan hp | Rows | FPI | Face Area sq ft | Coil Volume cu ft | Surface sq ft | CFM | Face Velocity FPM | Stainless Weight lb |
|------------|----------------|--------------------|-----------|------|-----|--------------------|----------------------|------------------|-------|----------------------|------------------------|
| STC6-43-BB | 17609 | 15732 | 6 x 1/2 | 4 | 3 | 63.8 | 4.9 | 3060 | 36300 | 569 | 3470 |
| STC6-63-BB | 23710 | 21154 | 6 x 1/2 | 6 | 3 | 63.8 | 6.8 | 4584 | 33600 | 527 | 3880 |
| STC6-83-BB | 26880 | 24442 | 6 x 1/2 | 8 | 3 | 63.8 | 8.7 | 6114 | 30600 | 480 | 4400 |
| STC6-44-BB | 22108 | 19734 | 6 x 1/2 | 4 | 4 | 63.8 | 4.9 | 3786 | 35400 | 555 | 3480 |
| STC6-64-BB | 27791 | 24815 | 6 x 1/2 | 6 | 4 | 63.8 | 6.8 | 5676 | 32700 | 513 | 4040 |
| STC6-84-BB | 29850 | 26906 | 6 x 1/2 | 8 | 4 | 63.8 | 8.7 | 7566 | 29700 | 466 | 4620 |
| STC6-43-BC | 18989 | 16871 | 6 x 3/4 | 4 | 3 | 63.8 | 4.9 | 3060 | 40800 | 640 | 3470 |
| STC6-63-BC | 25222 | 22510 | 6 x 3/4 | 6 | 3 | 63.8 | 6.8 | 4584 | 37200 | 584 | 3880 |
| STC6-83-BC | 29304 | 26640 | 6 x 3/4 | 8 | 3 | 63.8 | 8.7 | 6114 | 34200 | 536 | 4400 |
| STC6-44-BC | 23495 | 20976 | 6 x 3/4 | 4 | 4 | 63.8 | 4.9 | 3786 | 39600 | 621 | 3480 |
| STC6-64-BC | 29120 | 26001 | 6 x 3/4 | 6 | 4 | 63.8 | 6.8 | 5676 | 36000 | 565 | 4040 |
| STC6-84-BC | 32601 | 29637 | 6 x 3/4 | 8 | 4 | 63.8 | 8.7 | 7566 | 33600 | 527 | 4620 |
| STC6-43-BD | | 20045 | 6 x 1 | 4 | 3 | 63.8 | 4.9 | 3060 | 50700 | 795 | 3470 |
| STC6-63-BD | | 24815 | 6 x 1 | 6 | 3 | 63.8 | 6.8 | 4584 | 44700 | 701 | 3880 |
| STC6-83-BD | 31668 | 29237 | 6 x 1 | 8 | 3 | 63.8 | 8.7 | 6114 | 39000 | 612 | 4400 |
| STC6-44-BD | | 24047 | 6 x 1 | 4 | 4 | 63.8 | 4.9 | 3786 | 48900 | 767 | 3480 |
| STC6-64-BD | | 28001 | 6 x 1 | 6 | 4 | 63.8 | 6.8 | 5676 | 42600 | 668 | 4040 |
| STC6-84-BD | 35065 | 31868 | 6 x 1 | 8 | 4 | 63.8 | 8.7 | 7566 | 37800 | 593 | 4620 |
| STC6-43-BE | | 21045 | 6 x 1 1/2 | 4 | 3 | 63.8 | 4.9 | 3060 | 54600 | 856 | 3470 |
| STC6-63-BE | | 25493 | 6 x 1 1/2 | 6 | 3 | 63.8 | 6.8 | 4584 | 47100 | 739 | 3880 |
| STC6-83-BE | | 29937 | 6 x 1 1/2 | 8 | 3 | 63.8 | 8.7 | 6114 | 42000 | 659 | 4400 |
| STC6-44-BE | | 25151 | 6 x 1 1/2 | 4 | 4 | 63.8 | 4.9 | 3786 | 52200 | 819 | 3480 |
| STC6-64-BE | | 28883 | 6 x 1 1/2 | 6 | 4 | 63.8 | 6.8 | 5676 | 45300 | 711 | 4040 |
| STC6-84-BE | | 33134 | 6 x 1 1/2 | 8 | 4 | 63.8 | 8.7 | 7566 | 40500 | 635 | 4620 |

30" Diameter 1140 RPM – One Fan Unit

| Model | Frosted BTU/h/TD | Fan hp | Rows | FPI | Face Area sq ft | Coil Volume cu ft | Surface sq ft | CFM | Face Velocity FPM | Stainless Weight lb |
|------------|---------------------|--------|------|-----|--------------------|----------------------|------------------|------|----------------------|------------------------|
| STC1-43-CD | 2985 | 1 | 4 | 3 | 10.6 | 1.7 | 510 | 7400 | 696 | 710 |
| STC1-63-CD | 3990 | 1 | 6 | 3 | 10.6 | 2.1 | 764 | 6950 | 654 | 780 |
| STC1-83-CD | 4817 | 1 | 8 | 3 | 10.6 | 2.4 | 1019 | 6550 | 616 | 870 |
| STC1-44-CD | 3706 | 1 | 4 | 4 | 10.6 | 1.7 | 631 | 7250 | 682 | 730 |
| STC1-64-CD | 4572 | 1 | 6 | 4 | 10.6 | 2.1 | 946 | 6800 | 640 | 810 |
| STC1-84-CD | 5370 | 1 | 8 | 4 | 10.6 | 2.4 | 1261 | 6300 | 593 | 890 |
| STC1-43-CE | 3457 | 1 1/2 | 4 | 3 | 10.6 | 1.7 | 510 | 8900 | 838 | 710 |
| STC1-63-CE | 4360 | 1 1/2 | 6 | 3 | 10.6 | 2.1 | 764 | 8250 | 776 | 780 |
| STC1-83-CE | 5214 | 1 1/2 | 8 | 3 | 10.6 | 2.4 | 1019 | 7600 | 715 | 870 |
| STC1-44-CE | 4794 | 1 1/2 | 4 | 4 | 10.6 | 1.7 | 631 | 8700 | 819 | 730 |
| STC1-64-CE | 4971 | 1 1/2 | 6 | 4 | 10.6 | 2.1 | 946 | 8000 | 753 | 810 |
| STC1-84-CE | 5873 | 1 1/2 | 8 | 4 | 10.6 | 2.4 | 1261 | 7400 | 696 | 890 |
| STC1-63-CF | 4661 | 2 | 6 | 3 | 10.6 | 2.1 | 764 | 9350 | 880 | 780 |
| STC1-83-CF | 5553 | 2 | 8 | 3 | 10.6 | 2.4 | 1019 | 8500 | 800 | 870 |
| STC1-64-CF | 5299 | 2 | 6 | 4 | 10.6 | 2.1 | 946 | 8950 | 842 | 810 |
| STC1-84-CF | 6126 | 2 | 8 | 4 | 10.6 | 2.4 | 1261 | 8100 | 762 | 890 |

30" Diameter 1140 RPM – Two Fan Unit

| Model | Frosted BTU/h/TD | Fan hp | Rows | FPI | Face Area sq ft | Coil Volume cu ft | Surface sq ft | CFM | Face Velocity FPM | Stainless Weight lb |
|------------|---------------------|-----------|------|-----|--------------------|----------------------|------------------|-------|----------------------|------------------------|
| STC2-43-CD | 5971 | 2 x 1 | 4 | 3 | 21.3 | 2.4 | 1020 | 14800 | 696 | 1260 |
| STC2-63-CD | 7980 | 2 x 1 | 6 | 3 | 21.3 | 3.0 | 1528 | 13900 | 654 | 1390 |
| STC2-83-CD | 9635 | 2 x 1 | 8 | 3 | 21.3 | 3.7 | 2038 | 13100 | 616 | 1570 |
| STC2-44-CD | 7413 | 2 x 1 | 4 | 4 | 21.3 | 2.4 | 1262 | 14500 | 682 | 1280 |
| STC2-64-CD | 9144 | 2 x 1 | 6 | 4 | 21.3 | 3.0 | 1892 | 13600 | 640 | 1450 |
| STC2-84-CD | 10620 | 2 x 1 | 8 | 4 | 21.3 | 3.7 | 2522 | 12600 | 593 | 1630 |
| STC2-43-CE | 6914 | 2 x 1 1/2 | 4 | 3 | 21.3 | 2.4 | 1020 | 17800 | 838 | 1260 |
| STC2-63-CE | 8719 | 2 x 1 1/2 | 6 | 3 | 21.3 | 3.0 | 1528 | 16500 | 776 | 1390 |
| STC2-83-CE | 10427 | 2 x 1 1/2 | 8 | 3 | 21.3 | 3.7 | 2038 | 15200 | 715 | 1570 |
| STC2-44-CE | 8388 | 2 x 1 1/2 | 4 | 4 | 21.3 | 2.4 | 1262 | 17400 | 819 | 1280 |
| STC2-64-CE | 9942 | 2 x 1 1/2 | 6 | 4 | 21.3 | 3.0 | 1892 | 16000 | 753 | 1450 |
| STC2-84-CE | 11626 | 2 x 1 1/2 | 8 | 4 | 21.3 | 3.7 | 2522 | 14800 | 696 | 1630 |
| STC2-63-CF | 9323 | 2 x 2 | 6 | 3 | 21.3 | 3.0 | 1528 | 18700 | 880 | 1390 |
| STC2-83-CF | 11107 | 2 x 2 | 8 | 3 | 21.3 | 3.7 | 2038 | 17000 | 800 | 1570 |
| STC2-64-CF | 10597 | 2 x 2 | 6 | 4 | 21.3 | 3.0 | 1892 | 17900 | 842 | 1450 |
| STC2-84-CF | 12252 | 2 x 2 | 8 | 4 | 21.3 | 3.7 | 2522 | 16200 | 762 | 1630 |

30" Diameter 1140 RPM – Three Fan Unit

| Model | Frosted BTU/h/TD | Fan hp | Rows | FPI | Face Area sq ft | Coil Volume cu ft | Surface sq ft | CFM | Face Velocity FPM | Stainless Weight lb |
|------------|---------------------|-----------|------|-----|--------------------|----------------------|------------------|-------|----------------------|------------------------|
| STC3-43-CD | 8956 | 3 x 1 | 4 | 3 | 31.9 | 3.0 | 1530 | 22200 | 696 | 1820 |
| STC3-63-CD | 11970 | 3 x 1 | 6 | 3 | 31.9 | 4.0 | 2292 | 20850 | 654 | 2020 |
| STC3-83-CD | 14452 | 2 x 1 | 8 | 3 | 31.9 | 4.9 | 3057 | 79650 | 676 | 2280 |
| STC3-44-CD | 11119 | 3 x 1 | 4 | 4 | 31.9 | 3.0 | 1893 | 27750 | 682 | 1830 |
| STC3-64-CD | 13716 | 3 x 1 | 6 | 4 | 31.9 | 4.0 | 2838 | 20400 | 640 | 2100 |
| STC3-84-CD | 15931 | 3 x 1 | 8 | 4 | 31.9 | 4.9 | 3783 | 78900 | 593 | 2380 |
| STC3-43-CE | 10371 | 3 x 1 1/2 | 4 | 3 | 31.9 | 3.0 | 1530 | 26700 | 838 | 1820 |
| STC3-63-CE | 13079 | 3 x 1 1/2 | 6 | 3 | 31.9 | 4.0 | 2292 | 24750 | 776 | 2020 |
| STC3-83-CE | 156417 | 3 x 1 1/2 | 8 | 3 | 31.9 | 4.9 | 3057 | 22800 | 715 | 2280 |
| STC3-44-CE | 12582 | 3 x 1 1/2 | 4 | 4 | 31.9 | 3.0 | 1893 | 26700 | 879 | 1830 |
| STC3-64-CE | 14913 | 3 x 1 1/2 | 6 | 4 | 31.9 | 4.0 | 2838 | 24000 | 753 | 2100 |
| STC3-84-CE | 17439 | 3 x 1 1/2 | 8 | 4 | 31.9 | 4.9 | 3783 | 22200 | 696 | 2380 |
| STC3-63-CF | 13984 | 3 x 2 | 6 | 3 | 31.9 | 4.0 | 2292 | 28050 | 880 | 2020 |
| STC3-83-CF | 16660 | 3 x 2 | 8 | 3 | 31.9 | 4.9 | 3057 | 25500 | 800 | 2280 |
| STC3-64-CF | 15896 | 3 x 2 | 6 | 4 | 31.9 | 4.0 | 2838 | 26850 | 842 | 2100 |
| STC3-84-CF | 18378 | 3 x 2 | 8 | 4 | 31.9 | 4.9 | 3783 | 24300 | 762 | 2380 |

30" Diameter 1140 RPM – Four Fan Unit

| Model | Frosted BTU/h/TD | Fan hp | Rows | FPI | Face Area sq ft | Coil Volume cu ft | Surface sq ft | CFM | Face Velocity FPM | Stainless Weight lb |
|------------|---------------------|-----------|------|-----|--------------------|----------------------|------------------|-------|----------------------|------------------------|
| STC4-43-CD | 11942 | 4 x 1 | 4 | 3 | 42.5 | 3.6 | 2040 | 29600 | 696 | 2370 |
| STC4-63-CD | 15960 | 4 x 1 | 6 | 3 | 42.5 | 4.9 | 3056 | 27800 | 654 | 2640 |
| STC4-83-CD | 19270 | 4 x 1 | 8 | 3 | 42.5 | 6.2 | 4076 | 26200 | 676 | 2990 |
| STC4-44-CD | 14826 | 4 x 1 | 4 | 4 | 42.5 | 3.6 | 2524 | 29000 | 682 | 2370 |
| STC4-64-CD | 18288 | 4 x 1 | 6 | 4 | 42.5 | 4.9 | 3784 | 27200 | 640 | 2750 |
| STC4-84-CD | 21241 | 4 x 1 | 8 | 4 | 42.5 | 6.2 | 5044 | 25200 | 593 | 3130 |
| STC4-43-CE | 13828 | 4 x 1 1/2 | 4 | 3 | 42.5 | 3.6 | 2040 | 35600 | 838 | 2370 |
| STC4-63-CE | 17438 | 4 x 1 1/2 | 6 | 3 | 42.5 | 4.9 | 3056 | 33000 | 776 | 2640 |
| STC4-83-CE | 20855 | 4 x 1 1/2 | 8 | 3 | 42.5 | 6.2 | 4076 | 30400 | 775 | 2990 |
| STC4-44-CE | 16776 | 4 x 1 1/2 | 4 | 4 | 42.5 | 3.6 | 2524 | 34800 | 879 | 2370 |
| STC4-64-CE | 19883 | 4 x 1 1/2 | 6 | 4 | 42.5 | 4.9 | 3784 | 32000 | 753 | 2750 |
| STC4-84-CE | 23252 | 4 x 1 1/2 | 8 | 4 | 42.5 | 6.2 | 5044 | 29600 | 696 | 3130 |
| STC4-63-CF | 18645 | 4 x 2 | 6 | 3 | 42.5 | 4.9 | 3056 | 37400 | 880 | 2640 |
| STC4-83-CF | 22213 | 4 x 2 | 8 | 3 | 42.5 | 6.2 | 4076 | 34000 | 800 | 2990 |
| STC4-64-CF | 21194 | 4 x 2 | 6 | 4 | 42.5 | 4.9 | 3784 | 35800 | 842 | 2750 |
| STC4-84-CF | 24504 | 4 x 2 | 8 | 4 | 42.5 | 6.2 | 5044 | 32400 | 762 | 3130 |

30" Diameter 1140 RPM – Five Fan Unit

| Model | Frosted BTU/h/TD | Fan hp | Rows | FPI | Face Area sq ft | Coil Volume cu ft | Surface sq ft | CFM | Face Velocity FPM | Stainless Weight lb |
|------------|---------------------|-----------|------|-----|--------------------|----------------------|------------------|-------|----------------------|------------------------|
| STC5-43-CD | 14927 | 5 x 1 | 4 | 3 | 53.1 | 4.2 | 2550 | 37000 | 696 | 2920 |
| STC5-63-CD | 19950 | 5 x 1 | 6 | 3 | 53.1 | 5.9 | 3820 | 34750 | 654 | 3260 |
| STC5-83-CD | 24087 | 5 x 1 | 8 | 3 | 53.1 | 7.5 | 5095 | 32750 | 676 | 3690 |
| STC5-44-CD | 18532 | 5 x 1 | 4 | 4 | 53.1 | 4.2 | 3755 | 36250 | 682 | 2920 |
| STC5-64-CD | 22860 | 5 x 1 | 6 | 4 | 53.1 | 5.9 | 4730 | 34000 | 640 | 3390 |
| STC5-84-CD | 26551 | 5 x 1 | 8 | 4 | 53.1 | 7.5 | 6305 | 37500 | 593 | 3870 |
| STC5-43-CE | 17285 | 5 x 1 1/2 | 4 | 3 | 53.1 | 4.2 | 2550 | 44500 | 838 | 2920 |
| STC5-63-CE | 21798 | 5 x 1 1/2 | 6 | 3 | 53.1 | 5.9 | 3820 | 47250 | 776 | 3260 |
| STC5-83-CE | 26068 | 5 x 1 1/2 | 8 | 3 | 53.1 | 7.5 | 5095 | 38000 | 715 | 3690 |
| STC5-44-CE | 20970 | 5 x 1 1/2 | 4 | 4 | 53.1 | 4.2 | 3755 | 43500 | 879 | 2920 |
| STC5-64-CE | 24854 | 5 x 1 1/2 | 6 | 4 | 53.1 | 5.9 | 4730 | 40000 | 753 | 3390 |
| STC5-84-CE | 29065 | 5 x 1 1/2 | 8 | 4 | 53.1 | 7.5 | 6305 | 37000 | 696 | 3870 |
| STC5-63-CF | 23306 | 5 x 2 | 6 | 3 | 53.1 | 5.9 | 3820 | 46750 | 880 | 3260 |
| STC5-83-CF | 27767 | 5 x 2 | 8 | 3 | 53.1 | 7.5 | 5095 | 42500 | 800 | 3690 |
| STC5-64-CF | 26493 | 5 x 2 | 6 | 4 | 53.1 | 5.9 | 4730 | 44750 | 842 | 3390 |
| STC5-84-CF | 30630 | 5 x 2 | 8 | 4 | 53.1 | 7.5 | 6305 | 40500 | 762 | 3870 |

30" Diameter 1140 RPM – Six Fan Unit

| Model | Frosted BTU/h/TD | Fan hp | Rows | FPI | Face Area sq ft | Coil Volume cu ft | Surface sq ft | CFM | Face Velocity FPM | Stainless Weight lb |
|------------|---------------------|-----------|------|-----|--------------------|----------------------|------------------|-------|----------------------|------------------------|
| STC6-43-CD | 17912 | 6 x 1 | 4 | 3 | 63.8 | 4.9 | 3060 | 44400 | 696 | 3470 |
| STC6-63-CD | 23940 | 6 x 1 | 6 | 3 | 63.8 | 6.8 | 4584 | 41700 | 654 | 3880 |
| STC6-83-CD | 28904 | 6 x 1 | 8 | 3 | 63.8 | 8.7 | 6114 | 39300 | 616 | 4400 |
| STC6-44-CD | 22239 | 6 x 1 | 4 | 4 | 63.8 | 4.9 | 3786 | 43500 | 682 | 3480 |
| STC6-64-CD | 27432 | 6 x 1 | 6 | 4 | 63.8 | 6.8 | 5676 | 40800 | 640 | 4040 |
| STC6-84-CD | 31861 | 6 x 1 | 8 | 4 | 63.8 | 8.7 | 7566 | 37800 | 593 | 4620 |
| STC6-43-CE | 20741 | 6 x 1 1/2 | 4 | 3 | 63.8 | 4.9 | 3060 | 53400 | 838 | 3470 |
| STC6-63-CE | 26157 | 6 x 1 1/2 | 6 | 3 | 63.8 | 6.8 | 4584 | 49500 | 776 | 3880 |
| STC6-83-CE | 31282 | 6 x 1 1/2 | 8 | 3 | 63.8 | 8.7 | 6114 | 45600 | 715 | 4400 |
| STC6-44-CE | 25164 | 6 x 1 1/2 | 4 | 4 | 63.8 | 4.9 | 3786 | 52200 | 819 | 3480 |
| STC6-64-CE | 29825 | 6 x 1 1/2 | 6 | 4 | 63.8 | 6.8 | 5676 | 48000 | 753 | 4040 |
| STC6-84-CE | 34878 | 6 x 1 1/2 | 8 | 4 | 63.8 | 8.7 | 7566 | 44400 | 696 | 4620 |
| STC6-63-CF | 27968 | 6 x 2 | 6 | 3 | 63.8 | 6.8 | 4584 | 56100 | 880 | 3880 |
| STC6-83-CF | 33320 | 6 x 2 | 8 | 3 | 63.8 | 8.7 | 6114 | 51000 | 800 | 4400 |
| STC6-64-CF | 31791 | 6 x 2 | 6 | 4 | 63.8 | 6.8 | 5676 | 53700 | 842 | 4040 |
| STC6-84-CF | 36757 | 6 x 2 | 8 | 4 | 63.8 | 8.7 | 7566 | 48600 | 762 | 4620 |

Specifications

BASE: Furnish as shown on the drawings STC style evaporator with a capacity of ___ BTUH at ___ °F room temperature and ___ °F saturated suction temperature with ___ refrigerant.

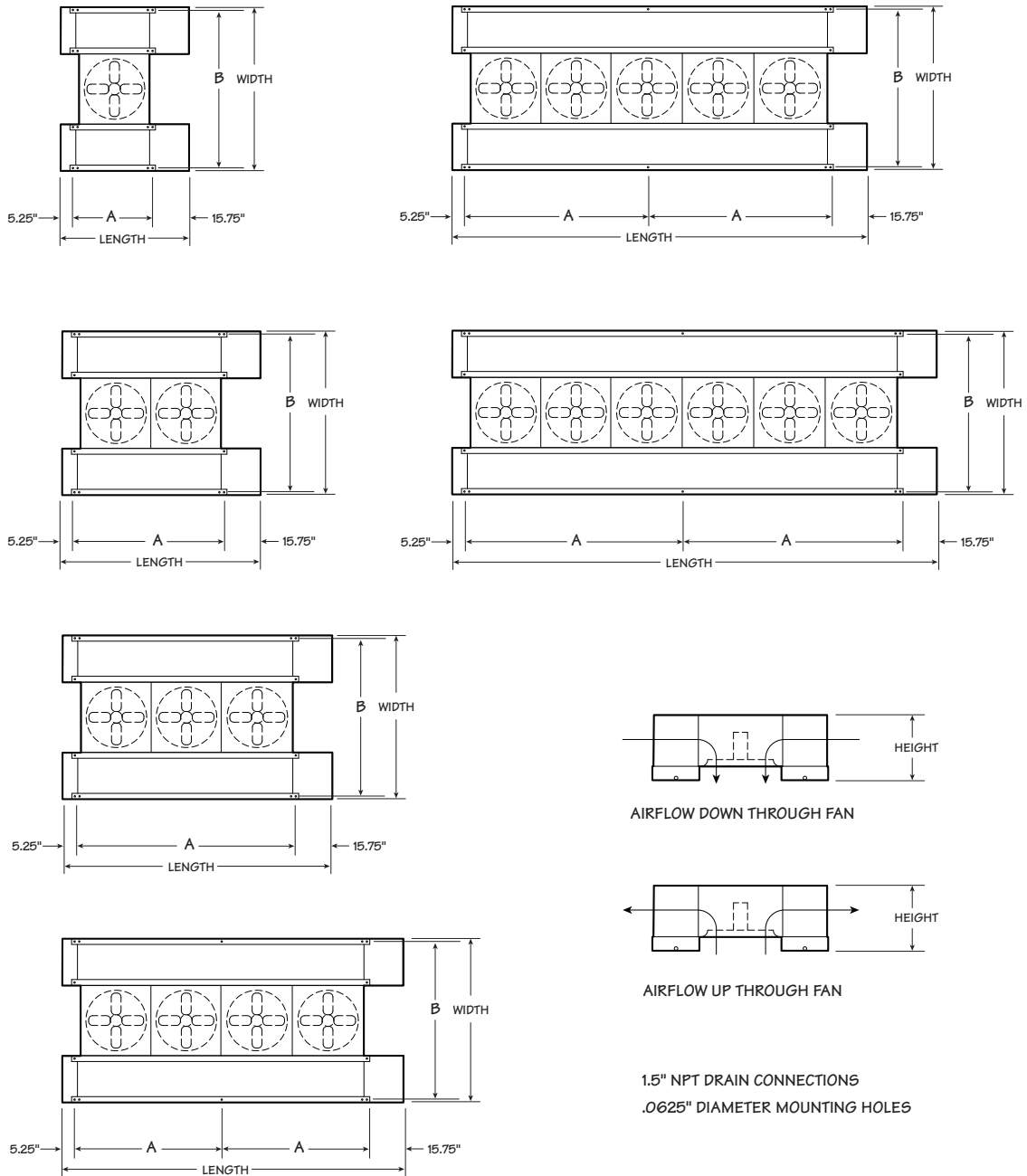
PERFORMANCE: The thermal capacity of the evaporator shall be based on the "TD Ratings Method" in accordance with AHRI-Standard 420. Where by the temperature difference (TD) shall be defined as the difference between the air temperature entering the evaporator and the saturated suction temperature of the coil.

CASING: STC model casing shall be heavy duty mill galvanized steel for long life and maximum strength.

MOTOR: Fan motors shall be Premium Efficiency Totally Enclosed Fan Cooled with 1.15 service factor. Fan motor shall be grease suitable for -40°F for low ambient conditions operating at 870 and 1160. Fan motors shall be foot mounted and prewired to NEMA 4 junction box located on the return bend end.

FAN AND FAN GUARD: Fan shall be constructed of aluminum material and selected for maximum efficiency with non-overloading performance. Fan guards shall be powder coated for long life.

HEAT TRANSFER COIL: Coils shall be constructed of 3/4" OD tubes staggered in the direction of air flow. Turbo-spacers located between tubes provide nominal 3, 4 or 6 FPI spacing and improved efficiency by turbulating airflow. Coil construction shall be available in hot dip galvanized steel tubes and fins, aluminum tube and fins, copper tubes and aluminum fins and stainless steel tube and aluminum fins. All tubing shall meet the requirements of ASME B31.5 Refrigerant Piping Code. The entire coil shall be pressure tested to 350 psig. The coil shall be evacuated and charged with low pressure nitrogen prior to shipment.



| Fan Quantity | Model | | Dimensions in | | | | | Heater Removal Clearance in | |
|--------------|--------------|------|---------------|-------|--------|--------|-------|-----------------------------|------------|
| | Fan Diameter | Rows | Length | Width | Height | A | B | Header End | Return End |
| One | 24" | 4 | 55.00 | 56.00 | 24.00 | 34.00 | 51.75 | 38 | |
| | | 6 | 55.00 | 64.00 | 24.00 | 34.00 | 59.75 | | |
| | | 8 | 55.00 | 70.00 | 24.00 | 34.00 | 65.75 | | |
| | 30" | 4 | 61.00 | 62.00 | 28.00 | 40.00 | 57.75 | 48 | |
| | | 6 | 61.00 | 70.00 | 28.00 | 40.00 | 65.75 | | |
| | | 8 | 61.00 | 76.00 | 28.00 | 40.00 | 71.75 | | |
| Two | 24" | 4 | 85.00 | 56.00 | 24.00 | 64.00 | 51.75 | 68 | |
| | | 6 | 85.00 | 64.00 | 24.00 | 64.00 | 59.75 | | |
| | | 8 | 85.00 | 70.00 | 24.00 | 64.00 | 65.75 | | |
| | 30" | 4 | 97.00 | 62.00 | 28.00 | 76.00 | 57.75 | 80 | |
| | | 6 | 97.00 | 70.00 | 28.00 | 76.00 | 65.75 | | |
| | | 8 | 97.00 | 76.00 | 28.00 | 76.00 | 71.75 | | |
| Three | 24" | 4 | 115.00 | 56.00 | 24.00 | 94.00 | 51.75 | 98 | |
| | | 6 | 115.00 | 64.00 | 24.00 | 94.00 | 59.75 | | |
| | | 8 | 115.00 | 70.00 | 24.00 | 94.00 | 65.75 | | |
| | 30" | 4 | 133.00 | 62.00 | 28.00 | 112.00 | 57.75 | 68 | |
| | | 6 | 133.00 | 70.00 | 28.00 | 112.00 | 65.75 | | |
| | | 8 | 133.00 | 76.00 | 28.00 | 112.00 | 71.75 | | |
| Four | 24" | 4 | 145.00 | 56.00 | 24.00 | 62.00 | 51.75 | 68 | 68 |
| | | 6 | 145.00 | 64.00 | 24.00 | 62.00 | 59.75 | | |
| | | 8 | 145.00 | 70.00 | 24.00 | 62.00 | 65.75 | | |
| | 30" | 4 | 169.00 | 62.00 | 28.00 | 74.00 | 57.75 | 80 | |
| | | 6 | 169.00 | 70.00 | 28.00 | 74.00 | 65.75 | | |
| | | 8 | 169.00 | 76.00 | 28.00 | 74.00 | 71.75 | | |
| Five | 24" | 4 | 175.00 | 56.00 | 24.00 | 77.00 | 51.75 | 80 | 80 |
| | | 6 | 175.00 | 64.00 | 24.00 | 77.00 | 59.75 | | |
| | | 8 | 175.00 | 70.00 | 24.00 | 77.00 | 65.75 | | |
| | 30" | 4 | 205.00 | 62.00 | 28.00 | 92.00 | 57.75 | 98 | |
| | | 6 | 205.00 | 70.00 | 28.00 | 92.00 | 65.75 | | |
| | | 8 | 205.00 | 76.00 | 28.00 | 92.00 | 71.75 | | |
| Six | 24" | 4 | 205.00 | 56.00 | 24.00 | 92.00 | 51.75 | 98 | 98 |
| | | 6 | 205.00 | 64.00 | 24.00 | 92.00 | 59.75 | | |
| | | 8 | 205.00 | 70.00 | 24.00 | 92.00 | 65.75 | | |
| | 30" | 4 | 241.00 | 62.00 | 28.00 | 110.00 | 57.75 | | |
| | | 6 | 241.00 | 70.00 | 28.00 | 110.00 | 65.75 | | |
| | | 8 | 241.00 | 76.00 | 28.00 | 110.00 | 71.75 | | |

STC industrial evaporator

ENGINEERING DATA

SPX COOLING TECHNOLOGIES, INC.

827 WEST PROGRESS DRIVE
DIXON, IL 61021 USA
815 284 2700 | spxcooling@spx.com
spxcooling.com

SGS-STC-TECH-20A | ISSUED 6/2020

© 2020 SPX COOLING TECHNOLOGIES, INC | ALL RIGHTS RESERVED

In the interest of technological progress, all products are subject to design
and/or material change without notice.

