

Shopper-friendly Trouble-free Performance



Heavy Duty Entrance doors are engineered for high volume use, durability and peace of mind. The STYLELINE® Heavy-Duty Plus Entrance Door stands up to the highest traffic areas and provides shopper-friendly, trouble-free performance.

- Stainless steel trim.
- Heavy-duty hydraulic closer.
- Condensation protection up to 75% RH.*
- NSF-certified.



*Ideal ambient temperatures of 75° F and cooler temperature of 38° F.

Application:

- Cooler.

Features:

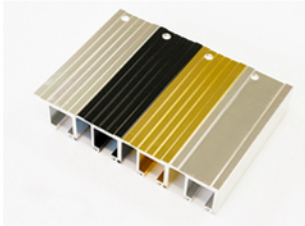
- Top-mounted heavy-duty hydraulic closer.
- Three heavy-duty hinges per door.
- Condensation protection up to 75% relative humidity.
- Energy Controller pre-wired.
- NSF-certified door and frame.
- UL-certified door and frame.
- Removable threshold.
- Internal push bar.
- Stainless steel trim.
- Easy-clean covered frames.
- Internal stainless bottom kick plate.
- Lifetime finish in satin black, anodized bright silver, satin silver or bright gold.
- 36"W x 80"H, 36"W x 84"H, single & double and custom sizes.*

** ADA compliant

Options Available:

- External kick plate.
- STYLELINE LED Plus lighting system.
- Available in Classic® Plus and 20//20 Plus®.
- High output T-8 lighting with energy-efficient ballast.
- Full-length handle.
- Door locks and heavy duty bumper guards.
- Finish upgrade in anodized bright black.

Features & Options:



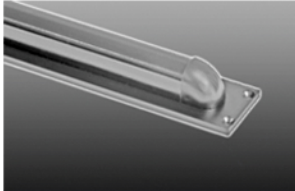
Finishes available



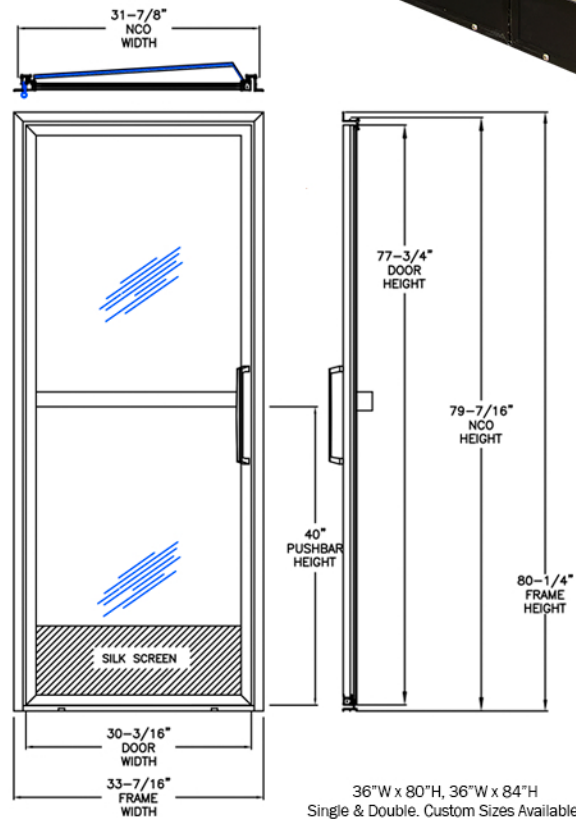
Hydraulic Closer



Full length Handle



Bumper Guard



Shown with Roll-mart Cart.

Double Heavy-duty Entrance Doors with STYLELINE Fixed Window Shown.

