



## ***Beer Cave Fact:***

***"In short, caves are a perfect store addition if you wish to boost traffic and profit for your store."***

***- Miller***

Double Door Slider Shown



Single Door Slider Shown

STYLELINE® patented Automatic Beer Cave Doors are completely automated offering hands-free convenience and outstanding ways to invite customers in!

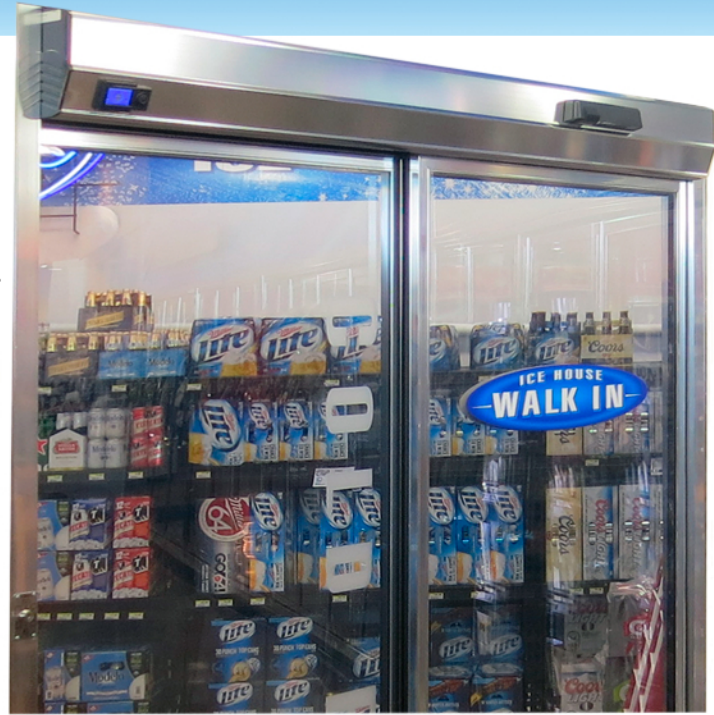
- Largest glass viewing area for maximum product visibility and easy access.
- Lifetime anodized finish in satin silver or satin black.
- ADA compliant.

## Application:

- Cooler, High Humidity.

## Features:

- Patented automated glass entrance door assembly for walk-in coolers.
- Lifetime anodized finish in satin silver or satin black.
- Tempered two-pane heated insulating safety glass on sliding doors and fixed windows.
- Available in double-slide or single-slide with one or two Fixed Windows.
- UL-certified door & frame.
- ADA compliant.
- Automatic "fly-open" battery backup system allows for safe and quick exit in case of power loss.
- Professional installation.
- Power Requirements: 120V, 20A, 60HZ Single Phase. Two dedicated circuits required.
- Electronic components are coated with water resistant material.
- No threshold.
- Large dedicated service organization offers quick response.
- Standard STYLELINE Warranty.



Single Door Slider Shown

## Systems Available:

- Classic Plus system provides condensation protection with anti-condensate heaters on frame and header.
- 20//20 Plus system provides guaranteed condensation protection with anti-condensate heaters on frame, header & glass.

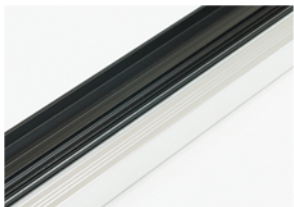
## Sizes Available:

- 78 inch - Single Door Slider.
- 108 inch - Double Door Slider.
- 120 inch - Double Door Slider.
- 140 inch - Double Door Slider.

## Options Available:

- Finish upgrade in bright black.
- Auto Lock feature with key switch.

## Features & Options:



Finishes available



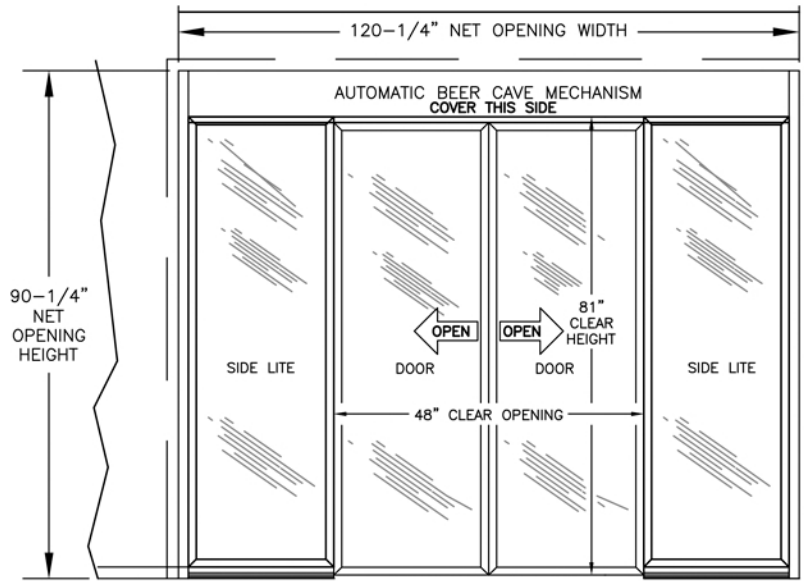
Header Motion Sensor



LCD Status Indicator



Remote Control



Double Door Slider Shown